



TRAILERS
14 & 16 TONNE



HARRY WEST (PREES) LTD
LOWER HEATH, PREES, WHITCHURCH, SHROPSHIRE
SY13 2BT

TEL: 01948 840 465 FAX: 01948 841 055

WWW.HARRYWEST.CO.UK

EMAIL: SALES@HARRYWEST.CO.UK

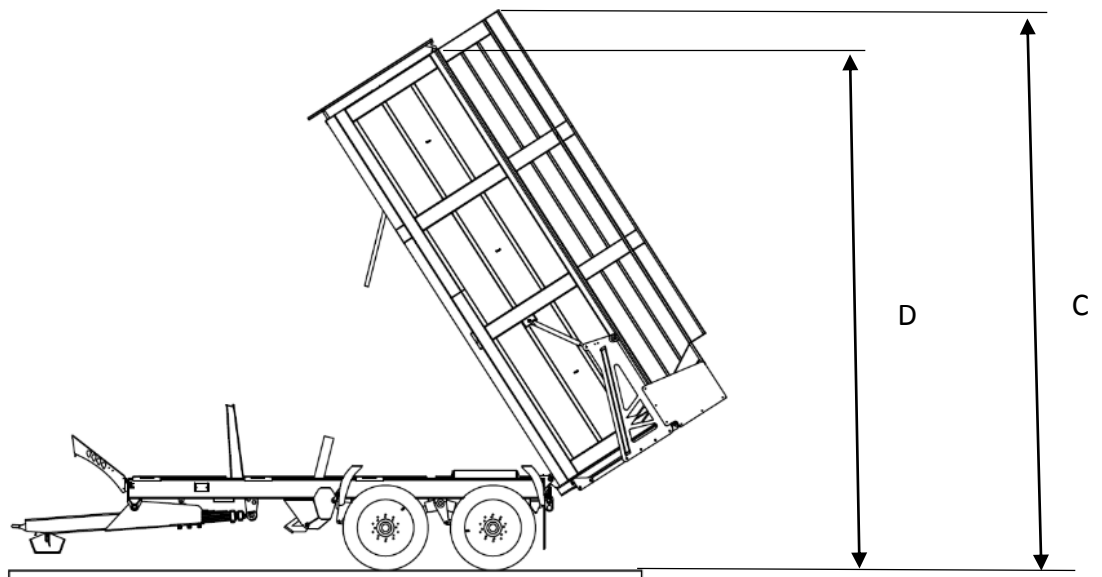
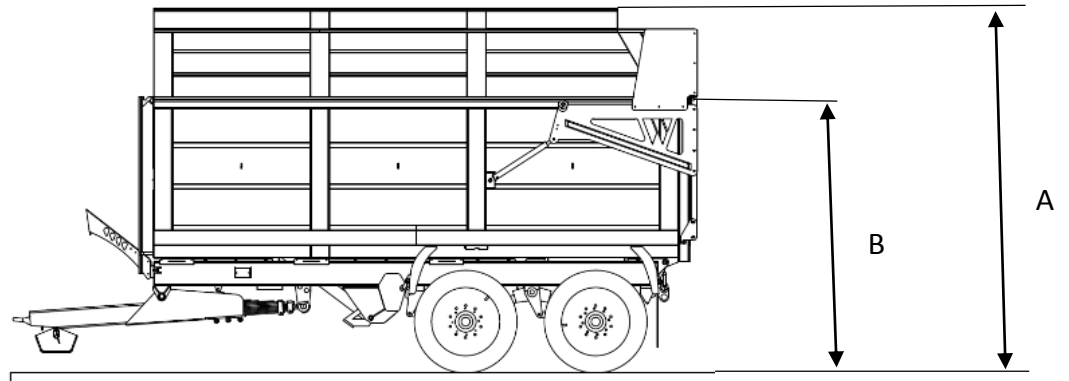
Index

1. Trailer Specification
2. Trailer Specification / Heights
3. Safety Procedures
4. Operating Instructions
5. Maintenance Specifications
6. Maintenance Specifications
7. Blank Page
8. Trailer Body Assembly List
9. Trailer Body Assembly Illustration
10. Hydraulic Body Lift Circuit List
11. Hydraulic Body Lift Circuit
12. Hydraulic Door Lift Circuit List
13. Hydraulic Door Lift Circuit
14. Standard Hydraulic Brake Circuit List
15. Standard Hydraulic Brake Circuit
16. Air Brake Circuit List
17. Air Brake Circuit
18. Hydraulic LSV & EBV Brake Circuit List
19. Hydraulic LSV & EBV Brake Circuit
20. Axle Bearing Breakdown
21. Axle Break Breakdown
22. Tandem Suspension Assembly List
23. Tandem Suspension Assembly Breakdown
24. Drawbar Assembly List
25. Drawbar Assembly Breakdown
26. Mudguard Assembly List
27. Mudguard assembly Breakdown
28. Complete Light Circuit List
29. Complete Light Circuit

TRAILER SPECIFICATION.

Standard Trailer (Capacities)	14 Tonne Tandem	16 Tonne Tandem
Internal Body Dimensions		
Width Front	2.18 m (7' 2")	
Width Rear	2.35m (7' 9")	
Length	5.6 m (18' 5")	6.36m (20' 10")
Height	1.495m (4' 10")	1.495m (4' 10")
Volume (Level Capacity)	8.7 m ³	21.3 m ³
Overall Length of Trailer	7.016 m (23')	7.766 m (25' 6")
Height of Floor from Ground	1.394 m (4'7")	1.454m (4'9")
Materials Floor	5 mm	5 mm
Sides	4 mm	4 mm
Angles of Tip	57°	53°
Hydraulic Cylinders	Two– Three Stage	Two—Three Stage
Axle Wheel Track	1.9 m (6' 3")	
Axle Beam Size	Ø127 Beam	
Brakes (Hydraulically Operated)	420 x 180 mm 421E	
Unladen Weight of Grain Trailer	5780kg	6360kg
Unladen Weight of Silage Trailer	6247kg	6887kg

Trailer Specifications



	A	B	C	D
16T	3.866m (12' 8")	2.949m (9' 8")	7.670m (25' 2")	7.113m (23' 4")
14T	3.806m (12' 6")	2.888m (9' 6")	7.086m (23' 3")	6.593m (21' 8")

Safety

- Keep all personnel clear of the machine when operating or manoeuvring.
- Do not permit anyone to ride on the machine.
- Do not overload, and tip only on level ground.
- Do not exceed speed rating of tyres, axles and braking system.
- Check that the towing tractor is suitable for the trailer gross weight. A suitable tractor will provide safe braking, stability when tipping, and sufficient power for comfortable towing.
- If body is raised for maintenance, cleaning etc, it must be securely propped.
- Check that lights are connected and working before using on the road.
- Check hydraulic hoses and air lines for chafing or damage, replace if necessary.
- Check condition of towing eye for signs of wear or damage.
- Check tyre pressure regularly and examine tyres and wheels for damage. Check also that wheel nuts are secure.
- Never tip trailer under electricity cables or doorways.
- Make a thorough check before using the trailer that all parts are secure, particularly axles, body pivots and hydraulic cylinders.
- Never travel with the body in raised position.
- Keep hydraulic couplings clean.

Before setting off:

- Ensure all hydraulic connections are made and that services are functioning correctly.
- Ensure all air connections are made and that the brakes are functioning correctly.
- Ensure all electrical connections are made and that lighting system functions correctly.
- With Air Braking system allow air pressure from the towing vehicle to build to the required level.
- Release the manual parking brake lever.
- If only using the hydraulic brakes or when shunting the trailer push the air release valve before moving off
- Ensure the trailer is fully lowered and the tailgate is closed before releasing the brake and moving away.
- It is not necessary to connect both the air and the hydraulic brake systems simultaneously.

Trailer Operating Instructions

Coupling to the Towing Vehicle Air Brake Connections

- Connect ABS electrical connector to towing vehicle ABS socket.
- Connect yellow control line braking connector to the relevant connection on the towing vehicle.
- Connect red air service line braking connector to the relevant connections on the towing vehicle.

Always connect the yellow line first when coupling and disconnect the red line first when uncoupling.

Coupling to the Towing Vehicle Hydraulic Brake Connections

- Connect the hydraulic service line to the correct connection on the towing vehicle.
- Connect emergency brake cable to towing vehicle (only on emergency brake system).
- Couple tractor and trailer on pick-up hook/ring hitch, NOT tractor drawbar.
- Connect body raise and tailgate hydraulics to towing vehicle.
- The body is raised by single acting, multi stage hydraulic cylinders.
- The brakes operate simultaneously with the tractor brakes.
- Hydraulic grain gates are operated with double-acting hydraulic cylinders.
- Before loading the trailer, check that these services function correctly.
- The trailer should be uniformly loaded at all times to maintain stability and correct draw bar loadings.
- Operators should be aware of the widely varying densities of commodities. Trailer cubic capacities relate to cereal crops.
- Tip only on firm level ground. Beware of overhead power cables. If tipping inside building ensure there is adequate height.
- Do not leave silage loaded 'overnight'. Silage and similar crops will settle if left forming a solid mass. Always unload silage while it is still free flowing.

Relieving the Residual Pressure in the Trailer Brake Hose

In normal service, a build-up of pressure may be apparent in the trailer brake hose when attempting to recouple to the tractor after the trailer has been disconnected for some time. The high pressure in the emergency accumulator can cause seepage of fluid the emergency brake valve and into the trailer brake hose, via port C. Manufacturing tolerances are such that it impossible to prevent this happening. After some time, this residual pressure can make recoupling more difficult, and it is advisable to relieve this pressure before attempting to couple up to the tractor again, especially if the trailer has been standing for more than a few days.

To relieve the residual pressure in the hose, rotate the valve spindle to the intermediate position and then pump the pressure-relief button several times. This will transfer fluid from the hose back into the accumulator through a non-return valve, lowering the residual pressure in the hose and allowing it to be recoupled to the tractor more easily.

NOTE:

This is an emergency braking device only, and must not be used as a parking brake.

Maintenance Specifications

Tyres and Wheelnuts

Every 8 hours

- Check nut torque
- Check tyre pressures

Sprung Axles Nuts

After a short period of use (2 hours)

- Check thereafter every 100 hours.

All pivot and hinge pins

- Oil every 200 hours.

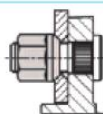
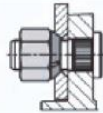
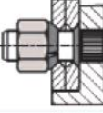
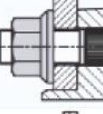
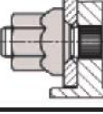
Wheel Bearings

- Grease every 400 hours.
- Adjust wheel bearings if necessary.
- Check and adjust brakes.
- Inspect drawbar ring hitch for wear.

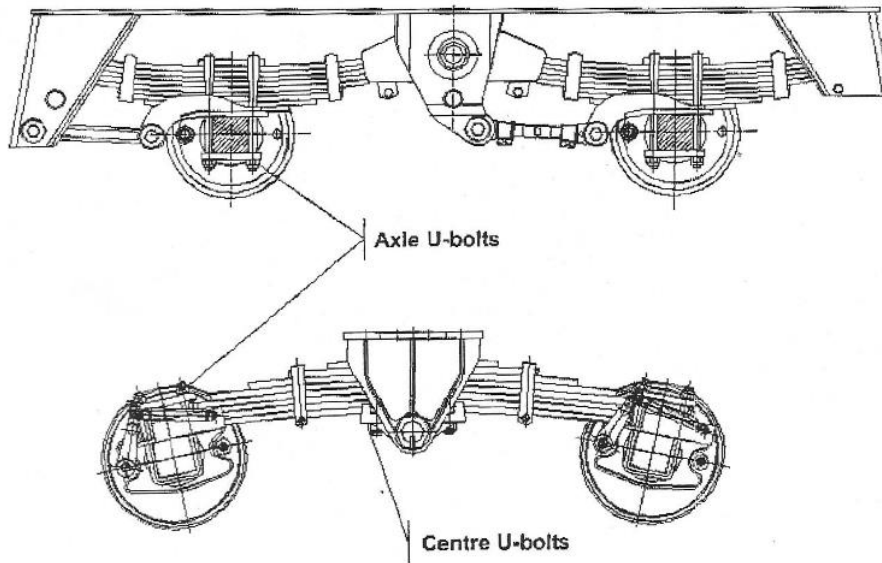
If trailer is laid up for a period of time, lubricate as above, remove drain plugs from inside of body.

Wheels, Axles and Drawbar Torques

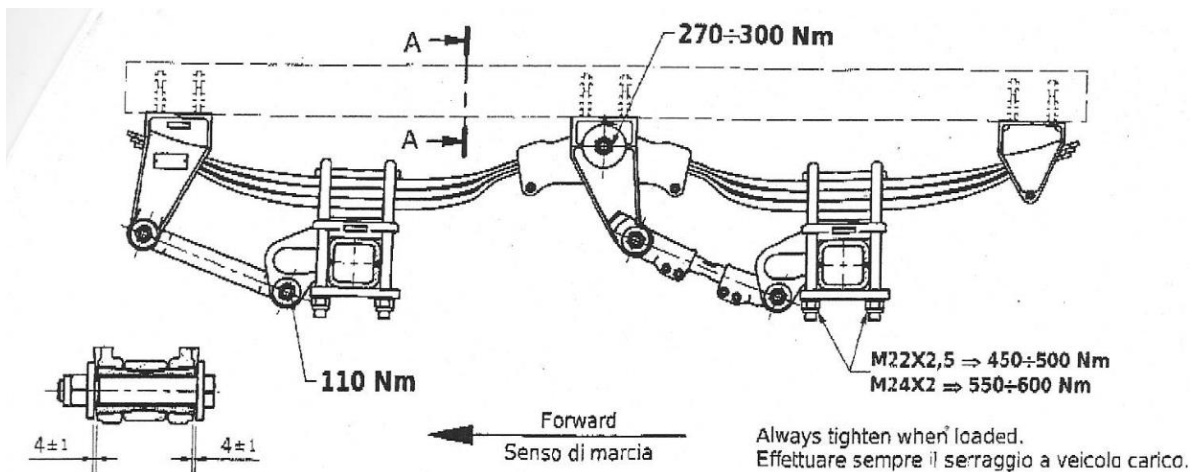
	Wheel	Sprung Axle	Drawbar
16 Tonne	See Diagram	See Diagram	1177 N/m
14 Tonne	See Diagram	See Diagram	637 N/m

NUT TYPE	Spanner	Wheel stud	Tightening torque	Leverage (*L)	Force (*F)
	mm	mm	Nm	mm	Kg
DIN 	17	M12x1.5	90	300	30
	19	M14x1.5	130	300	40
	24	M18x1.5	270	450	60
Plain nut + washer 	24	M18x1.5	270	450	60
	27	M20x1.5	380	600	60
	30	M22x1.5	510	800	60
"Twin" 	24	M18x1.5	270	450	60
	27	M20x1.5	380	600	60
	30	M22x1.5	510	800	60
"M" 	-	-	-	-	-
	27	M20x1.5	450	800	55
"Bec" 	32	M22x1.5	650	1000	65
	28	M18x1.5	270	450	60
	30	M20x1.5	380	600	60
	32	M22x1.5	510	800	60

Maintenance Specifications



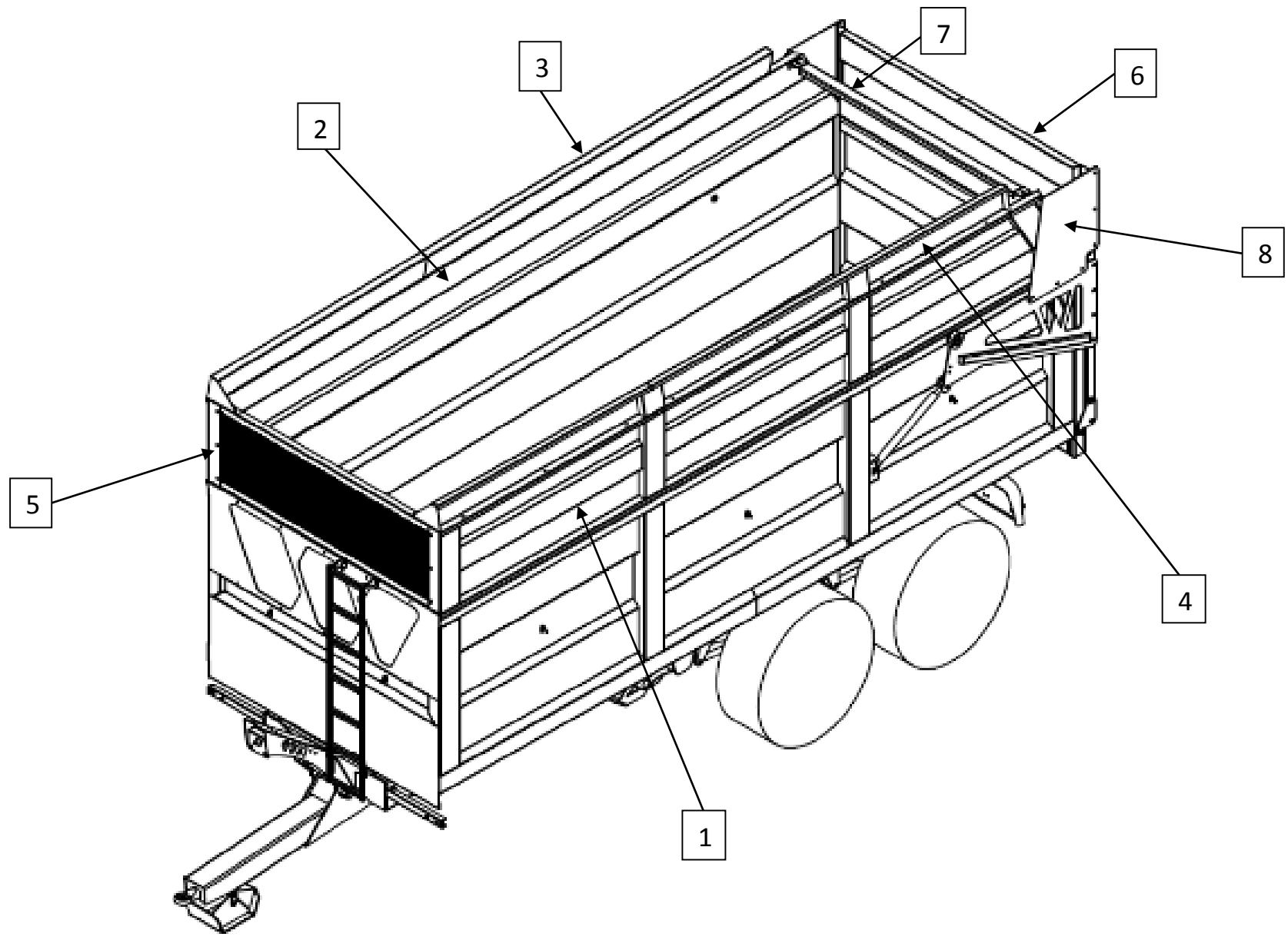
U-bolt	Torque		
mm	mKg	N/M	LB/FT
Ø18	23	225.5	166.4
Ø22	45	440.3	325.5
Ø24	50	490.3	361.7
Ø27	60	588.4	434.0



**BLANK
PAGE**

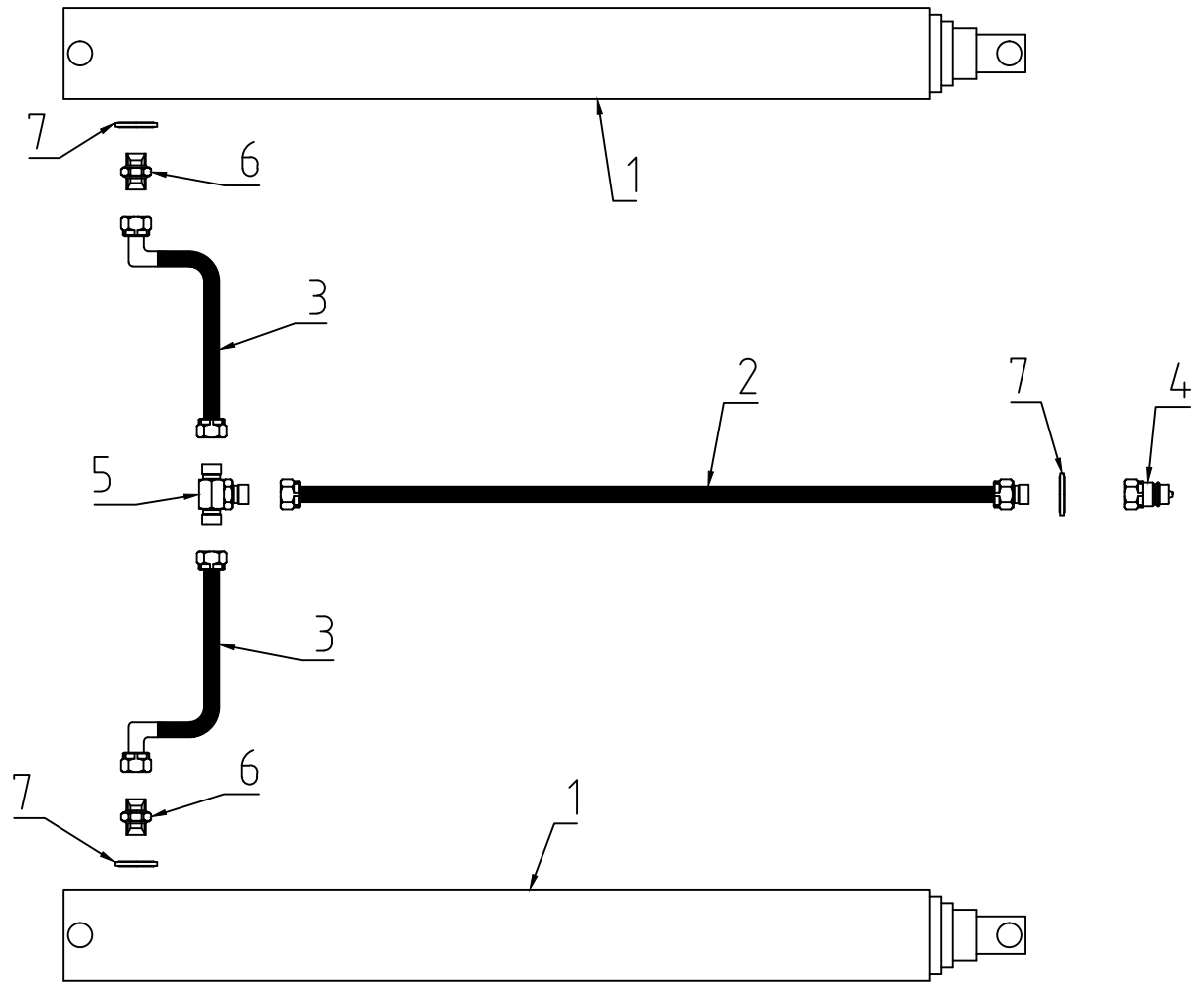
14T & 16T Silage Details

Ref	Description	Part Number		Qty.
		14T	16T	
	Silage Accessories			
1	L/H Silage Side W/A	682100	692100	1
2	R/H Silage Side W/A	682150	692150	1
3	Offside Side Load W/A	682500	692500	1
4	Nearest Side Load W/A	682510	692510	1
5	Front Silage Mesh Panel	692200	692200	1
6	Silage Door Extension	692400	692400	1
7	Tie Beam W/A	692300	692300	1
8	Connecting Plate	698003	698003	2



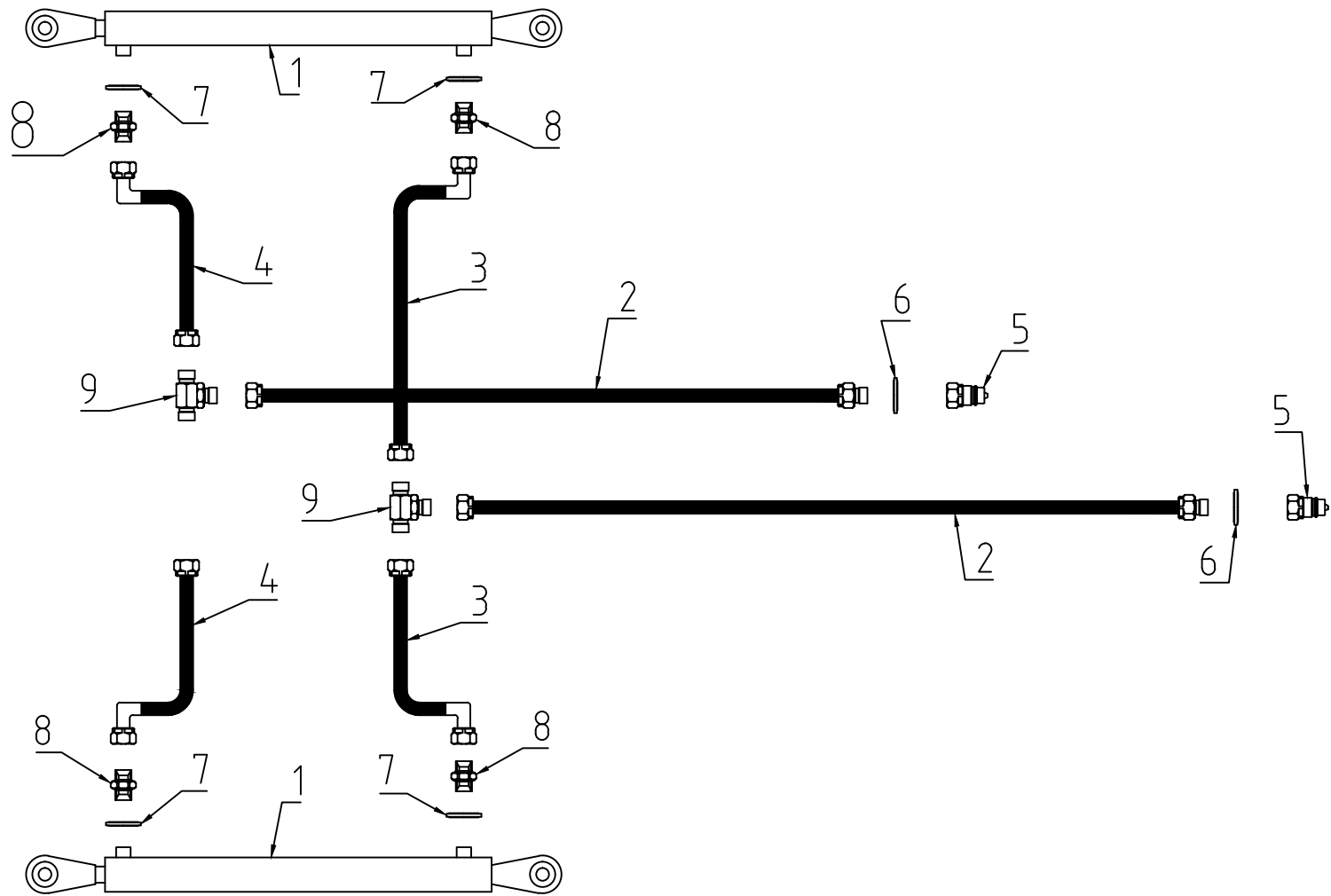
Hyd Body Lift Circuit

Ref	Description	14 T	16 T
1	3 Stage Lift Ram	699003	699003
2	Tractor – Tee Hose	14t Body Lift Tractor – Tee Hose (5.0)	16t Body Lift Tractor – Tee Hose (5.5m)
3	Tee – Cyl Hose	Body Lift Tee – Cyl Hose (0.75m)	AS 14t
4	½” M Quick Release Coupling	990201	990201
5	½” MMM Tee	990212	990212
6	½” MM Strt Adptr	990209	990209
7	½” Dowty Seal	990206	990206



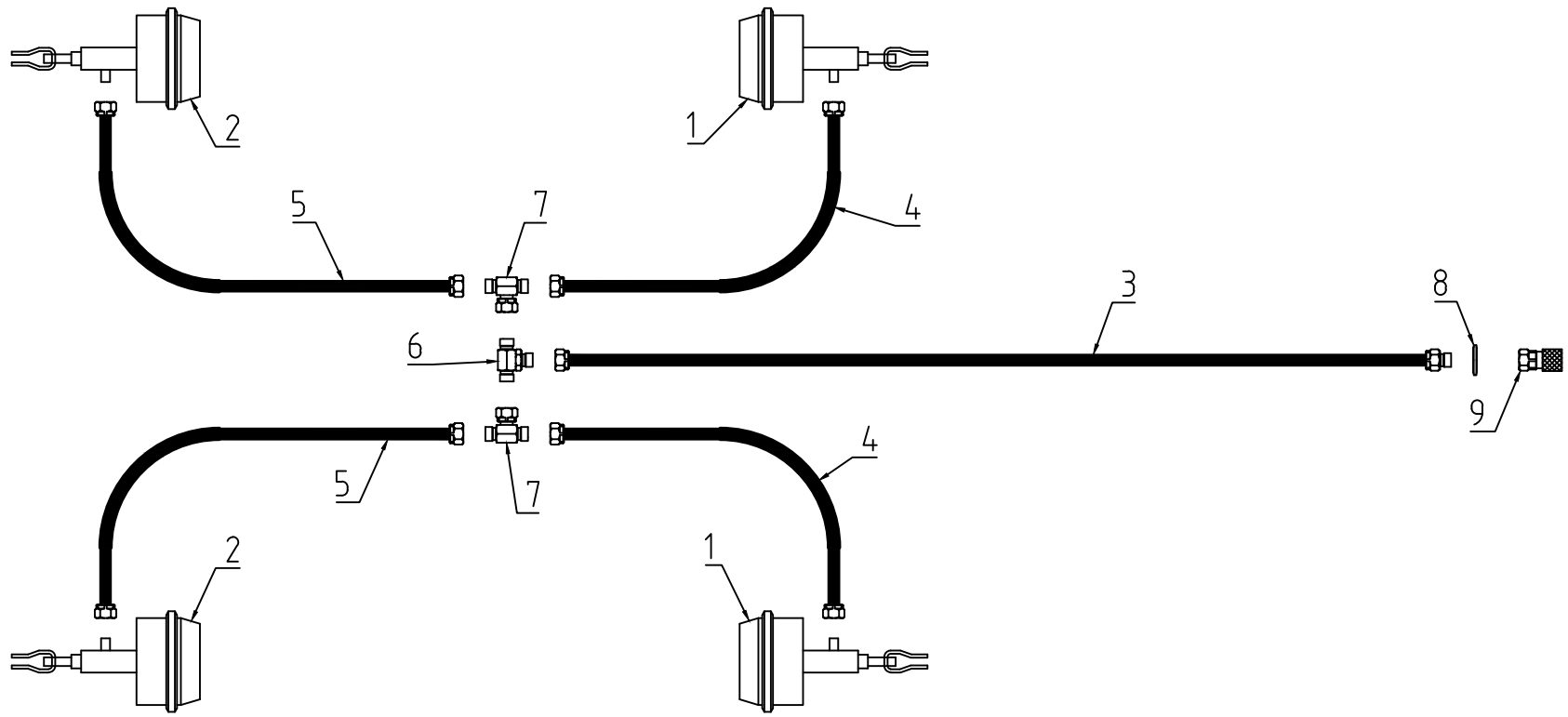
Hyd Door Lift Circuit

Ref	Description	14 T	16 T
1	Hyd Door Cyl	699006	699006
2	Tractor – Tee Hose	14t Tractor - Tee Hose(10m)	16t Tractor - Tee (10.7m)
3	Tee – Cyl Hose (long)	14t Tee – Cyl Hose (2.7m)	AS 14t
4	Tee – Cyl Hose (short)	14t Tee – Cyl Hose (2.2m)	AS 14t
5	½” M Quick Release Coupling	990201	990201
6	½” Dowty Seal	990206	990206
7	¼” Dowty Seal	990226	990226
8	¼” MM Strt Adptr	990224	990224
9	¼” MMM Tee	990213	990213



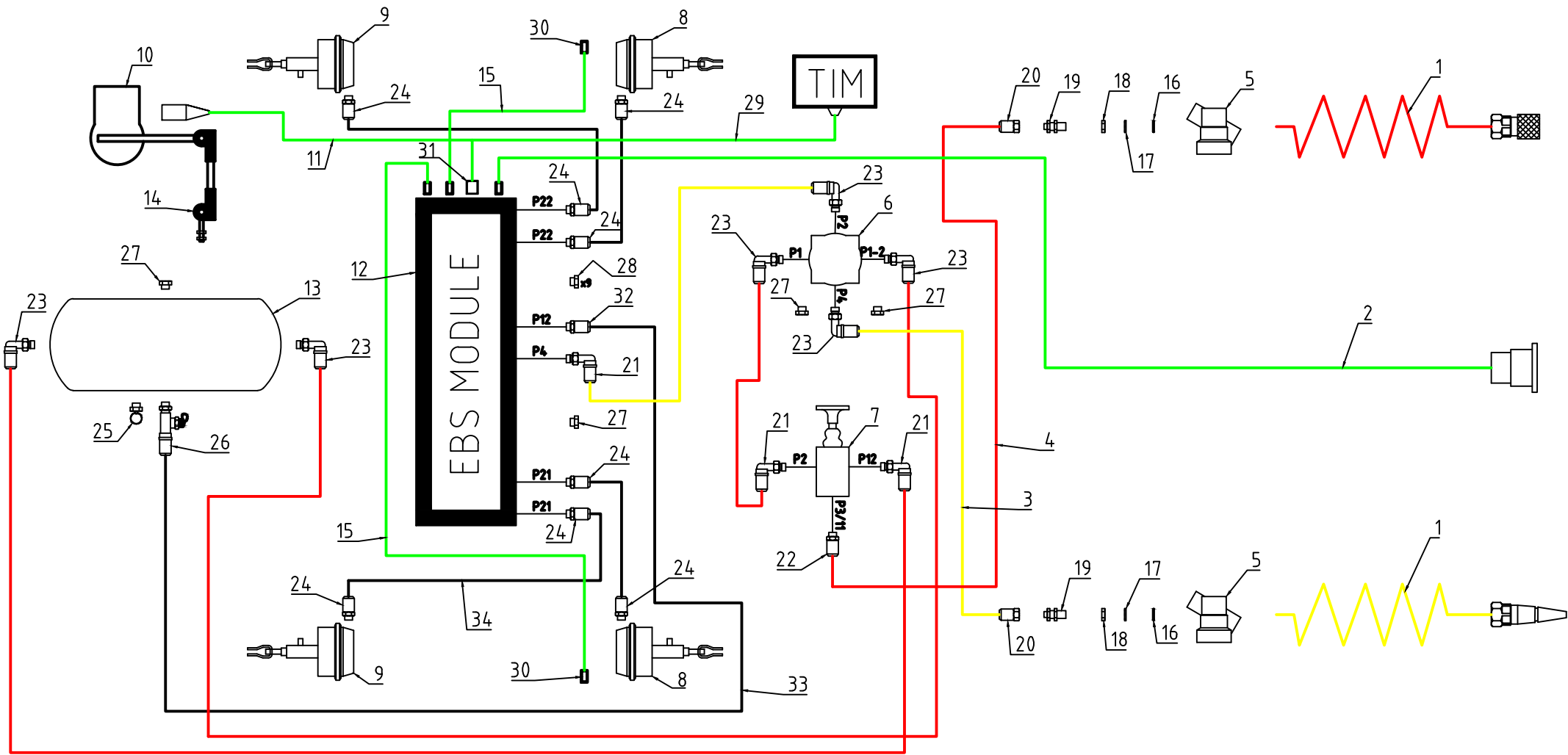
Std Hyd Brake Circuit

Ref	Description	14 T	16 T
1	Brake Actuator (slotted clevis)	699007	699007
2	Brake Actuator (std clevis)	699008	699008
3	Tractor – Tee Hose	14t Tractor – Tee Hose (7.0m)	16t Tractor – Tee Hose (7.5m)
4	Short Tee – Cyl Hose	14t Short Tee – Cyl Hose (0.7m)	AS 14t
5	Long Tee – Cyl Hose	14t Long Tee – Cyl Hose (0.9m)	AS 14t
6	3/8” MMM Tee	990211	990211
7	3/8” MMF Tee	990275	990275
8	½” Dowty Seal	990206	990206
9	½” ISO Quick Release Brake Coupling	990202	990202



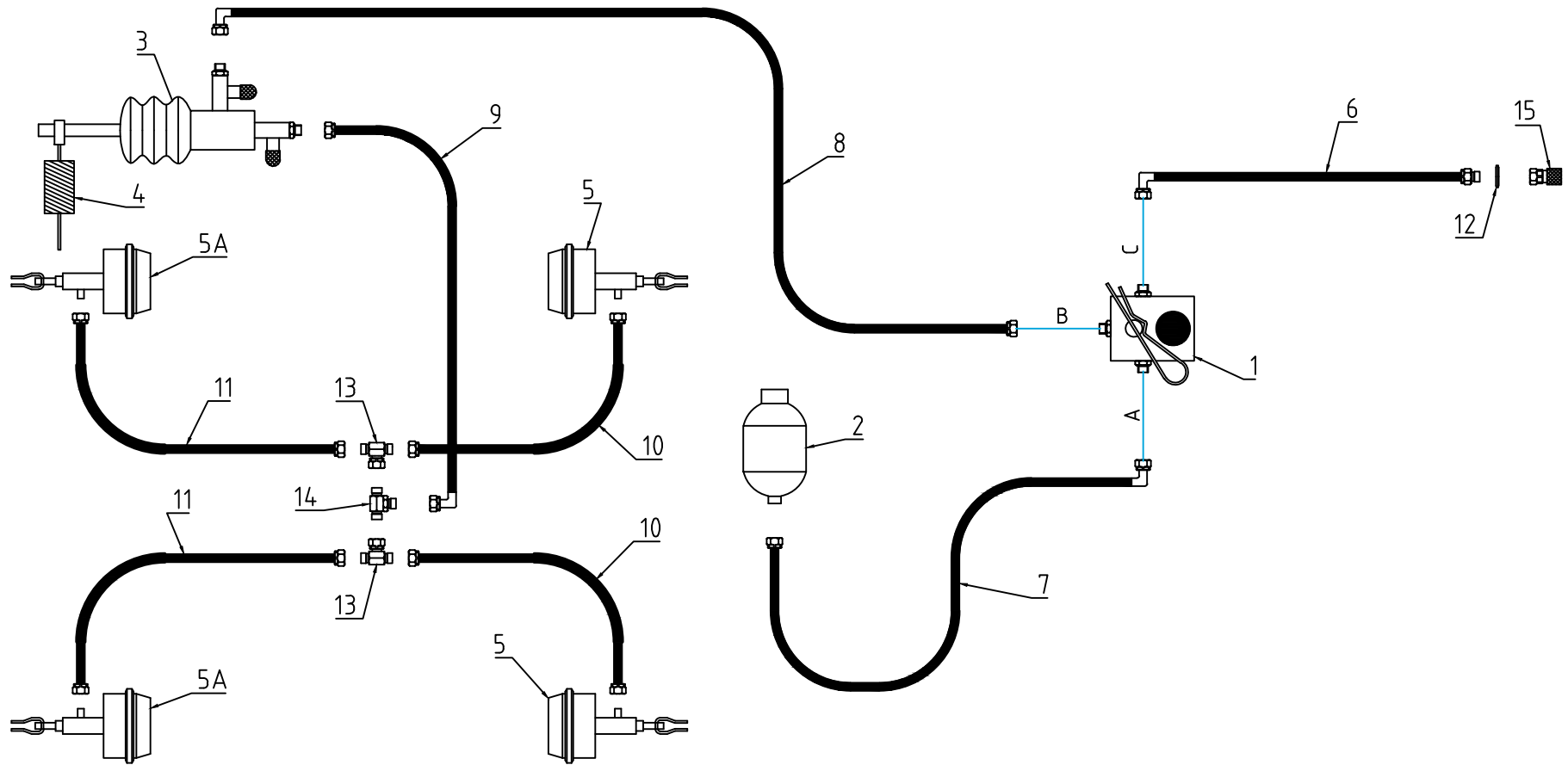
Air Brake Circuit

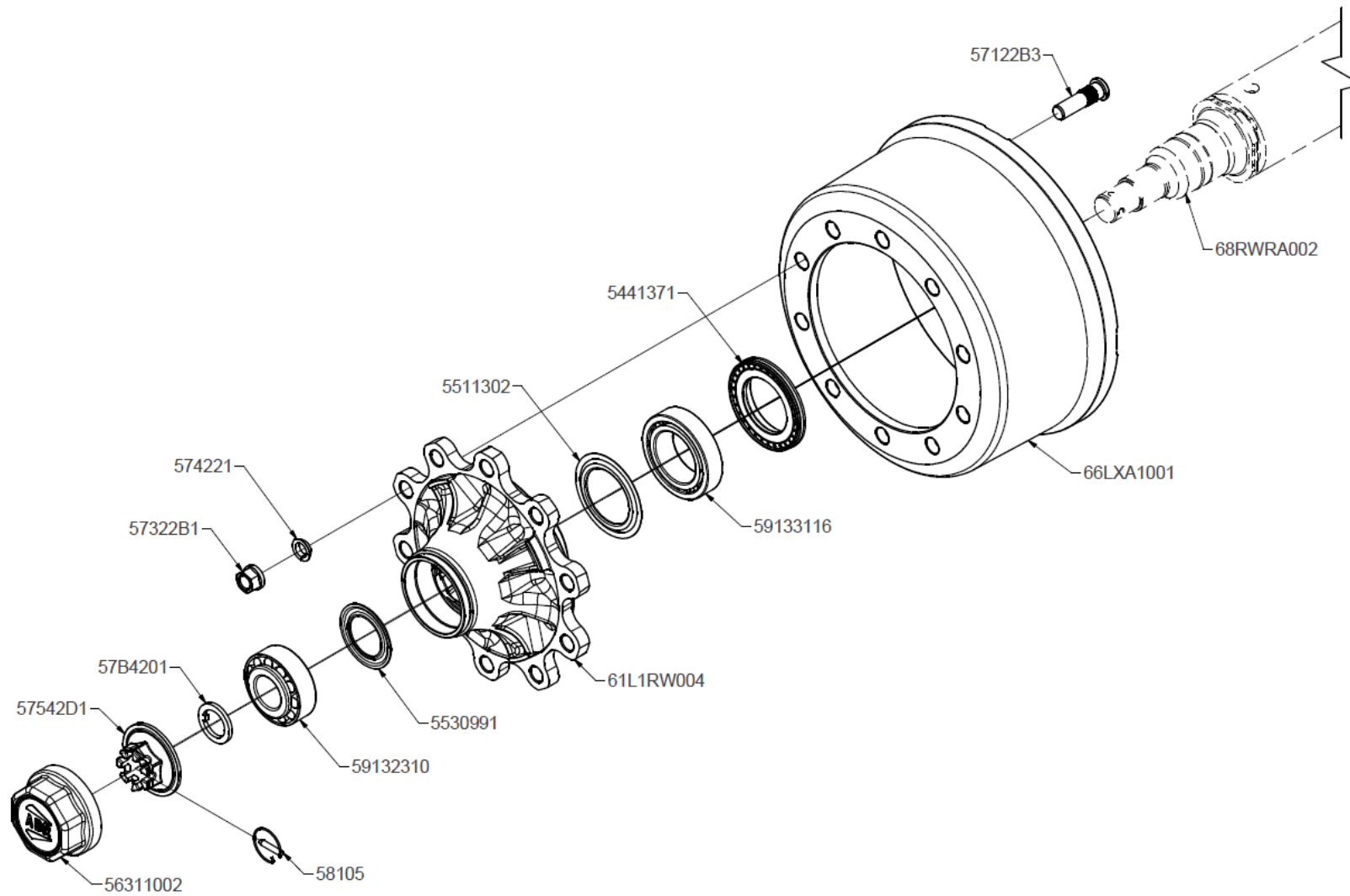
Ref	Description	14 T	16 T
1	Air Coil / Coupling Kit	ABCA1	ABCA1
2	10m ISO Cable	K008430N00	K008430N00
3	Yellow Nylon Tube	N10125Y	N10125Y
4	Red Nylon Tube	N10125R	N10125R
5	Air Filter	I99660	I99660
6	R E Valve	AS3000A	AS3000A
7	Shunt Valve	AE4261	AE4261
8	Brake Actuator (slotted clevis)	699007	699007
9	Brake Actuator (std clevis)	699008	699008
10	Mech Susp LSV	K026919B90	K026919B90
11	LSV Cable	K002277N00	K002277N00
12	G2.2 EBS Trailer Module	K055372	K055372
13	60 Ltr Reservoir	699005	699005
14	Linkage	K001406	K001406
15	Speed Sensor Extension Cable	K0278323000	K0278323000
16	'O' Ring	OR22	OR22
17	Thrust Washer	TR22	TR22
18	Locking Nut	LN22Z	LN22Z
19	Bulkhead Coupling	703516	703516
20	Female Stud M16 x 10 x 1.25mm	808416	808416
21	Male Stud Elbow M16 x 10 x 1.25mm	810416	810416
22	Male Stud M16 x 10 x 1.25mm	800416	800416
23	Male Stud Elbow M22 x 10 x 1.25mm	810422	810422
24	Male Stud M16 x 12 x 1.5mm	800516	800516
25	Tilt Tap (c/w pull ring)	TT3T	TT3T
26	Stud Run Test Point M22 x 15 x 1.5mm	823622	823622
27	Blanking Plug (Brass) M22	BP22B	BP22B
28	Blanking Plug (Brass) M16	BP16B	BP16B
29	Data Cable	KBP2153/2	KBP2153/2
30	Long Sensor and Bush	BA000216	BA000216
31	Plug Connection	K091439N00	K091439N00
32	Male Stud M22 x 15 x 1.5mm	800622	800622
33	Ø15 Black Nylon Tube	N1515BK/15	N1515BK/15
34	Ø12 Black Nylon Tube	N1215BK/15	N1215BK/15



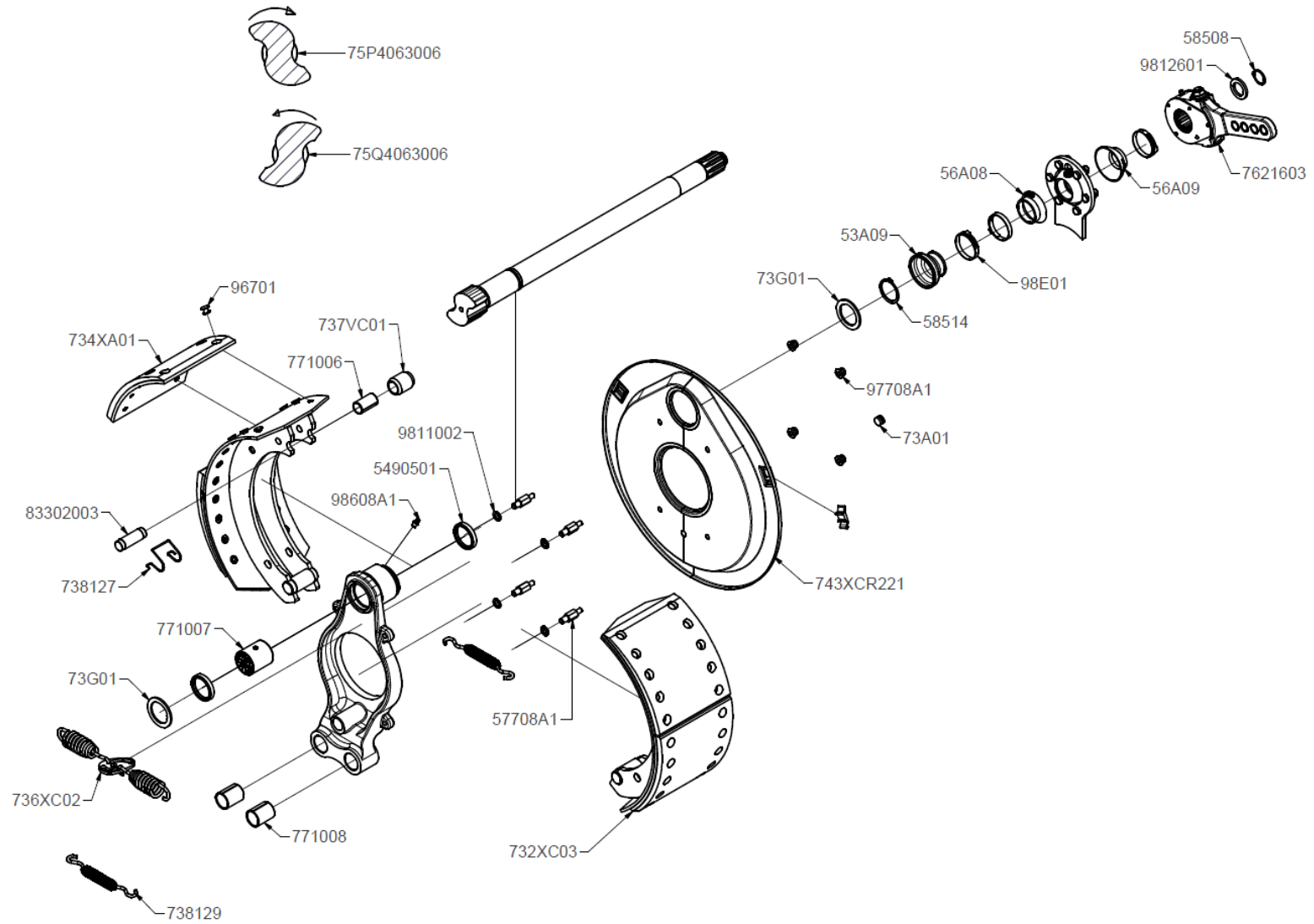
Hyd LSV & EBV Brake Circuit

Ref	Description	14 T	16 T
1	Emergency Brake Valve	EBV (ETK 001)	EBV (ETK 001)
2	Emergency Hydraulic Fluid Accumulator	EHFA (ETK 001)	EHFA (ETK 001)
3	Load Sensing Valve	LSV (ETK 007)	LSV (ETK 007)
4	Load Sensing Valve Linkage	LSV Linkage (ETK 007)	LSV Linkage (ETK 007)
5	Brake Actuator (slotted clevis)	699007	699007
5A	Brake Actuator (std clevis)	699008	699008
6	Tractor – EBV Hose	14t Tractor – EBV Hose (2.4m)	AS 14t
7	EBV – EHFA Hose	14t EBV – EHFA Hose (1.1m)	AS 14t
8	EBV – LSV Hose	14t EBV – LSV Hose (4.2m)	16t EBV – LSV Hose (4.7m)
9	LSV – Tee Hose	14t LSV – Tee Hose (0.4m)	AS 14t
10	Short Tee – Cyl Hose	14t Short Tee – Cyl Hose (0.7m)	AS 14t
11	Long Tee – Cyl Hose	14t Long Tee – Cyl Hose (0.9m)	AS 14t
12	½” Dowty Seal	990206	990206
13	3/8” MMF Tee	990275	990275
14	3/8” MMM Tee	990211	990211
15	½” ISO Quick Release Brake Coupling	990202	990202





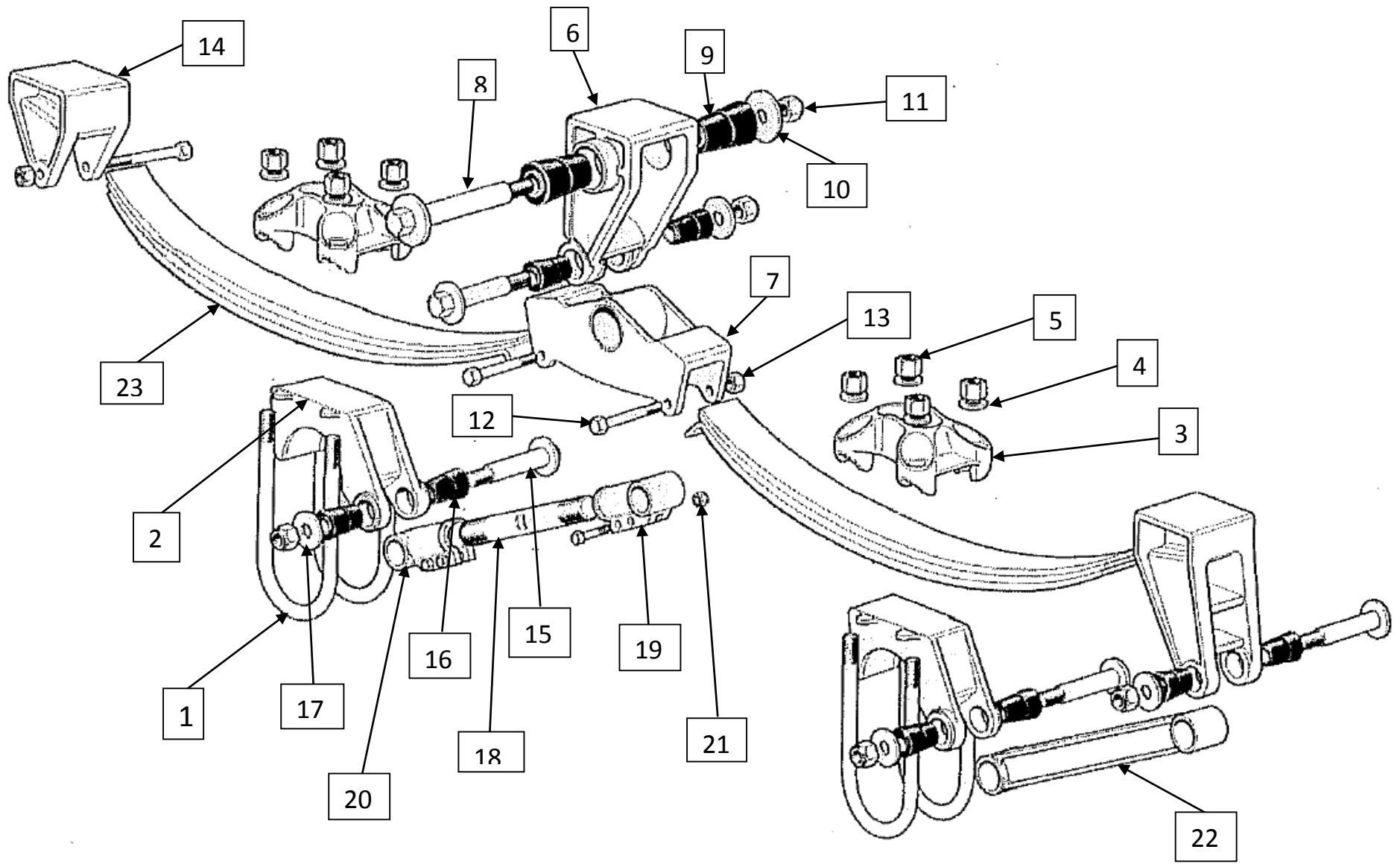
Serial Number		
	From	To
14T	680001	680020
16T	690001	690010



Serial Number		
	From	To
14T	680001	680020
16T	690001	690010

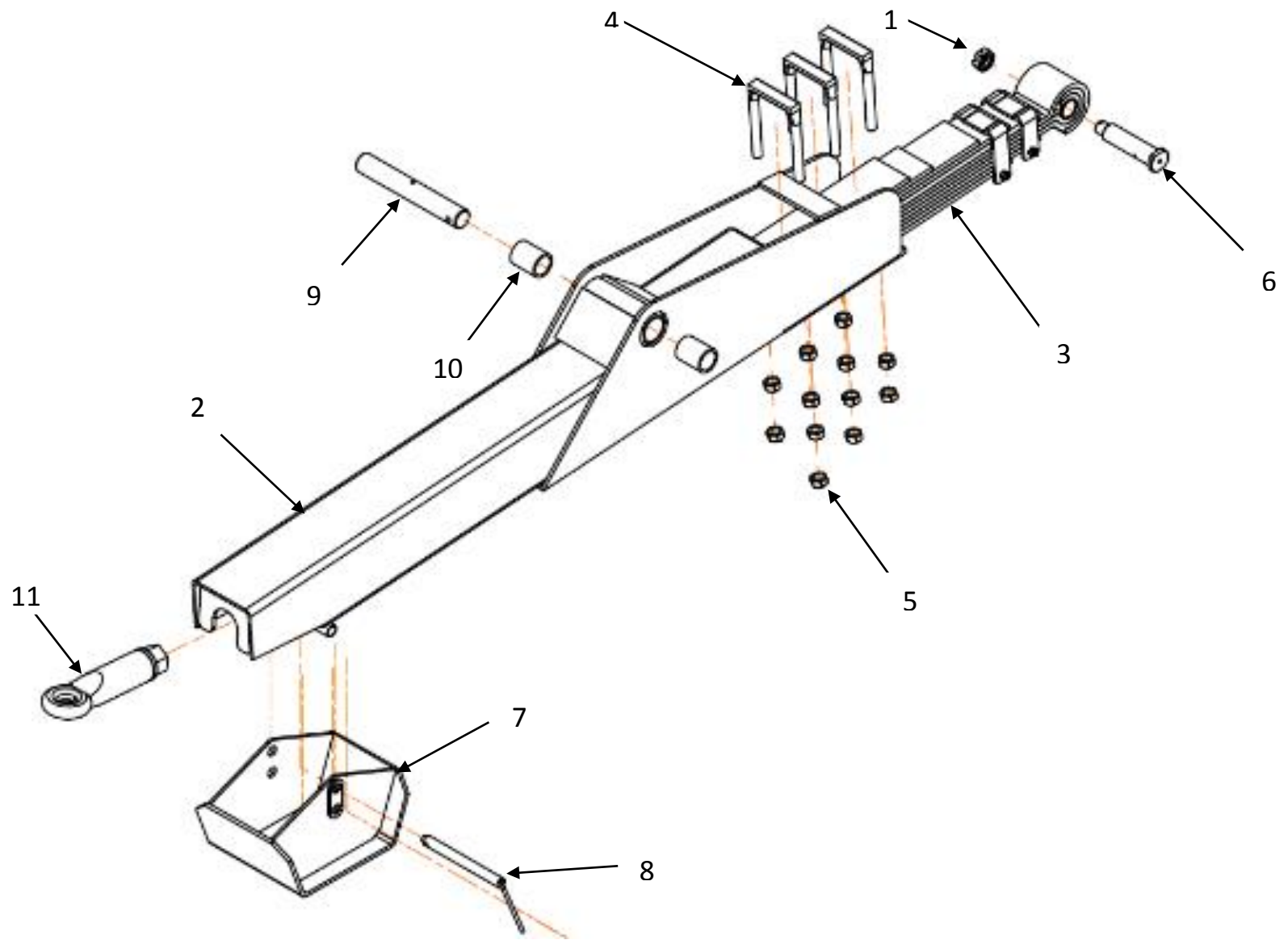
14T & 16T Tandem

Part No.	Description	14T	16T	Quantity
1	Brida Fixing Axle D = 127 M22 x 2.5 L. 250	936B5012236E	936B5012236E	2
2	Support Rod Seat Round Axle D = 127 Type Low H = 35	4377R201	4377R201	1
3	Anchorage plate bride to axle D=127	939PBT12701	939PBT12701	1
4	Washer D.23 D. 39 Sp.3.0 Uni 6592 Cat.A	915R22	915R22	4
5	Self-Locking nut M22x2.5	908DA22	908DA22	4
6	Central Support LU=152 LA=153 H=165	939SC001	939SC001	2
7	Rocker LU=336 LA=10 H=165	939BIL336	939BIL336	2
8	Pin art rocker D. 41 L. 296 M24x3 ST. 52.3	920PT04101	920PT04101	2
9	Silent Block Taper D. 70 D. 90 L. 108 Hole D. 41,6	8234101	8234101	4
10	Washer D.26 D. 100 SP. 8.0 to design	9812403	9812403	2
11	Nut M24x3 Self-Locking	97624F1	97624F1	6
12	M12x130 Bolt	914V12X130	914V12X130	5
13	Self-Locking Nut M12	908DA12	908DA12	9
14	Rear Support LU=152 LA=153 H=193	939SP01	939SP01	1
15	Pin D. 31 L. 181 M24x3 ST. 52.3	920PT03101	920PT03101	4
16	Silent Block Conical D. 46 D. 56 L. 59 Hole D. 31.5	8233201	8233201	8
17	Washer D. 26 D. 64 SP. 8.0 A Design	9812402	9812402	4
18	Threaded Rod For Biella Reg. D. 38 L. 320 M38x2	939A38320	939A38320	1
19	Head Biella Reg. Thread SX Type 01	939T01SXFR	939T01SXFR	1
20	Head Biella Reg. Thread DX Type 01	939T01DXFR	939T01DXFR	1
21	Screw T.E. M12x60 CL. 08.8 Uni 5737	914V12X60	914V12X60	4
22	Fixed Rod L. 490	939BF490	939BF490	1
23	Parabolic Leaf Spring	(1197x76 3x25) 935C86010100E	(1197x76 4x25) 935C86010300E	2



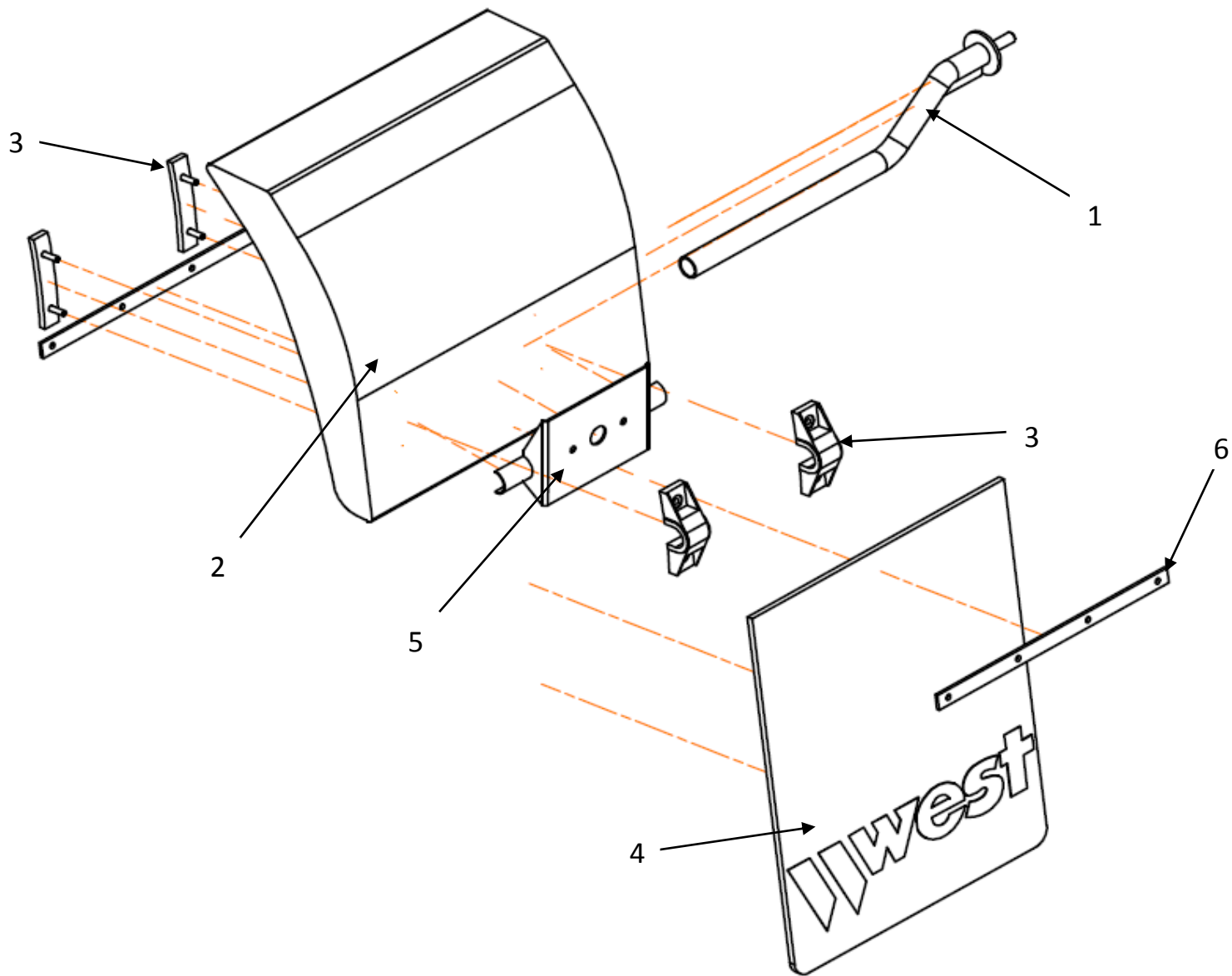
14T & 16T Drawbar Breakdown

Item	Quantity	14T	16T	Description
1	1			Castle Nut
2	1	68120200	69120200	14T Drawbar W/A
3	1	R120 P225	R120P226	Drawbar Spring
4	3	B24 S121 T215	B30 S121 T260	'U' Bolt
5	12			M24 hex nut
6	1			Spring Pin
7	1	69120900	69120900	Skid W/A
8	1	69121000	69121000	Skid Pin W/A
9	1	69023900	69023900	Drawbar Pivot Pin
10	2	10017900	10017900	Pivot Bearing
11	1	56900100	56900100	Towing Eye (Pivoting)



Mud Guard Assembly

Item	Quantity	Part No.	Description
6	2	69801200	Mud Guard Strip
5	1		LED EU200 Lamp Bracket
4	1		Mud Flap
3	2		MG Clamp Bracket Assembly
2	1		Mud Guard
1	1	69901300	



Complete Light Circuit

Ref	Description	14 T	16 T
	Complete Light Circuit	699017	699017
1	8 Core Main Chassis Cable – 9m	8P9	8P9
2	Low Profile Trailer Lamp - Right	EU200 - 6P1.2R	EU200 - 6P1.2R
3	Low Profile Trailer Lamp - Left	EU200 - 6P1.2L	EU200 - 6P1.2L
4	Number Plate Lamp	41BLM2P	41BLM2P
5	Marker Lamps c/w Plugs	181AME2P	181AME2P
6	Front Marker Lamp	37WM2P	37WM2P
7	Twin Core T- Piece	2PTP	2PTP
8	7 Pin Connector	8PTP	8PTP
9	Twin Core Marker Lamp Cable - 2m	2C200B	2C200B
10	Twin Core Marker Lamp Cable - 3m	2C300B	2C300B
11	Twin Core Marker Lamp Cable - 4m	2C400B	2C400B
12	Twin Core Marker Lamp Cable - 1m	2C100B	2C100B

