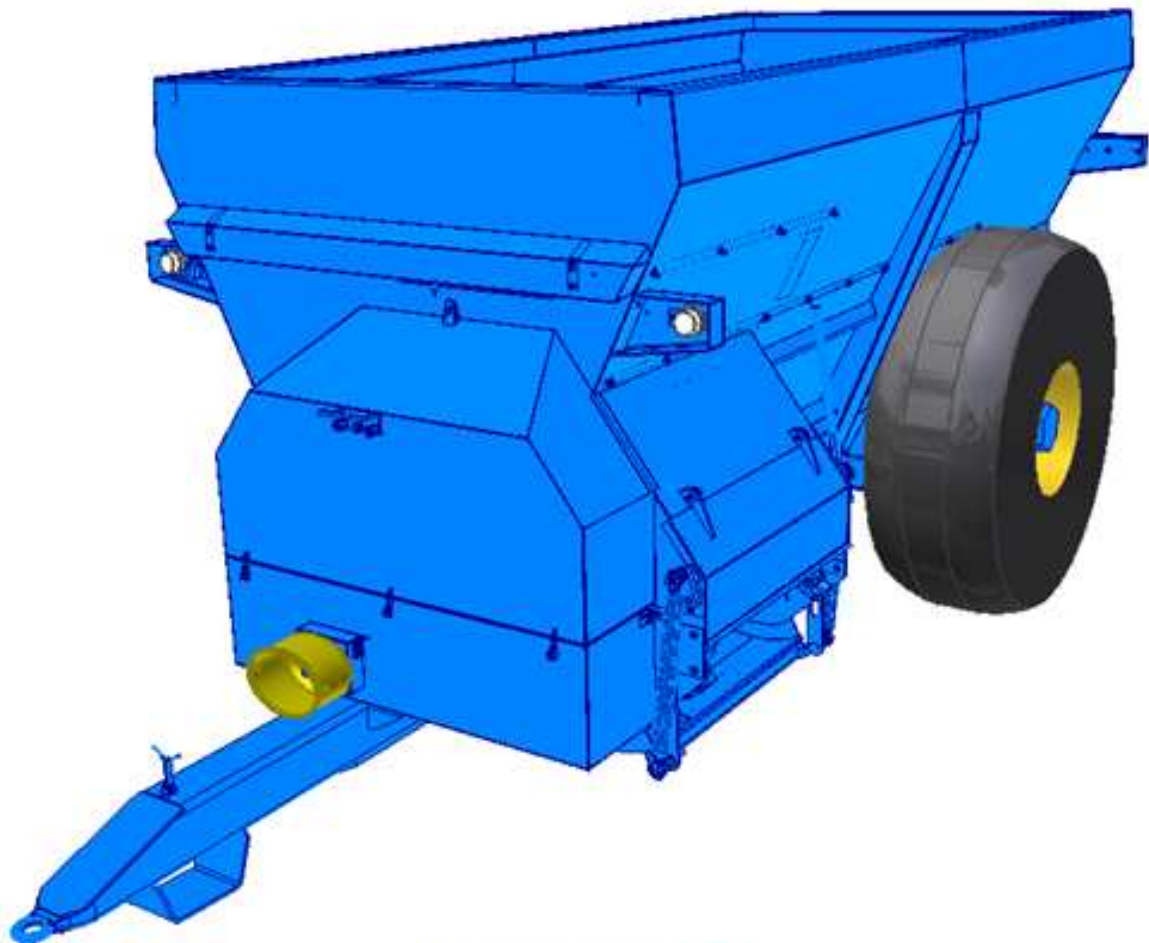




Dual Spreader

Models 1300, 1600, 2000, 3000



Harry West (Prees) Ltd

Lower Heath, Prees, Whitchurch, Shropshire SY13 2BT

Tel: 01948 840 465 Fax: 01948 841 055

www.harrywest.co.uk Email: sales@harrywest.co.uk

INDEX

1. Machinery Specifications
2. Safety Procedures
3. Maintenance
4. Operating Instructions
5. Tyre Pressures, Bolt Torque's
6. Anti-Splash Attachments
7. Front Drive Assembly Illustration
8. Front Drive Assembly List
9. Auger Assembly Illustration
10. Auger Assembly List
11. Feed Out Rotor Assembly Illustration
12. Feed Out Rotor Assembly List
13. Cam Arm & Moving Wall Assembly Illustration
14. Cam Arm & Moving Wall Assembly List
15. Rotor Cover & Tray Assembly Illustration
16. Rotor Cover & Tray Assembly List
17. Rear Plate & Bearing Assembly Illustration
18. Rear Plate & Bearing Assembly List
19. Door, Door Cylinder & Door Track Assembly Illustration
20. Door, Door Cylinder & Door Track Assembly List
21. Door Cylinder Assembly Illustration
22. Door Cylinder Assembly List
23. Tray Tensioned Lever Assembly Illustration
24. Tray Tensioned Lever Assembly List
25. Door Indicator Assembly Illustration
26. Door Indicator Assembly List
27. Hydraulics Layout Illustration
28. Hydraulics List
29. 1300, 1600 & 2000 Lights Illustration
30. 1300, 1600 & 2000 Lights List
31. 3000 Lights Illustration
32. 3000 Lights List
33. 1300/1600 Axle Assembly Illustration
34. 1300/1600 Axle Assembly List
35. 2000 Axle Assembly Illustration
36. 2000 Axle Assembly List
37. 3000 Axle Assembly Illustration
38. 3000 Axle Assembly List
39. PTO Drive Shaft Illustration

SPECIFICATION – METRIC

	MODEL 1300	MODEL 1600	MODEL 2000	MODEL 3000
Tyre Size	18.4 x 26 x 12 ply	23.1 x 26 x 14 ply	23.1 x 26 x 16 ply	650/65-30.5 x 16 ply
Tyre Pressure – bars	2.6	2.3	2.6	2.2
Overall Height – metres	2.12	2.22	2.35	2.85
Overall Width	2.42	2.64	2.64	2.9
Overall Length	4.70	5.49	5.66	6.34
Level Volume – Litres	5910	7274	9092	13638
Unladen Weight – tonnes	3.04	3.40	3.84	4.96
Gross Weight – tonnes	8.933	10.653	12.905	18.558
P.T.O. Speed – r.p.m	540	540	540	540
Min. Tractor – h.p.	70	80	80	110
Axle Beam – mm.sq.	90	90	100	150
Auger Dia – metres	0.74	0.74	0.74	0.74
Auger Speed – r.p.m	10.8	10.8	11.2	11.2
Feed Out Rota Dia. – metres	0.63	0.63	0.63	0.614
Feed Out Rotor – r.p.m	508	508	508	508
Hydraulic Pressure	← 170 bars max →			

SPECIFICATION – IMPERIAL

	MODEL 1300	MODEL 1600	MODEL 2000	MODEL 3000
Tyre Size	18.4 x 26 x 12 ply	23.1 x 26 x 14 ply	23.1 x 26 x 16 ply	650/65-30.5 x 16 ply
Tyre Pressure – p.s.i	38	34	38	32
Overall height	6'11"	7'3"	7'9"	9'4"
Overall width	7'11"	8'8"	8'8"	9'6"
Overall Length	15'5"	18'0"	18'7"	20'9"
Level Volume – Gallons	1300	1600	2000	3000
P.T.O. Speed – r.p.m	540	540	540	540
Min. Tractor – kw	52	60	67	82
Axle Beam – sq. in.	3-5"	3-5"	4"	6"
Auger Dia – ins	29"	29"	29"	29"
Auger Speed – r.p.m.	10.8	10.8	11.2	11.2
Feed Out Rotor Dia – ins	2'10"	2'10"	2'10"	2'
Feed Out Rotor – r.p.m	508	508	508	508
Hydraulic Pressure	← 2500 lb/in ² →			

SAFE STOP PROCEDURE

- Make sure handbrake is fully applied.
- Make sure all controls and equipment is left safe.
- Stop the engine.
- Remove the key.

Always use SAFE STOP:

- Before leaving your seat; or
- When anyone else approaches; or
- When anyone else is working on the machine.

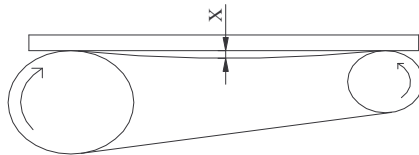
You need to take extra precautions when safe stop is not possible.

SAFETY

1. Keep all personnel clear of machine when spreading or manoeuvring
2. Do not permit anyone to ride on machine.
3. Never enter machine to clear blockages unless the SAFE STOP PROCEDURE has been followed and P.T.O. drive shaft disconnected at the tractor end before carrying out adjustments, inspections or service.
4. Always disconnect the P.T.O drive shaft at the tractor end before carrying out adjustments, inspections or service.
5. In use keep all guards in place, they are for your protection and ensure that the P.T.O shaft guard chains are secure.
6. P.T.O Drive Shaft – check there is a minimum overlap of 150mm of the lemon section tubes and that these tubes do not bottom on full lock. Should the tubes need shortening cut equal amounts from each tube and the plastic guard tubes.
7. Check tractor is large enough to control the machine in all conditions, do not overload the spreader.
8. Check hydraulic circuits functioning, especially the brakes. Hoses need to be checked periodically for excessive cracking or damage that may compromise their functionality. Always ensure SAFE STOP PROCEDURE is in place.
9. Foreign bodies in manure – the machine can throw stones or other objects a great distance. Ensure the machine is kept well clear of people, roads and buildings.
10. Rotor tips and channels – check for wear and damage. Replace as necessary.
11. Disengage P.T.O clutch when turning sharp corners.
12. Operation of lights must be checked periodically.
13. The driver must not exceed 20mph while towing this machine.
14. Care must be taken when traversing across any land with an incline of greater than 5 degrees, as there is a danger of the vehicle overturning.
15. Tyre pressure must be maintained for safe use of machinery.

MAINTENANCE

- P.T.O. Shaft
Every 8 operating hours lubricate with quality grease. Clean and grease the P.T.O drive shaft before each prolonged period of non-use. Grease the plastic guard tubes in winter to prevent freezing. **Note! `Safe Stop` and disengage PTO.**
- Feed out Rotor, PTO drive and Layshaft Bearings
Every 8 operating hours lubricate with Morris Multi Purpose EP Grease or equivalent. **Note! `Safe Stop` and disengage PTO.**
- Check tyre pressures and wheel nuts every 8 operating hours. **Note! `Safe Stop` and disengage PTO.**
- Main Auger Bearings
Every 8 operating hours lubricate with Morris Multi Purpose EP Grease or equivalent. **Note! `Safe Stop` and disengage PTO.**
- Tray Tension Bushes (under Rotor Lever)
Every 20 operating hours lubricate with Morris Multi Purpose EP Grease or equivalent. **Note! `Safe Stop` and disengage PTO.**
- Recommended slackness in chains should be measured as illustrated, with a measurement of 6mm – 12mm. To obtain a full life for each chain, regular tensioning is required. **Note! `Safe Stop` and disengage PTO.**



- lubricate with Oil every 200 hours
 - (a) Drive chains, and check adjustment, **Note! `Safe Stop` and disengage PTO.**
 - (b) Guard hinges, stone trap pivots, tray pivots, rotor cover hinges, moving wall pivot, and door cylinder and brake cylinder pivot points. **Note! `Safe Stop` and disengage PTO.**
- Annually remove hub caps from axles and fill with Morris Multi Purpose EP Grease or equivalent, lightly oil brake lever shaft. **Note! `Safe Stop` and disengage PTO.**
- Hoses must be checked periodically for excessive cracking or damage that may compromise their functionality. Any maintenance on the hydraulics must not be carried out unless the vehicle is isolated appropriately.
- Operation of the lights must be checked periodically.
- When replacing the bearings in axle hubs, they must be torqued up until they start to drag, then released to the nearest slot on the castle nut.

Note: - R.H.P. type bearings should only be greased with 1 or 2 pumps of grease gun. Excessive greasing will force out the seals.

If machine is laid up for a period of time, carry out greasing and lubrication
. i.e. pour waste oil between body and moving wall to combat corrosion.

OPERATING INSTRUCTIONS

1. Couple tractor/dual spreader on ring hitch.
* Fit P.T.O. shaft with shear coupling at machine end. Check shear bolt is 12.9 grade.
Should P.T.O shaft be too long, refer to manufacturers instruction leaflet for shortening.
2. The sliding door is operated with a double acting hydraulic cylinder and a 2-way valve is required on the tractor. The brakes are operated simultaneously with the tractor brakes. Before operating the machine check these two services are operational.
3. Check maintenance for any loose bolts or parts before starting machine. **Note! `Safe Stop` and disengage PTO.**
4. The P.T.O. shaft is normally shipped inside the body of the machine behind the stone trap door.
5. The tray tension mechanism is in its working position when the handle is fully raised. In its lowered position the tray is dropped and the rotor door (over the rotor) may be raised to clear blockages. Never use the machine with the handle in the lowered position.

Loading Manure

Close sliding door fully. For yard manure, which does not easily break up, it is recommended that it be broken up with the loader before being loaded into machine. Spreading will be consistent and fast, providing the above is complied with.

Loading Silage

Fill to only two-thirds full and level from front to back. Fully close sliding door when starting. Feed out at low r.p.m.

Spreading Manure

Open sliding door a minimum of halfway. Engage P.T.O at low tractor engine revs and immediately increase revs to 540 at the P.T.O. Drive tractor forward at required speed and adjust sliding door position to give required spread.

Spreading Slurry

Again engage P.T.O at low tractor engine revs, increase to 540rpm and open sliding door 2" to 3 " depending on the consistency of the slurry and the application rate required.

General

Should the machine have variable feed out, operate the sliding door which will eliminate any bridging and return door to previous opening, but never close sliding door while the machine is running. Excessive noises should be investigated and any stones or foreign bodies removed from inside the stone trap or underfeed out rotor. **Note! `Safe Stop` and disengage PTO.**

Do not permit string or black plastic to get wound around the auger or feed out rotor shafts, remove this regularly as it can impose high loads on the bearings and increase the power required to drive the machine. **Note! `Safe Stop` and disengage PTO.**

Shear bolts

Shear bolts are located in the PTO drive shaft. Spare shear bolts are fitted at the bottom of the front guard.

In the event of shear bolt breakage, normally caused through stones or other objects, **Note! `Safe Stop`** disconnect P.T.O shaft and replace shear pin. Unlock stone trap door and clear any stones. Drop tray under rotor and check for obstruction.

Tray under Rotor

Any build up of manure on the rotor tray should be removed. **Note! `Safe Stop` and disengage PTO.** The tray is spring loaded and adjustable. The correct gap between the rotor tips and the tray is 3 to 4 mm (1/8"). Note when the tray is dropped there should be no gap between the coils of the springs. Gaps indicate that the springs are too weak and an irregular spread pattern will result.

Auger Spring Plates

Four spring plates are fitted to the front of the auger, these plates extend to the full diameter of the auger. These plates transfer manure sideways into the feed out rotor and should they become damaged or bent, must be replaced or an irregular spread will result. Before attempting to replace plates **Note! `Safe Stop` and disengage PTO.**

Agitator

A flat agitator plate is fitted to the R.H. sidewall of the body, this plate is moved up and down by a connecting rod and cam at the front of the auger. This plate feeds manure down to the auger and prevents bridging. It is possible for this plate to freeze to the body wall and this should be freed off prior to use. **Note! `Safe Stop` and disengage PTO.** Bridging can also be dislodged by moving the door forwards and backward, which engages the channels on the door against the material.

Stone Trap

Check stone trap regularly and remove stones, check for stones under auger and between auger and feed out rotor. **Note! `Safe Stop` and disengage PTO.**

Feed out Rotor Tips

Regularly check for wear and when necessary, hard weld to make up for wear and replace any damaged parts on rotor. **Note! `Safe Stop` and disengage PTO.**

Tyre Pressures

<u>Model</u>	<u>Tyre Size</u>	<u>Bars</u>	<u>P.S.I</u>
1300	18.4 x 26 x 12 ply	2.6	38
1600	23.1 x 26 x 14 ply	2.3	33
2000	23.1 x 26 x 16 ply	2.6	38
3000	650/65-30.5 x 16 ply	2.2	32

Bolt Torques

<u>Bolt Torque</u>	<u>Data</u>	<u>Black Bolts</u>	<u>Plated nuts</u>	
		N/m.	Kg/m	Lbs./ft
M8	Grade 12.9	46.4	4.75	35
M8	Grade 8.8	28	2.9	21
M10	Grade 8.8	56	5.74	42
M12	Grade 8.8	98	10.0	72
M16	Grade 8.8	244	25.0	180
M20	Grade 8.8	476	48.0	352
M22 (wheel)	Grade	370	38	273

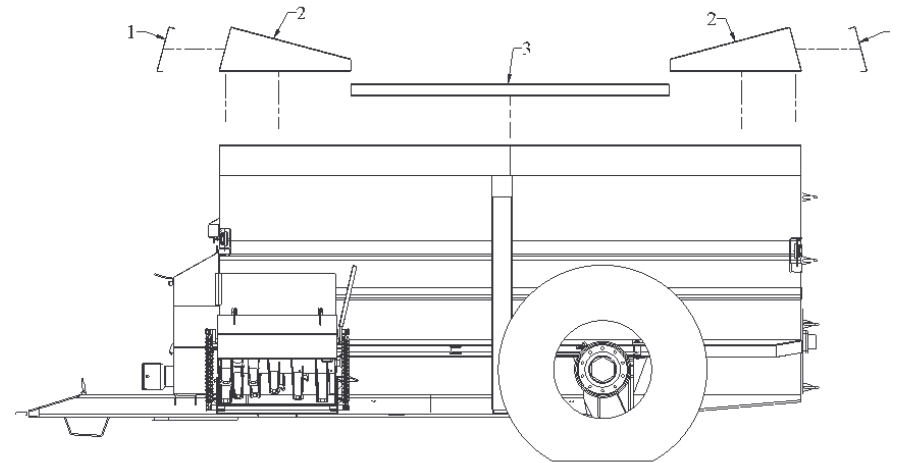
Wheels, Axles and Drawbar Torques

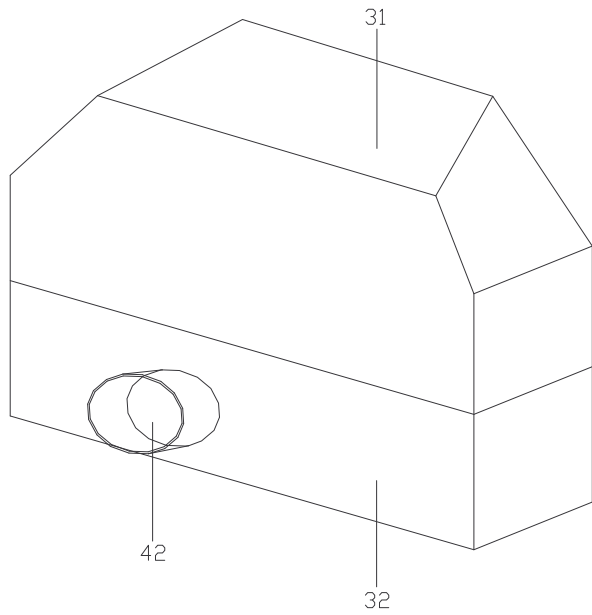
	Wheel	Sprung Axle	Drawbar
1300	360 N/m	-	-
1600	360 N/m	-	-
2000	360 N/m	-	-
3000	360 N/m	-	-

DUAL ALL MODELS

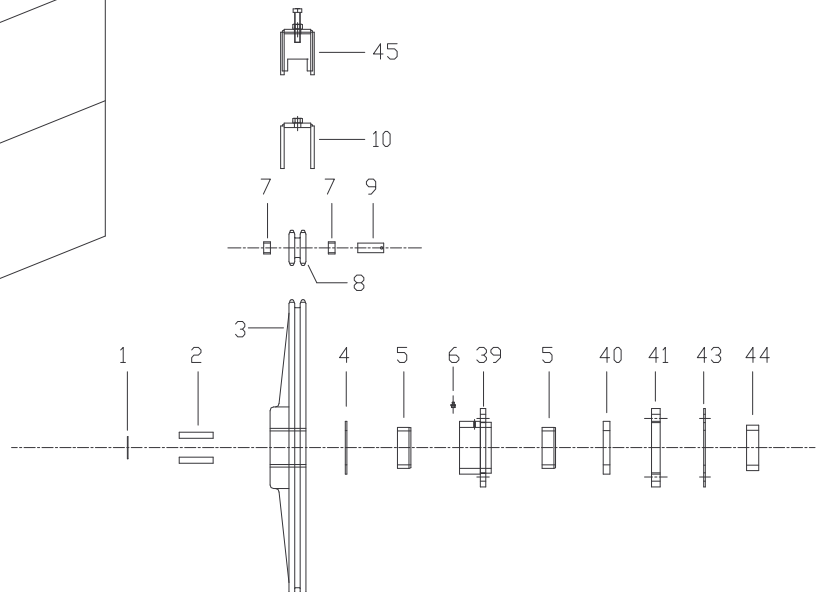
ANTI-SPLASH ATTACHMENT

<u>REF.</u>	<u>PART No.</u>	<u>DESCRIPTION</u>	<u>QTY.</u>
	131600	1300 & 1600 Splash Guard Assy	
1	131104	Front & Rear Pressing 1300 & 1600	2
2	201602	Side Pressing LH	2
2	201605	Side Pressing RH	2
	201600	2000 Splash Guard Assy	
1	201601	Front & Rear Pressing 2000	2
2	201602	Side Pressing LH	2
2	201605	Side Pressing RH	2
	571600	3000 Splash Guard Assy	
1	571601	End Pressing	2
2	571610	Side Pressing	2
2	571620	Side Pressing	2
3	571630	Mid Pressing	2
	132000	1 Decal Kit 1300	
	160400	1 Decal Kit 1600	
	202000	1 Decal Kit 2000	
	572000	1 Decal Kit 3000	

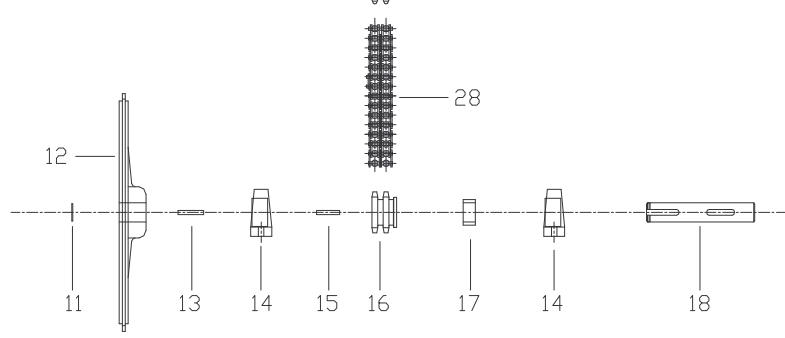




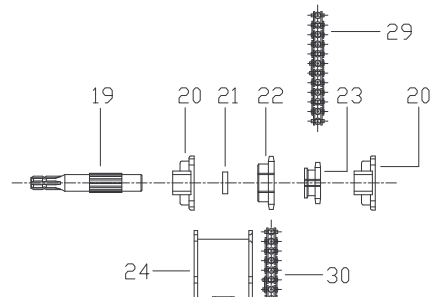
AUGER DRIVE



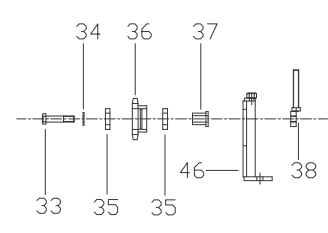
SECONDARY DRIVE



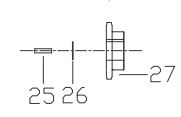
PTO DRIVE



TENSIONER



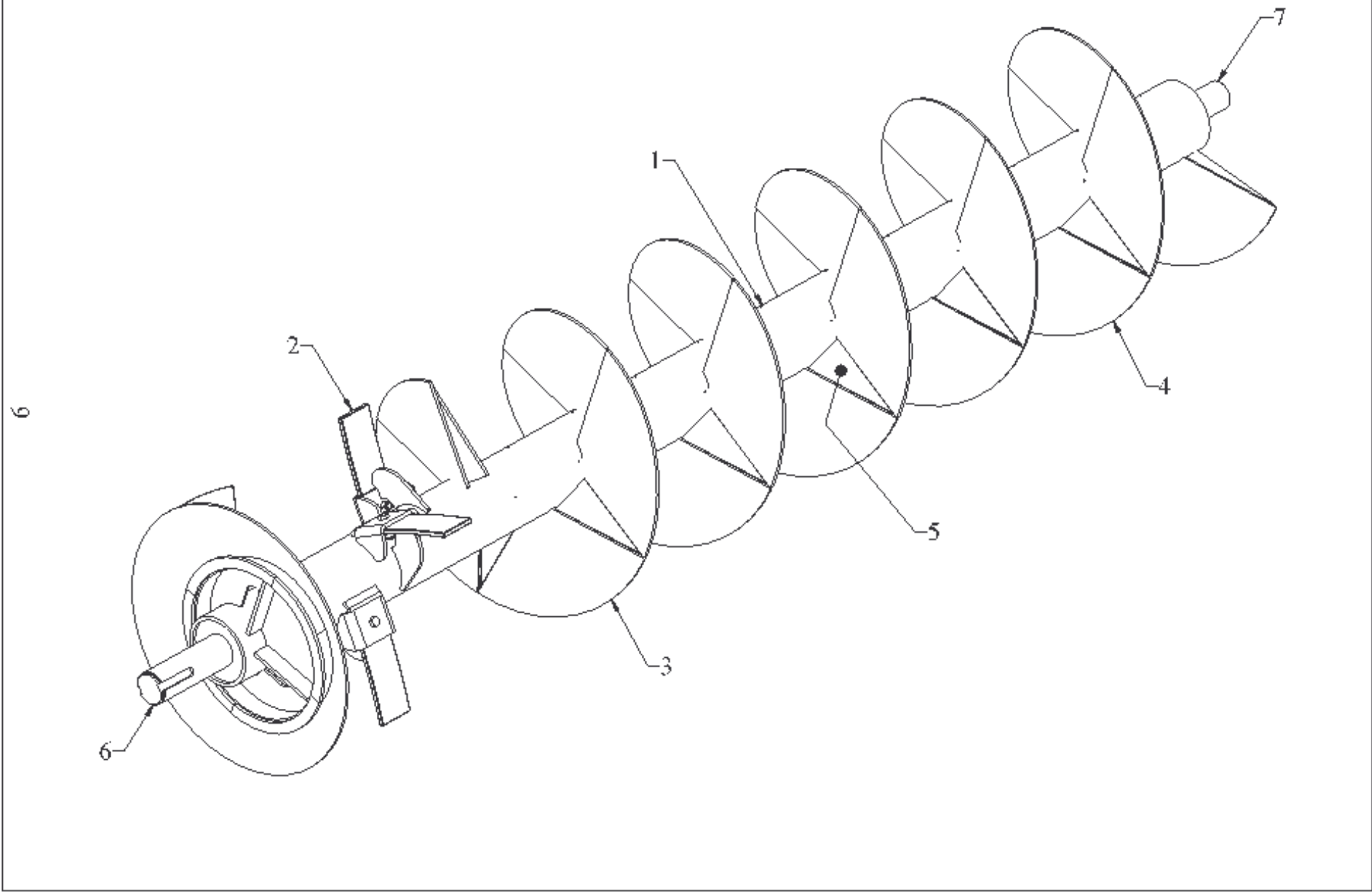
ROTOR DRIVE



FRONT DRIVE ASSEMBLY

<u>REF</u>	<u>PART No.</u>	<u>DESCRIPTION</u>	<u>QTY</u>	<u>REF</u>	<u>PART No.</u>	<u>DESCRIPTION</u>	<u>QTY</u>
1	990525	3 1/2" Circlip	1	28	110604	Duplex chain	1
2	110609	Key	2	29	200537	Simplex chain	1
3	110608	95 th duplex keyed Sprocket	1	30	110603	Simplex chain	1
4	200506	Thrust Washer	1	31	200422	Front guard top	1
5	200504	Front auger bearing nylon bush	1	32	200400	Front guard btm	1
6	990502	Grease nipple	1	33		Bolt M16 x 80	1
7		Oilite bearing (Inclusive with 110607)	2	34	200978	Washer	1
8	110607	10 th bushed duplex sprocket	1	35	990114	6006DDUCM Bearing (rhp)	2
9	120425	Chain adjuster pin	1	36	200540	12 th Idler Sprocket	1
10	120287	Chain Tensioner Brkt	1	37	200541	Bush	1
11	990524	2" Circlip	1	38	200979	Adjusting brkt	1
12	110605	76 th simplex keyed sprocket	1	39	200801	Front auger bearing weld assy	1
13	110610	Key	1	40	200508	Felt seal	1
14	990105	MP2 bearing	2	41	110434	Spacer	1
15	110611	Key	1	42	200425	P.T.O. Guard	1
16	110606	12 th duplex keyed sprocket	1	43	200976	Sealing Plate	1
17	120406	Spacer	1	44	200513	Nylon Spacer	1
18	120405	Lay Shaft	1	45	200131	Adjuster	1
19	200510	Front Drive shaft	1	46	200981	Tensioner Brkt weld assy	1
20	990107	MSF 1 3/4 bearing	2				
21	120407	P.T.O. Box Spacer	1			EXTRAS	
22	200511	16 th simplex sprocket	1		990542	1" P simplex half link	
23	200512	12 th splined sprocket	1		990543	1" P simplex con/link	
24	200929	P.T.O. box weld assy	1		990544	1" P simplex inner link	
25	110612	Key	1		990545	Duplex half link	
26	990524	2" Circlip	1		990546	1" P duplex con/link	
27	200536	17 th Sprocket	1		990547	1" P duplex inner link	

Dual Spreader: Parts List

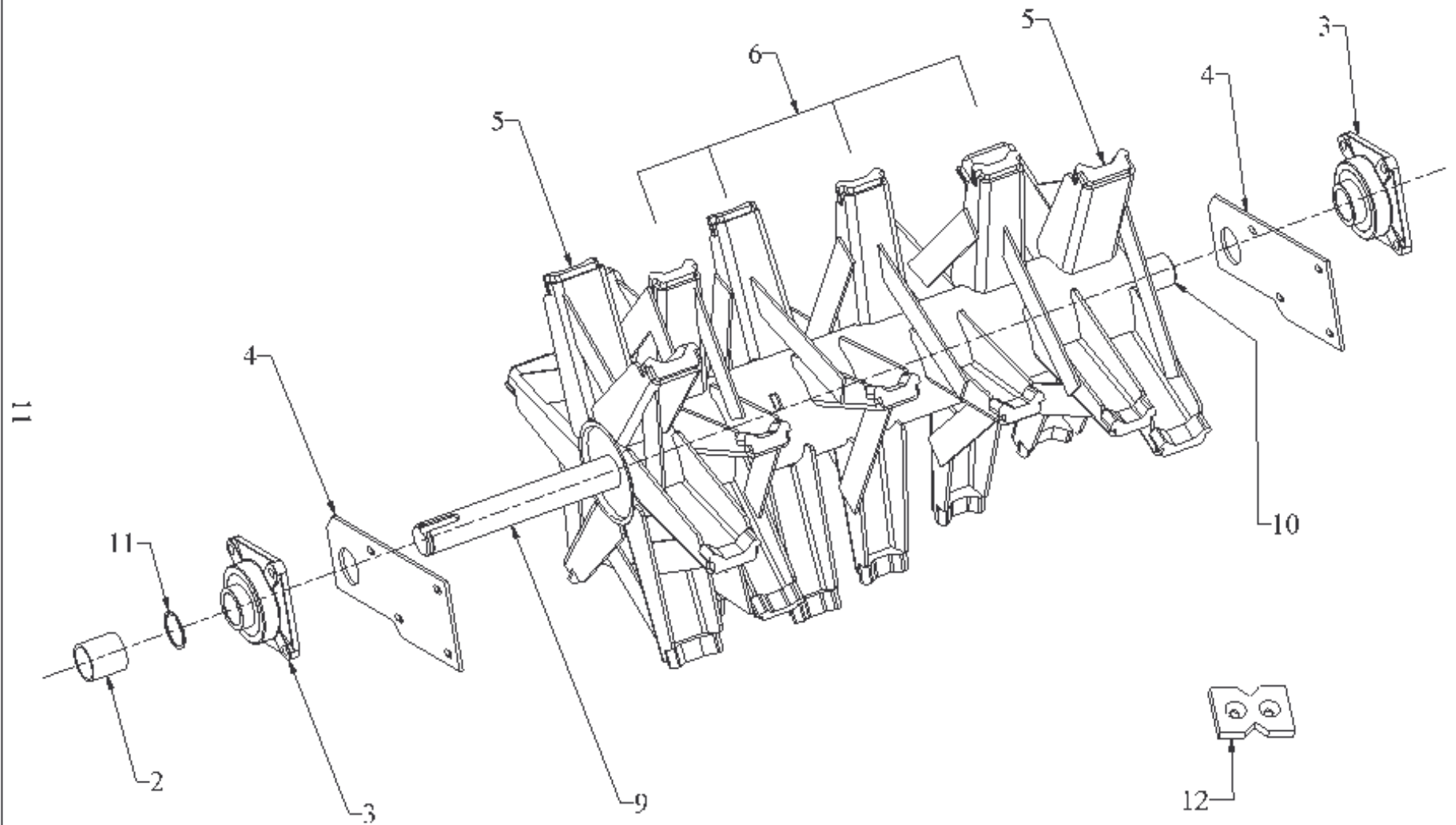


1300/1600/2000/3000 AUGER ASSY

<u>REF</u>	<u>PART NO</u>	<u>DESCRIPTION</u>	<u>QTY</u>
1	110300	Auger Assy 1300	1
1	160300	Auger Assy 1600	1
1	200300	Auger Assy 2000	1
1	570300	Auger Assy 3000	1
2	110315s	Spring plate	4
3	110311	1300/1600 Dual Auger plate 8 mm	6/12/15/15
4	110310	Auger plate 6 mm	11/10/11/16
5	110313	1300/1600 Dual Filler plate	17/22/26/32
6	110320	Front Shaft Assy (1300/1600)	1
6	200320	Front Shaft Assy (2000/3000)	1
7	110324	Rear Shaft Assy (1300/1600)	1
7	200324	Rear Shaft Assy (2000/3000)	1

PLEASE STATE THE CORRECT MACHINE SERIAL NUMBER AND PART NUMBER WHEN ORDERING PARTS

Dual Spreader: Parts List



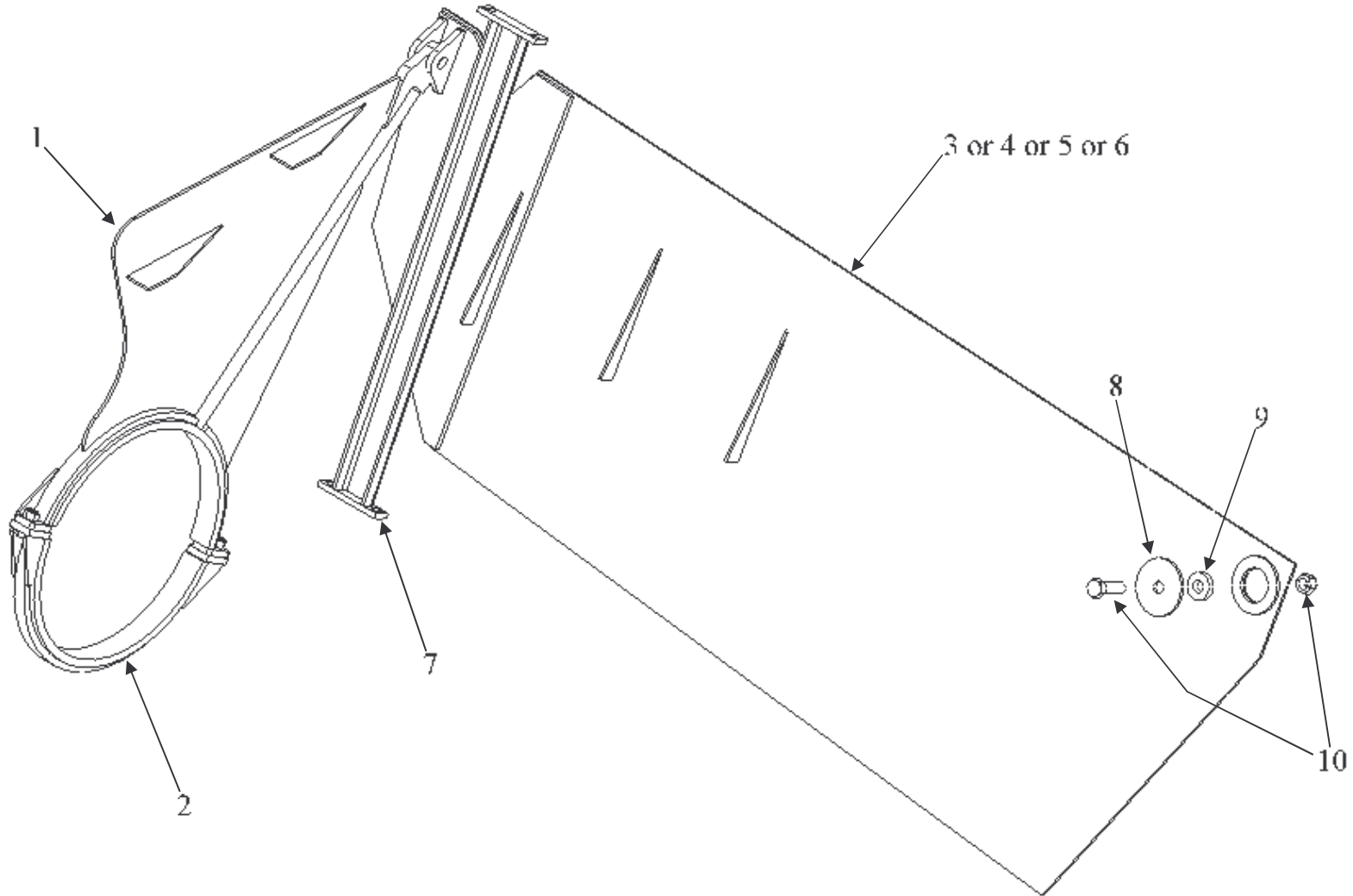
FEED OUT ROTOR ASSY

<u>REF</u>	<u>PART NO</u>	<u>DESCRIPTION</u>	<u>QTY</u>	<u>REF</u>	<u>PART NO</u>	<u>DESCRIPTION</u>	<u>QTY</u>
		STANDARD ROTOR				3000 ROTOR	
1	201000	FEED OUT ROTOR W/ASSY	1	1	201401	FEED OUT ROTOR W/ASSY	1
2	201009	SPACER	1	2	201009	SPACER	1
3	990112	MSF2 BEARING	2	3	990112	MSF2 BEARING	2
4	200970	COVER PLATE	2	4	200970	COVER PLATE	2
5	201007	ROTOR TIP OUTER	10	7	201410	FRONT CHANNEL W/A	13
6	201008	ROTOR TIP INNER	18	8	201420	COMMON CHANNEL W/A	15
7	201001	FRONT & REAR CHANNEL	10	9	201022	FRONT SHAFT W/A	1
8	201002	INTERMEDIATE CHANNEL	18	10	201023	REAR SHAFT W/A	1
9	201022	FRONT SHAFT W/ASSY	1	12	201402	REPLACEABLE BLADE	28
10	201023	REAR SHAFT W/ASSY	1				
11	201010	SHIM 1mm	As Req				
11a	201010	SHIM 2mm	As Req				
11b	201010	SHIM 3mm	As Req				

PLEASE STATE THE CORRECT MACHINE SERIAL NUMBER AND PART NUMBER WHEN ORDERING PARTS

Dual Spreader: Parts List

13

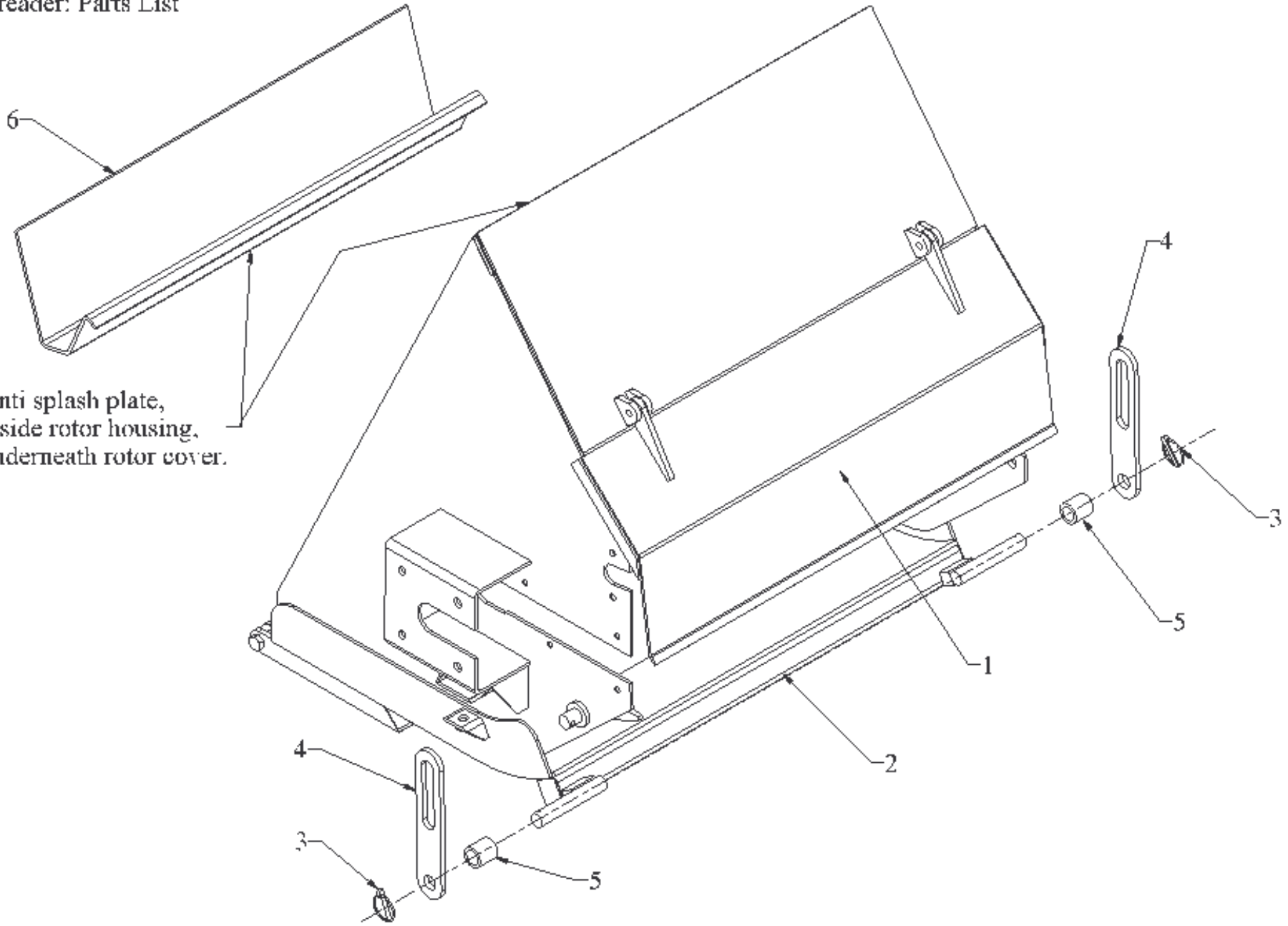


CAM ARM AND MOVING WALL

<u>REF</u>	<u>PART NO</u>	<u>DESCRIPTION</u>	<u>QTY</u>	<u>REF</u>	<u>PART NO</u>	<u>DESCRIPTION</u>	<u>QTY</u>
1	200715	Cam arm top	1				
2	200701	Cam arm bottom	1				
3	130253	1300 Moving wall assy	1				
4	160253	1600 Moving wall assy	1				
5	200918	2000 Moving wall assy	1				
6	570918	3000 Moving wall assy	1				
7	200924	Guide Channel	1				
8	200994	Retaining Washer	1				
9	200927	Pivot bush	1				
10		M20 Nut and bolt	1				

PLEASE STATE THE CORRECT MACHINE SERIAL NUMBER AND PART NUMBER WHEN ORDERING PARTS

Dual Spreader: Parts List



Anti splash plate,
inside rotor housing,
underneath rotor cover.

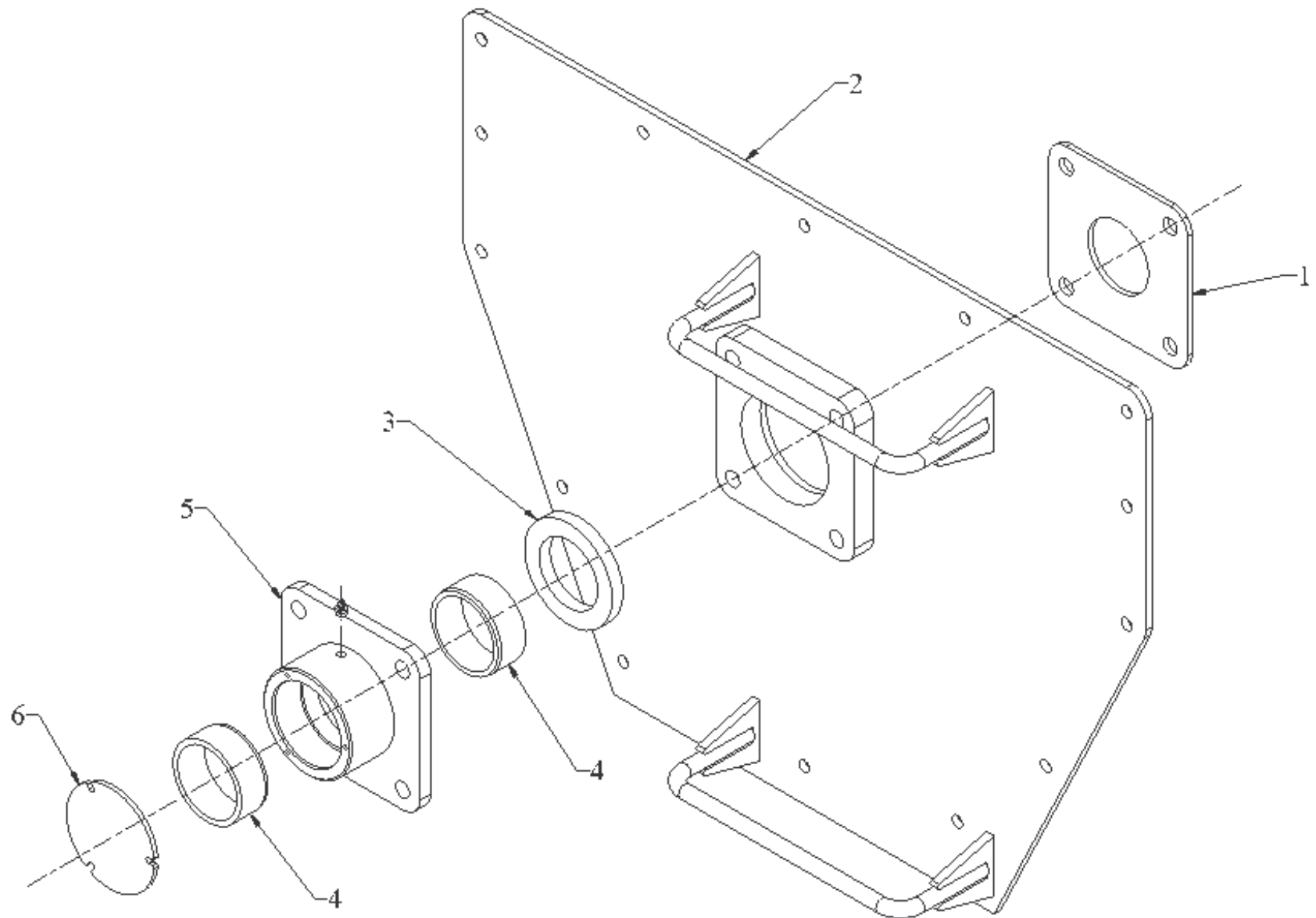
ROTOR COVER AND TRAY

<u>REF</u>	<u>PART NO</u>	<u>DESCRIPTION</u>	<u>QTY</u>	<u>REF</u>	<u>PART NO</u>	<u>DESCRIPTION</u>	<u>QTY</u>
1	200946	Rotor Cover	1				
2	200904	Tray	1				
3	990515	Linch pin	2				
4	200965	Link	2				
5	200974	Spacer	2				
6	205117	Anti splash plate (fitted from 07/2006)	1				

PLEASE STATE THE CORRECT MACHINE SERIAL NUMBER AND PART NUMBER WHEN ORDERING PARTS

Dual Spreader: Parts List

17



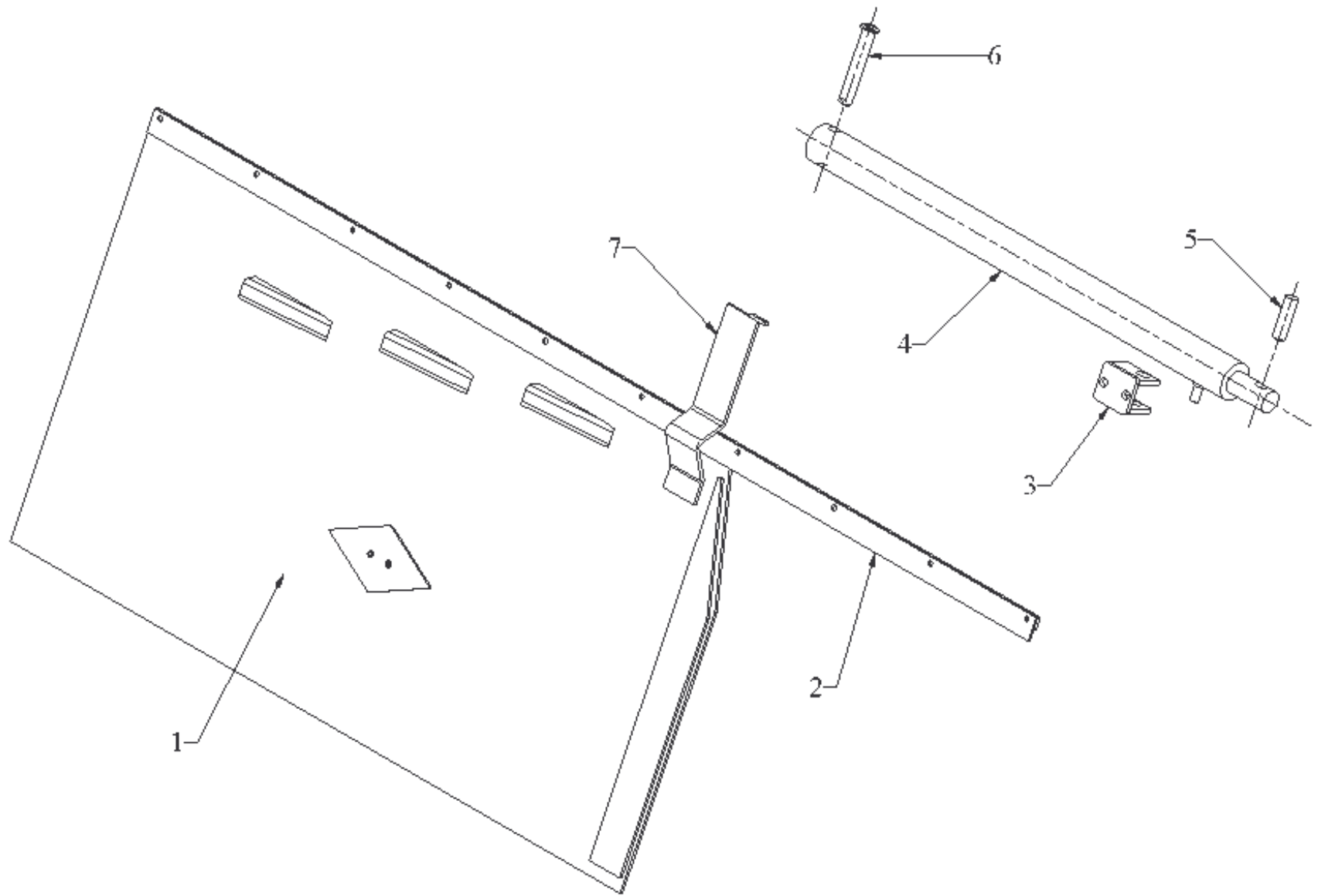
REAR PLATE AND BEARING

<u>REF</u>	<u>PART NO</u>	<u>DESCRIPTION</u>	<u>QTY</u>	<u>REF</u>	<u>PART NO</u>	<u>DESCRIPTION</u>	<u>QTY</u>
1	200977	SEAL PLATE	1				
2	200966	REAR PLATE ASSY	1				
3	200509	FELT SEAL	1				
4	200505	BEARING	2				
5	200804	BEARING HOUSING	1				
6	200807	COVER PLATE	1				

PLEASE STATE THE CORRECT MACHINE SERIAL NUMBER AND PART NUMBER WHEN ORDERING PARTS

Dual Spreader: Parts List

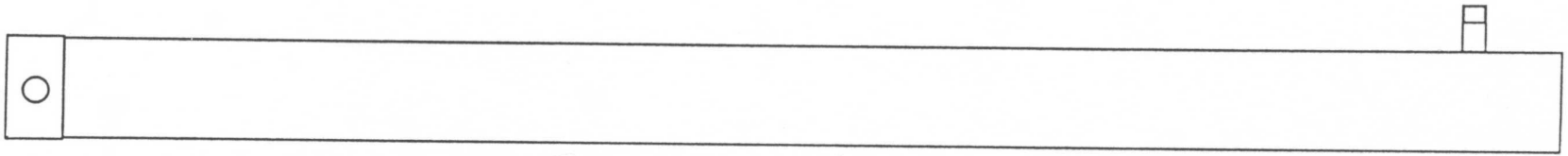
19



SLIDING DOOR CYLINDER AND TRACK

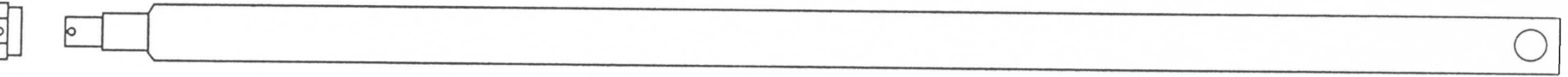
<u>REF</u>	<u>PART NO</u>	<u>DESCRIPTION</u>	<u>QTY</u>	<u>REF</u>	<u>PART NO</u>	<u>DESCRIPTION</u>	<u>QTY</u>
1	200953	SLIDING DOOR ASSY	1				
2	200959	DOOR TRACK TOP	1				
3	200961	1300/1600 CYLINDER BRKT	1				
4	200502	2000 CYLINDER PLUS EXTENSION PIECE	1				
5	200971	FRONT CYLINDER PIN	1				
6	200972	REAR CYLINDER PIN	1				
7	200956	SCRAPER PLATE	1				

PLEASE STATE THE CORRECT MACHINE SERIAL NUMBER AND PART NUMBER WHEN ORDERING PARTS



1

2

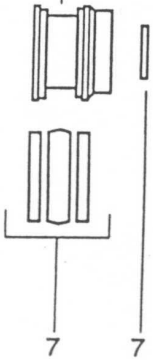


4

3

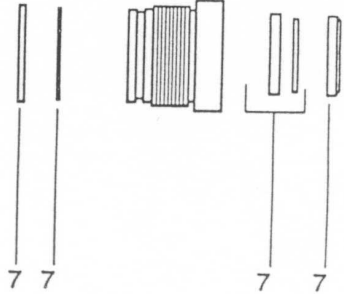
5

6



7

7



7

7

7

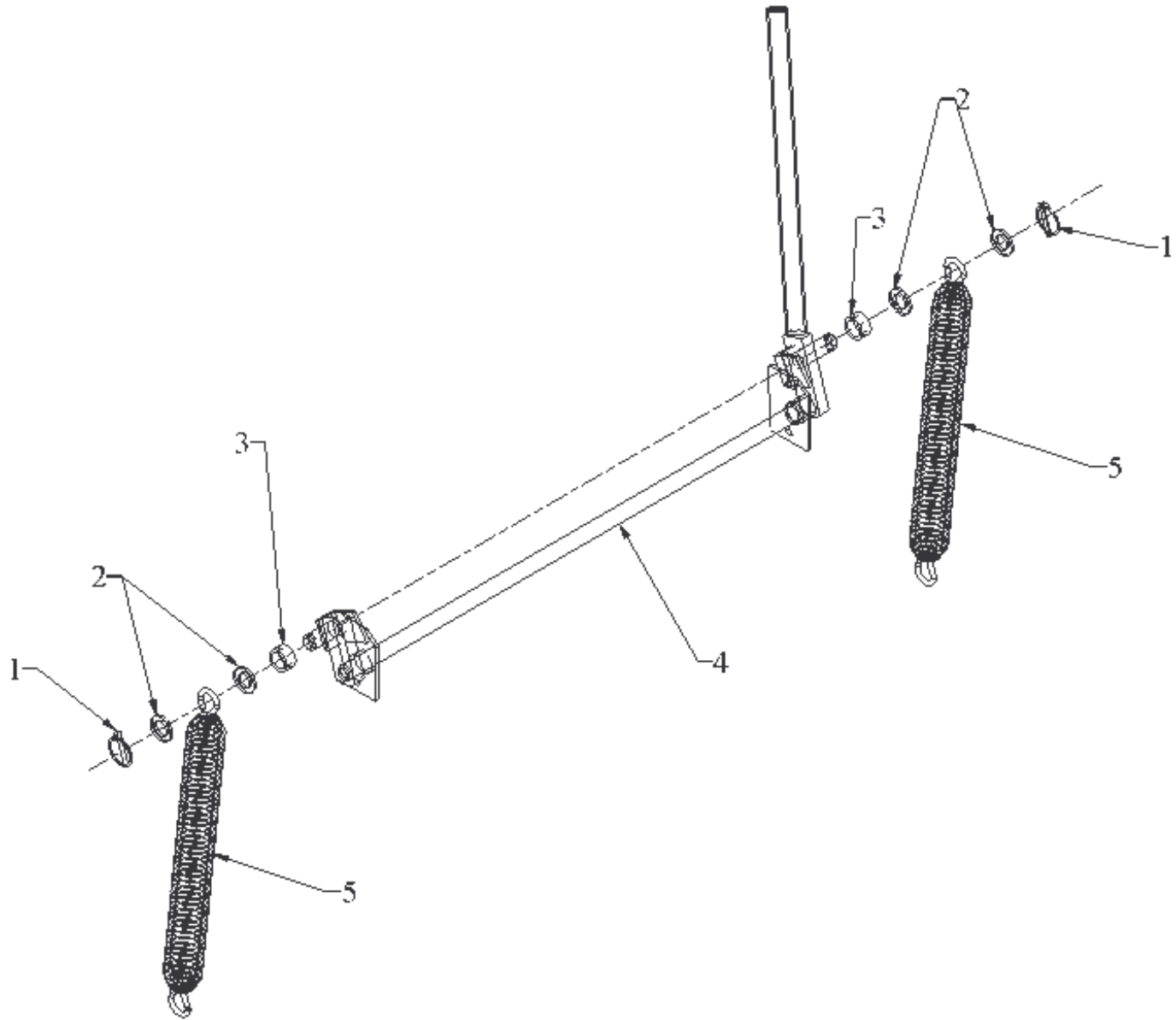
7

1300, 1600 and 2000 Door Cylinder Assembly

<u>REF</u>	<u>PART NO</u>	<u>DESCRIPTION</u>	<u>QTY</u>	<u>REF</u>	<u>PART NO</u>	<u>DESCRIPTION</u>	<u>QTY</u>
		<u>1300, 1600</u>				<u>2000, 3000</u>	
	120502	Cylinder Assy	1		200502	Door cylinder, complete	1
1	990600	Barrel	1	1	990617	Barrel Assembly	1
2	990601	Piston Rod	1	2	990618	Piston Rod	1
3		1" BSF Nut	1	3	990619	1" B.S.F.Nut	1
4		Split pin	1	4		Split Pin	1
5	990602	Piston Head	1	5	990620	Piston Head	1
6	990604	Gland Nut	1	6	990621	Gland Nut	1
7	SK/63/175/A	Seal Kit	1	7	990622	Seal Kit	1
					990622kramp	Seal Kit	1

PLEASE STATE THE CORRECT MACHINE SERIAL NUMBER AND PART NUMBER WHEN ORDERING PARTS

Dual Spreader: Parts List

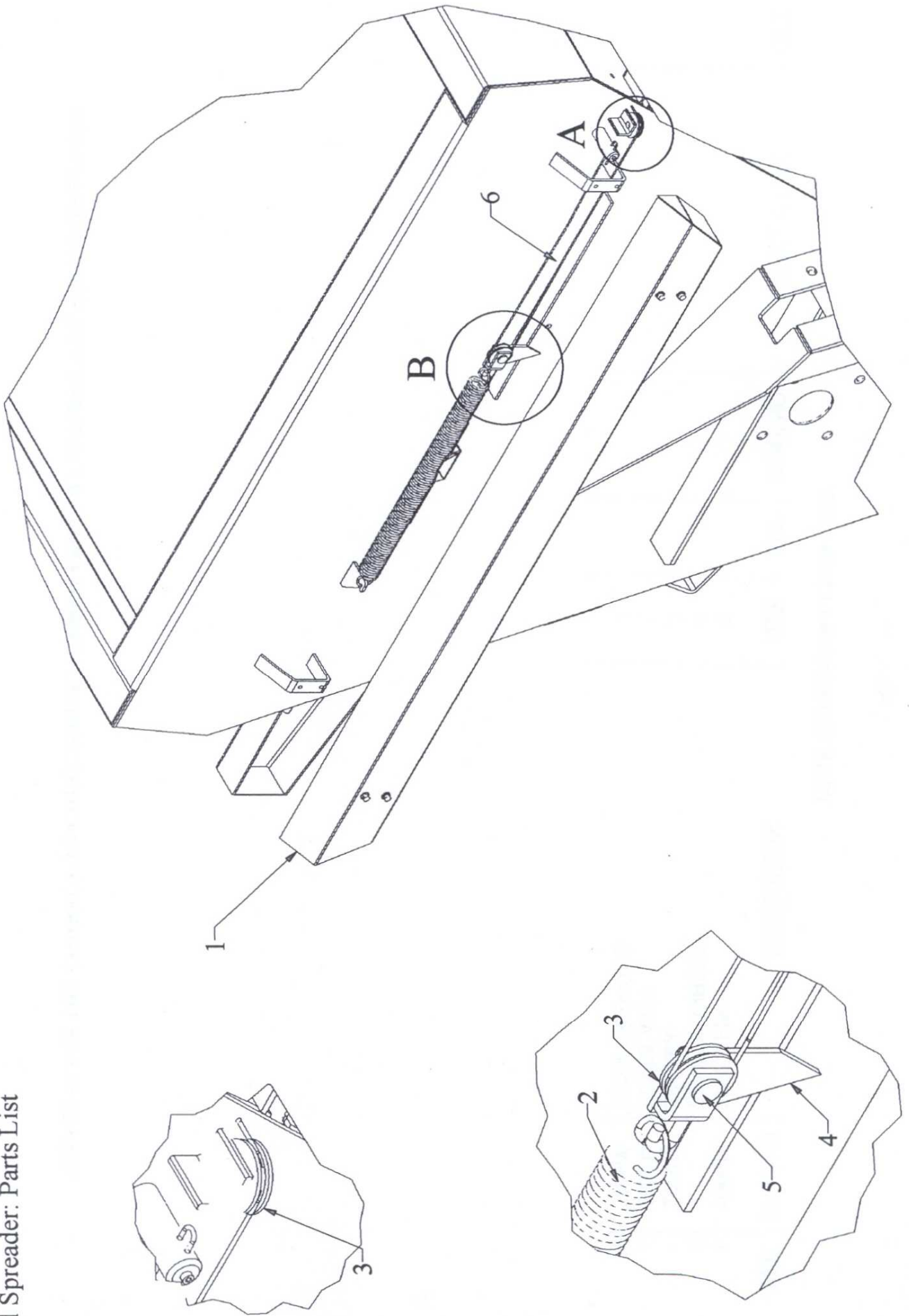


TRAY TENSIONER LEVER ASSY

<u>REF</u>	<u>PART NO</u>	<u>DESCRIPTION</u>	<u>QTY</u>	<u>REF</u>	<u>PART NO</u>	<u>DESCRIPTION</u>	<u>QTY</u>
1	990616	LINCH PIN	2				
2		PLAIN WASHERS	4				
3	200973	SPACER	2				
4	200934	LEVER ASSY	1				
5	120600	TENSION SPRING	2				

PLEASE STATE THE CORRECT MACHINE SERIAL NUMBER AND PART NUMBER WHEN ORDERING PARTS

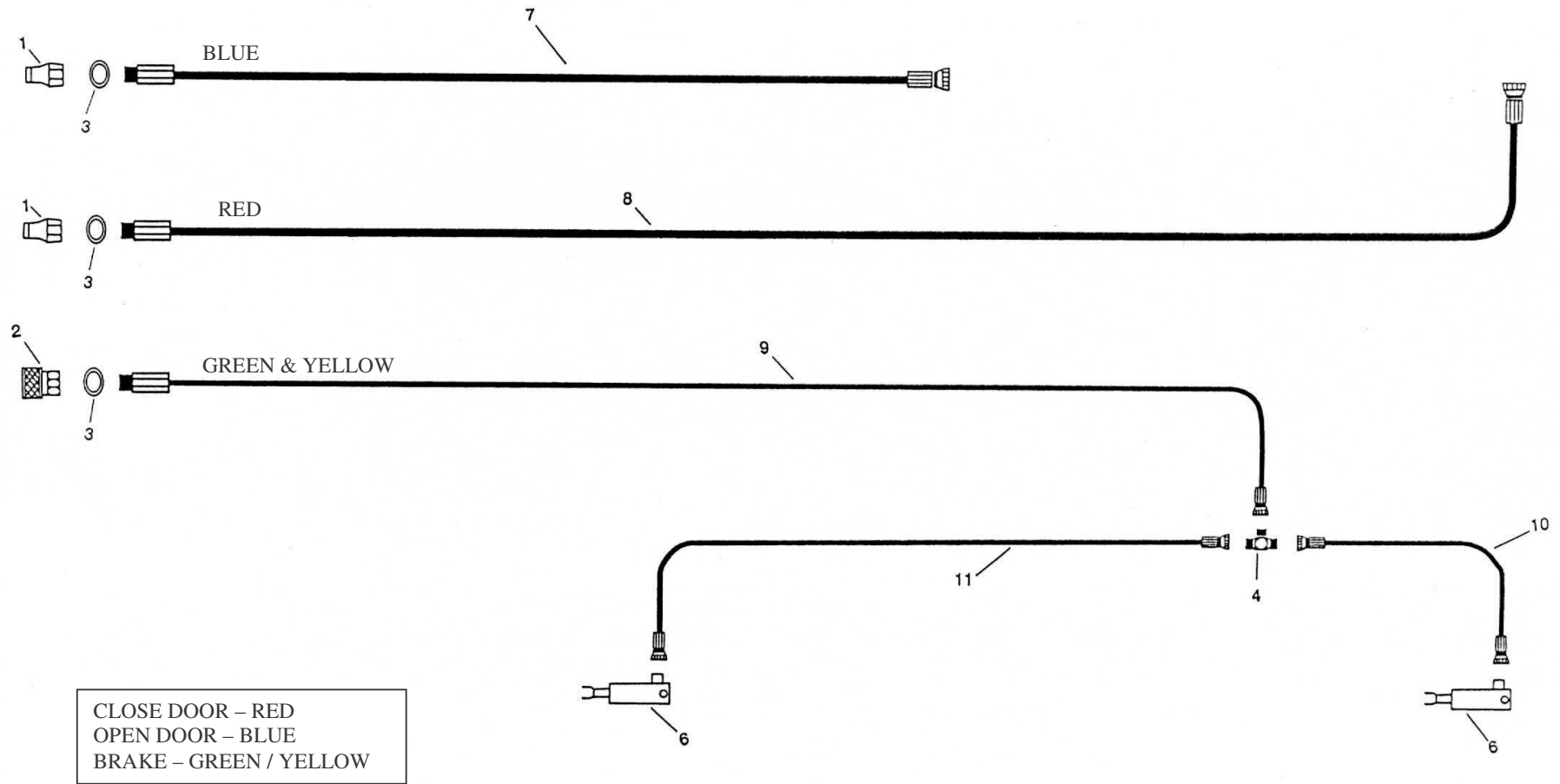
Dual Spreader: Parts List



DOOR INDICATOR ASSY

<u>REF</u>	<u>PART NO</u>	<u>DESCRIPTION</u>	<u>QTY</u>	<u>REF</u>	<u>PART NO</u>	<u>DESCRIPTION</u>	<u>QTY</u>
1	201123	COVER	1				
2	201119	SPRING	1				
3	201110	ROLLER	2				
4	201106	INDICATOR	1				
5	201104	ROLLER PIN	1				
6	201118	WIRE ROPE AND CLEVIS	1				

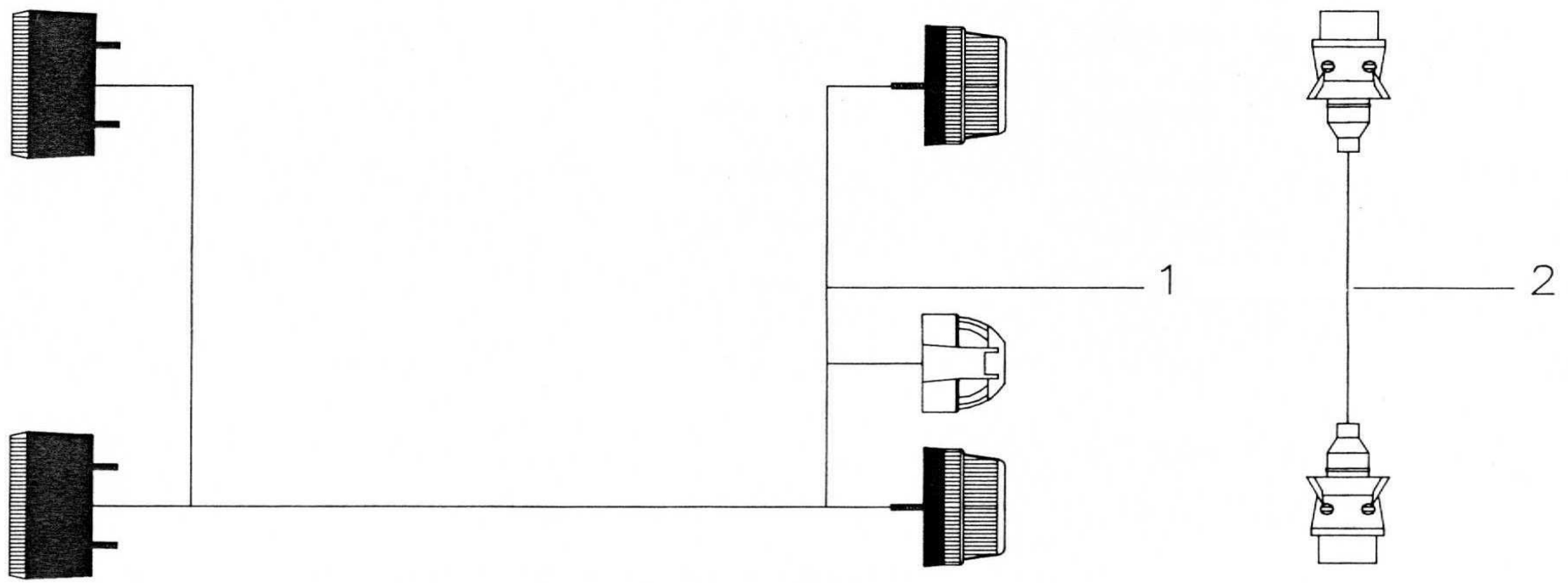
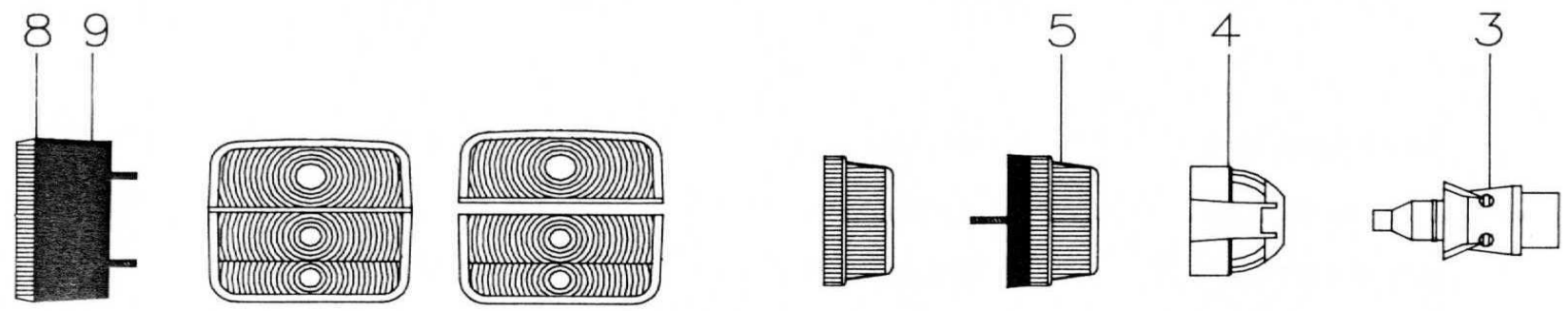
PLEASE STATE THE CORRECT MACHINE SERIAL NUMBER AND PART NUMBER WHEN ORDERING PARTS



HYDRAULICS

<u>REF</u>	<u>PART NO</u>	<u>DESCRIPTION</u>	<u>QTY</u>	<u>REF</u>	<u>PART NO</u>	<u>DESCRIPTION</u>	<u>QTY</u>
		<u>1300 Dual Spreader</u>				<u>1600 Dual Spreader</u>	
1	990201	Male Q/R coupling	2	1	990201	Male Q/R Coupling	2
2	990202	Female Q/R coupling brake	1	2	990202	Female Q/R Coupling	1
3	990206	½Dowty Washer	3	3	990206	½Dowty Washer	3
4	990213	¼" MMM 'T' Junction	1	4	990213	¼" MMM 'T' Junction	1
6	200503	Brake cylinder	2	6	200503	Brake cylinder	2
7	110502	Front Door Hose (5.76m)	1	7	110502	Front Door Hose (5.76m)	1
8	110501	Rear Door Hose (6.63m)	1	8	110501	Rear Door Hose (6.63m)	1
9	110507	Brake hose to tractor (5.6m)	1	9	110507	Brake Hose to tractor (5.6m)	1
10	110504	RH Brake Hose (1.07m)	1	10	160506	RH Brake Hose (1.07m)	1
11	110503	LH Brake Hose (0.83m)	1	11	160505	L H Brake Hose (0.83m)	1
		<u>2000 Dual Spreader</u>				<u>3000 Dual Spreader</u>	
1	990201	Male Q/R Coupling	2	1	990201	Male Q/R Coupling	2
2	990202	Female Q/R Coupling	1	2	990202	Female Q/R Coupling	1
3	990206	½ Dowty Washer	3	3	990206	½ Dowty Washer	3
4	990213	¼ MMM 'T' Junction	1	4	990213	¼ MMM 'T' Junction	1
6	990623	Brake Cylinder	2	6	990623	Brake Cylinder	2
7	200543	Door Hose (6.0m)	1	7	200543	Door Hose (6.0m)	1
8	As 7	Door Hose (6.0m)	1	8	As 7	Door Hose (6.0m)	1
9	200544	Brake Hose to tractor (6.0m)	1	9	570544	Brake Hose to tractor (6.0m)	1
10	200545	RH Brake Hose (0.83m)	1	10	200545	RH Brake Hose (0.83m)	1
11	200546	LH Brake Hose (1.07m)	1	11	200546	LH Brake Hose (1.07m)	1

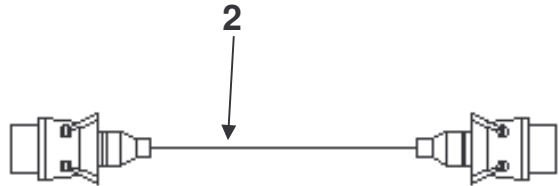
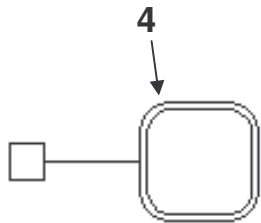
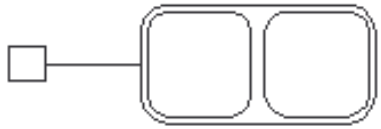
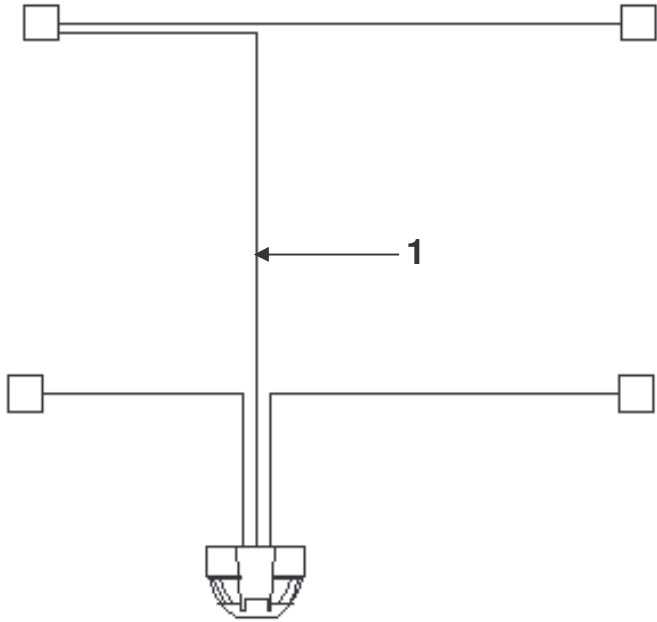
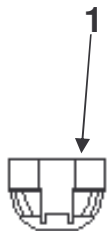
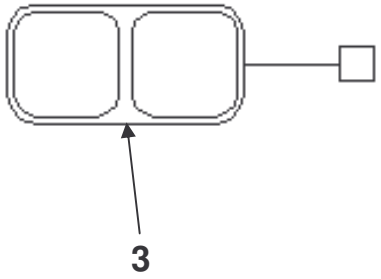
PLEASE STATE THE CORRECT MACHINE SERIAL NUMBER AND PART NUMBER WHEN ORDERING PARTS



DUAL LIGHTS

<u>REF</u>	<u>PART NO</u>	<u>DESCRIPTION</u>	<u>QTY</u>			
1	201720	COMPLETE SET	1			<u>LIGHTING CONNECTIONS</u>
2	201721	TRACTOR LEAD	1			
3	201722	7 PIN PLUG	2	PIN 1	GREEN	LH INDICATOR LAMP
4	201723	7 PIN SOCKET	1	PIN 2	BLUE	REAR FOG LAMP
5	201724	FRONT LIGHT COMPLETE	2	PIN 3	WHITE	EARTH RETURN
8	201727	RH REAR LIGHT COMPLETE	1	PIN 4	YELLOW	RH INDICATOR LAMP
9	201728	LH REAR LIGHT COMPLETE	1	PIN 5	BROWN	RH TAIL & NO PLATE LAMP
				PIN 6	RED	STOP LAMP
				PIN 7	BLACK	LH TAIL & NO PLATE LAMP
				<u>BULBS</u>		
		12VC5W-E8-3E2T118		REAR SIDE	12Volt 5Watt	2 off
		2821LUXLAMP12VR5W 37R-E13-2A1		FRONT SIDE	12Volt 5Watt	2 off
		CAB12VP214-E13-2A3		BRAKE AND INDICATOR	12Volt 21Watt	4 off

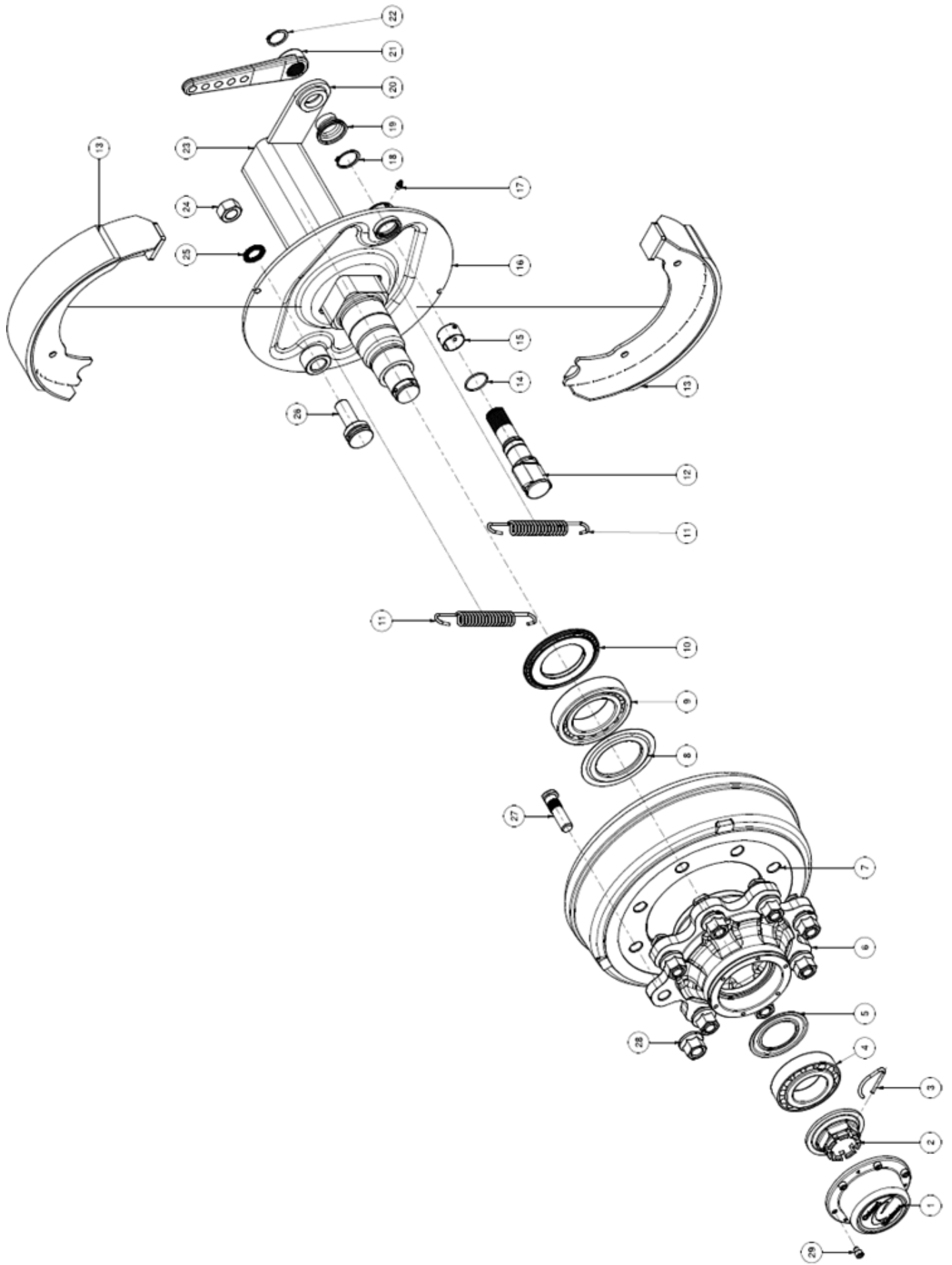
PLEASE STATE THE CORRECT MACHINE SERIAL NUMBER AND PART NUMBER WHEN ORDERING PARTS



3000 DUAL LIGHTS

<u>REF</u>	<u>PART NO</u>	<u>DESCRIPTION</u>	<u>QTY</u>			
1	571700	COMPLETE SET	1			<u>LIGHTING CONNECTIONS</u>
2	201721	TRACTOR LEAD	1			
3	252901BR FL	REAR LIGHT	2	PIN 1	GREEN	LH INDICATOR LAMP
4	252901BR FL	FRONT LIGHT	2	PIN 2	BLUE	REAR FOG LAMP
				PIN 3	WHITE	EARTH RETURN
				PIN 4	YELLOW	RH INDICATOR LAMP
				PIN 5	BROWN	RH TAIL & NO PLATE LAMP
				PIN 6	RED	STOP LAMP
				PIN 7	BLACK	LH TAIL & NO PLATE LAMP
				<u>BULBS</u>		
		GE2619F		FRONT LIGHT BULB		
		GE1057F		ORANGE REAR LIGHT BULB		
		GE1077F		RED REAR LIGHT BULB		

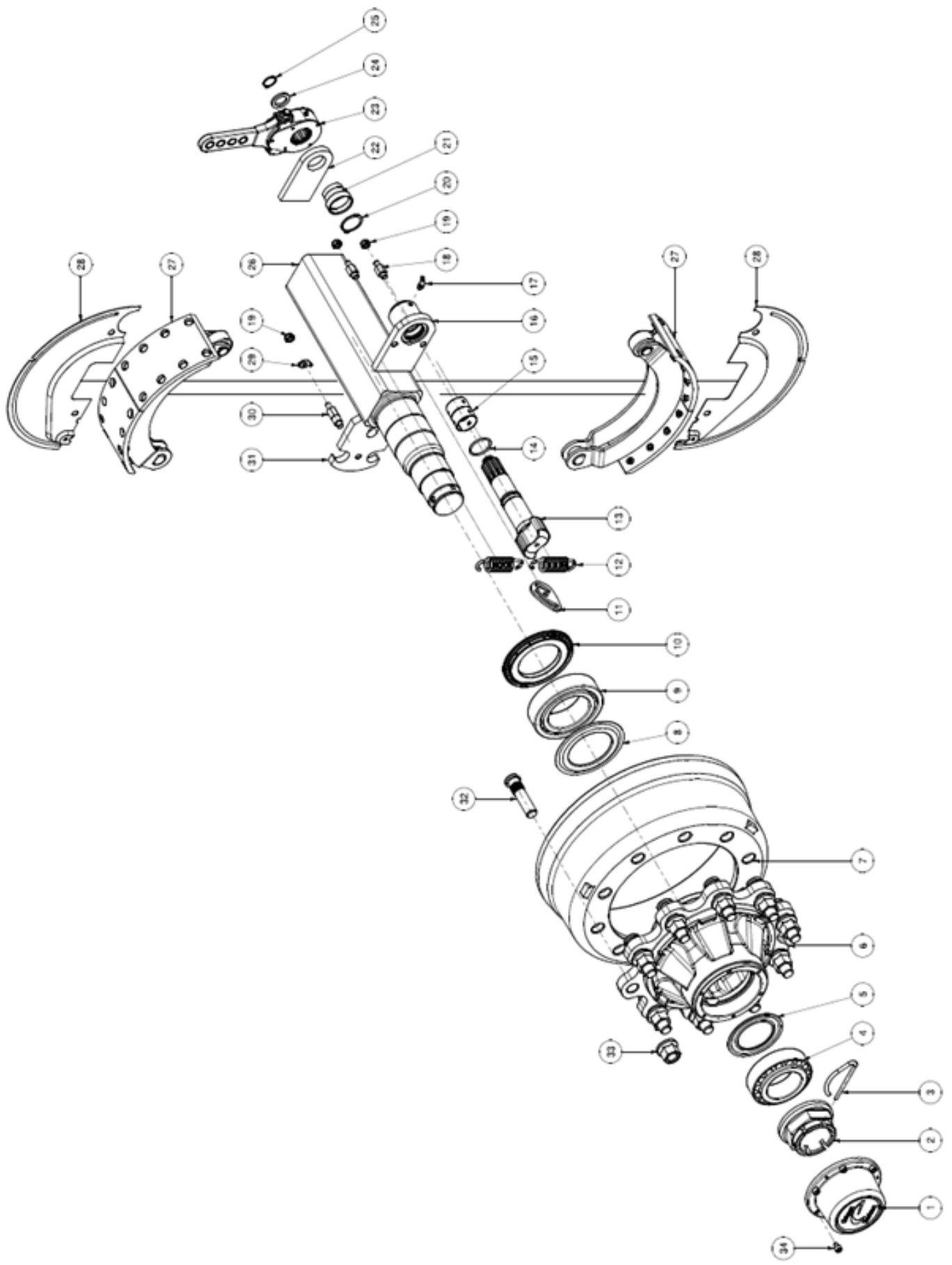
PLEASE STATE THE CORRECT MACHINE SERIAL NUMBER AND PART NUMBER WHEN ORDERING PARTS



1300 & 1600 Stub Axle Assy's

	Part N°	Description	Qty
1	56112505	Cap	1
2	57548B6	Castellated Nut	1
3	58209	Lock Pin	1
4	59132213	Outer Bearing	1
5	5531091	Outer Washer	1
6	61L8TD002	Hub	1
7	66LTG0801	Brake Drum	1
8	5511401	Inner Washer	1
9	59132216	Inner Bearing	1
10	5441401	Grease Seal	1
11	738117	Spring	2
12	75A3552017	Cam Shaft	1
13	732TG01	Brake Shoe	2
14	53103801	O Ring	1
15	771382601	Bush	1
16	741TG9016	Guard Plate	1
17	98608A1	Grease Nipple	1
18	58513	Cirdip	1
19	53A08	Rubber Seal	1
20	74403112	Support Arm	1
21	7611503	Cam Lever	1
22	58511	Cirdip	1
23	69TI900080	Axle Beam	1
24	97124B1	M24 Nut	1
25	9800241	M24 Washer	1
26	83304503	Pivot Pin	1
27	57120B8	Wheel Stud	8
28	57322B2	M22 Wheel Nut	8
29	96308A0101	Hub Cap Screw	6

When ordering component/s, please state capacity of machine.



2000 Stub Axle Assy

	Part N°	Description	Qty
1	56113005	Cap	1
2	57570D1	Castellated Nut	1
3	58207	Lock Pin	1
4	59133215	Outer Bearing	1
5	5531191	Outer Washer	1
6	61L1M001	Hub	1
7	66LVA1001	Brake Drum	1
8	5511503	Inner Washer	1
9	59133118	Inner Bearing	1
10	541502	Grease Seal	1
11	736WA01	Spring Plate	1
12	738119	Spring	2
13	7544062020	Cam Shaft	1
14	53104101	O Ring	1
15	771422601	Bush	2
16	749VAA013	Brake Support	1
17	98608A1	Grease Nipple	1
18	57712C4	Sleeve (short)	2
19	97510B1	M10 Nut	3
20	58514	Cirdip	1
21	53A03	Rubber Seal	1
22	74401922	Support Arm	1
23	7621603	Cam Lever	2
24	9812601	M26 Washer	1
25	58508	Cirdip	1
26	69MA00008	Axle Beam	1
27	732VA01	Brake Shoe	4
28	743VAA012	Guard Plate	1
29	57B1001	Washer	1
30	57712C3	Sleeve (long)	1
31	749VAA015	Brake Support Plate	1
32	57122B4	Wheel Stud	10
33	57322B2	M22 Wheel Nut	10
34	96308A0101	Hub Cap Screw	6

When ordering component/s, please state capacity of machine.

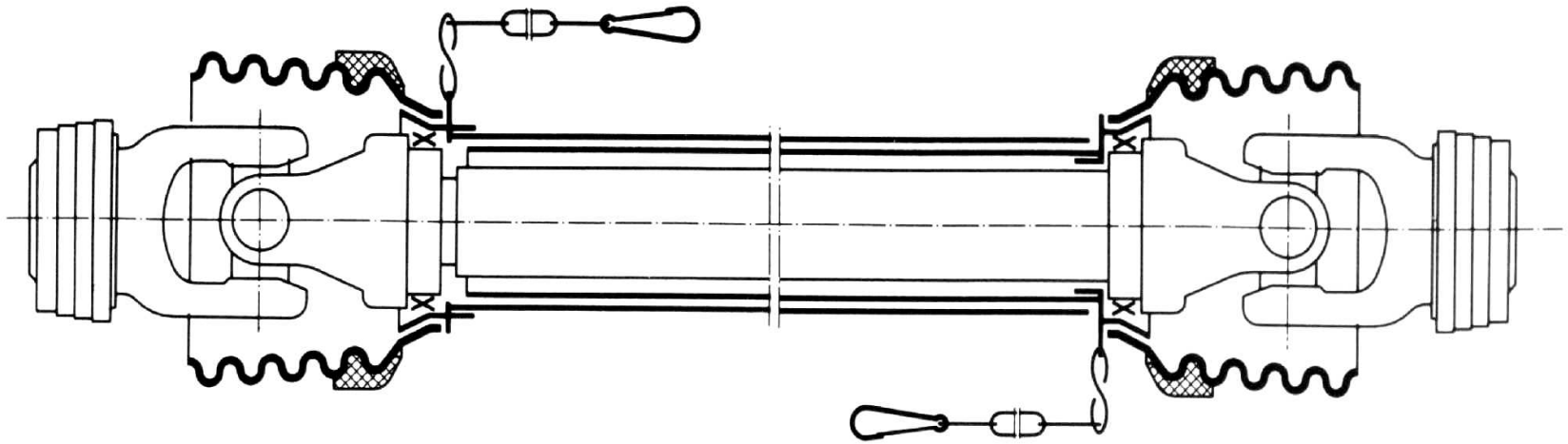
3000 Stub Axle Assy

	Part N°	Description	Qty
1	56115002	CAP 150 BOLT ON COLAERT	1
2	57570D2	CROWN NUT M70X2.00 H49	1
3	58214	SPRING PIN FOR NUT M70	1
4	57B7002	LOCK WASHER FOR M70	1
5	59133118	BEARING 33118 090 150 45	1
6	5531391	NILOS GREASE SEAL	1
7	61L1ZA001	HUB H10 22 150-180 280-335	1
8	66LWA1001	DRUM 406X140 H10 22 335-280	1
9	5511801	NILOS FOR BEARING 33122	1
10	59133122	BEARING 33122 110 180 56	1
11	54G1801-1	INDUSTRIAL GREASE SEAL	1
12	736WA01	SPRING EXTENDER	1
13	738119	SPRING D30 L100	2
14	7547554062007	CAM SHAFT D40 B300 S RIGHT/LEFT	1
15	734WA01	BRAKE SHOE 406X140 414S	4
16	743VAA512	PROTECTION PLATE	1
17	53104101	OR 146-353 D041, 23 WIRE 3,53	1
18	771422601	BUSH D42/44.5 L26	2
19	749VAA413	BRAKE SUPPORT	1
20	98608A2	GREASE NIPPLE 45° M8X1,25	1
21	57712C2	SPACER M12X1,75 M10X1,50 L53	2
22	97510B1	NUT M10X1,50 DIN985	3
23	58514	SEE GER D42 DIN471	1
24	53A03	RUBBER CAP	1
25	74401105	CAM SHAFT SUPPORT	1
26	7621603	SLACK ADJUSTER	1
27	9812601	WASHER M26 D26 D39 TK4	1
28	58508	SEE GER D25 DIN471	1
29	69ZASE0011	BODY STUB AXLE S150 F630	1
30	57B1001	LOCK WASHER Ø10	1
31	57712C1	SPACER M12X1,75 M10X1,50 L72	1
32	749VAA415	SUPPORT DE FREIN	1
33	57122B4	STUD M22X1,50 L96	10
34	57322B2	STUD NUT M22X1,50	10
35	96308A0101	SOCKET HEAD SCREW	6

When ordering component/s, please state capacity of machine.

COMPLETE P.T.O. DRIVE SHAFT

39



Shear Pin M8 x 55 x Grade 12.9
990541

PART NO. 200539