



Maelstrom 8 & 14

Operating Manual and Parts List



Harry West (Prees) Ltd

Lower Heath, Prees, Whitchurch, Shropshire, SY13 2BT

Tel: 01948 840 465 Fax: 01948 841 055

www.harrywest.co.uk Email: sales@harrywest.co.uk

XX700001-XX700010
XX740001-XX740010

AW/19

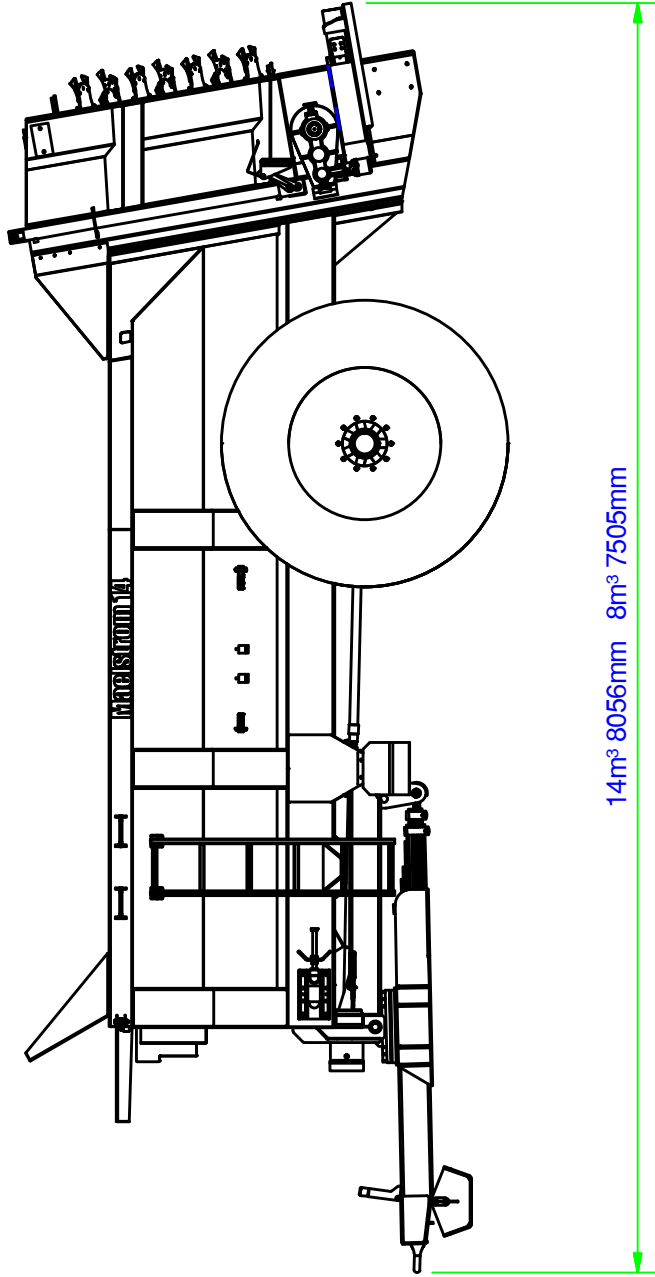
COVER BLANK

Maelstrom 8 &14

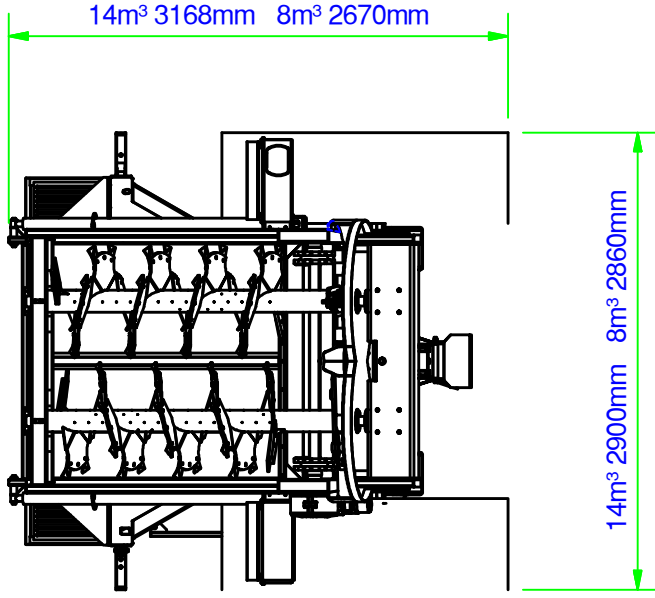
Index Sheet

1. Index
2. Maximum dims & loads
3. Safety Instructions
4. Operating instructions
5. Maintenance
6. Maintenance
7. Maintenance
8. Maintenance
9. Blank
10. Rotor illustration
11. Rotor detail
12. Rotor mounting illustration
13. Rotor mounting detail
14. Conveyor illustration
15. Conveyor detail
16. Drawbar & axle illustration
17. Drawbar & axle detail
18. Driveline illustration
19. Driveline detail
20. Light brkt & door pins illustration
21. Light brkt & door pins detail
22. Light circuit illustration
23. Light circuit detail
24. Conveyor hyd circuit
25. Brake circuit
26. Hyd door circuit
27. Conveyor hyd circuit (manual)
28. 14m³ Axle breakdown
29. 14m³ Axle breakdown
30. 14m³ Axle breakdown
31. 8m³ Axle breakdown
32. 8m³ Axle breakdown
33. 8m³ Axle breakdown
34. Outer gearbox
35. Centre gearbox
36. Proportional Valve
37. Tilley inspection sheet

Maximum Outer Dimensions & Loads



- 14m³ Minimum Tyre Pressure - 4 Bar (58psi)
- 14m³ Maximum Tyre Pressure - 4.6 Bar (67psi)
- 14m³ Max Payload - 12000 kg
- 14m³ Maximum Speed Restriction - 20 mph



- 8m³ Minimum Tyre Pressure - 2.4 Bar (58psi)
- 8m³ Maximum Tyre Pressure - 2.8 Bar (67psi)
- 8m³ Max Payload - 8000 kg
- 8m³ Maximum Speed Restriction - 20 mph

SAFE STOP PROCEDURE

- Make sure handbrake is fully applied.
- Make sure all controls and equipment is left safe.
- Stop the engine.
- Remove the key.

Always use SAFE STOP.

- Before leaving your seat; or
- When anyone else approaches; or
- When anyone else is working on the machine.

You need to take extra precautions when safe stop is not possible.

SAFETY

1. Keep all personnel clear of the machine when manoeuvring or spreading.
2. Do not permit anyone to ride on the machine.
3. Never enter the machine to clear blockages or carry out maintenance unless following the **'SAFE STOP PROCEDURE'**.
4. In use, keep guards in place, they are for your protection. Ensure that P.T.O. guard chains are secured.
5. P.T.O. DRIVESHAFT – Check that there is a minimum overlap of 150mm of the lemon section tubes and that these tubes do not bottom on full lock. Should the tubes need shortening, cut equal amounts from each tube and the plastic guard tube. Note! **'SAFE STOP PROCEDURE'**.
6. Check that the tractor is large enough to control the machine in all conditions, do not overload the spreader.
7. Check that all hydraulic circuits function correctly, especially the brakes. Hoses need to be checked periodically for excessive cracking or damage that may compromise their functionality. Always ensure **SAFE STOP PROCEDURE** is in place.
8. FOREIGN BODIES IN MANURE – the machine can throw stones or other objects a great distance. Ensure that the machine is kept well clear of people, livestock, roads and buildings.
9. Disengage the P.T.O. when turning sharp corners.
10. Check rotor blades for damage. All blades must be secure before commencing spreading. Use correct blade bolts grade 8.8. Note! **'SAFE STOP PROCEDURE'**.

Operating Instructions

1. PTO REQUIREMENT

1000 rpm giving 41kw (55hp)

Fit the PTO shaft with:

- i. The clutch end to the machines 1 3/8" 6 spline shaft.
- ii. The wide angle joint to the tractor 1 3/8" 21 spline shaft.

The maximum PTO angle is 80 degrees, when turning at angles of more than 80 degrees disconnect the drive to avoid damage.

2. HYDRAULIC REQUIREMENT

Floor chain 0 to 40 litres per minute maximum continuous flow at a maximum continuous pressure of 130 bar pressure.

Slurry Gate 20 Litres per minute to fully open the gate in 30 seconds.

With the machine empty, connect the hoses to the tractor and operate the floor chain (to the rear only) and mark the flow hydraulic hose for future reference, repeat this procedure for the slurry gate.

The bed chain speed can be adjusted by altering the dial on the speed control box that can be located in the tractor cab.

The bed chain can be reversed for 4s, by changing the switch and the speed controller from position 'F' to position 'R'.

SPREADING

Connect the PTO shaft and hydraulic hoses as previously described then check the machines operation before loading. In frosts, free the chain from the floor by running it for one complete revolution to check that there is free movement in all the chain joints.

The floor chain is protected by a 'Factory Set' relief valve. Only 'West' Technicians are authorised to make adjustment to this setting. If the seal tag is removed this will invalidate the West warrantee on the machine.

1. Check that no person is in the spreader working area, for safety 50 metres is recommended because the stones will spread much further than manure.
2. At low engine revs, engage the PTO to start the rear vertical rotors then increase the PTO speed to 1000 rpm.
3. Open the Hydraulic gate, fully open for manure or part open to regulate free flowing materials.
4. Start the floor chain (hydraulic control).
5. Adjust the speed on the floor chain and forward ground speed to give the required spread rate.

Spread width is entirely dependent on the material density, the machine will spread high density manure' (cow manure) up to 12m (40ft) spread width. Low density free flowing materials are more effectively spread by flowing the material onto the lower rotor flails. The material flow and density of spread can be regulated by lowering the hydraulic gate. The floor speed may also require slowing to avoid pressuring the hydraulic gate with the load.

Maintenance

1. PTO SHAFT

Every 8 operating hours lubricate with quality grease, clean and grease before each prolonged period of non-use. Grease the plastic guard tubes in the winter to prevent the P.T.O. shaft freezing.

- 1) PTO SHAFT
- 2) ROTOR AND DRIVESHAFT BEARINGS
- 3) TYRES AND WHEELS
- 4) GEARBOXES
- 5) WHEEL BEARINGS

2. ROTOR AND DRIVE SHAFT BEARINGS

Every eight operating hours, lubricate with quality grease. Note: R.H.P. type bearings should be greased with only 1 or 2 pumps of grease, excessive greasing will force out the rear seals.

3. TYRES AND WHEELS

Check tyre pressures and wheel nuts every eight operating hours.
(See end section for figures).

4. MONTHLY

Check oil level in reduction gearbox and rotor gearboxes.

5. ANNUALLY

- a) Check and adjust wheel bearings.
- b) Fill hub caps with good quality grease before replacing.
- c) Lightly oil brake lever shafts.
- d) Change oil in reduction gearbox and rotor gearboxes.

6. DAILY

Rotor flails to be checked and greased before use. If machine is in prolonged use, then check and grease daily using good quality grease.

7. CHAIN TENSIONING

Frequency as required.

Initially the floor chain will lose its tension relatively quickly due to the initial wear and stretch during bedding in.

Approximate torque 68N/m (50lbft)

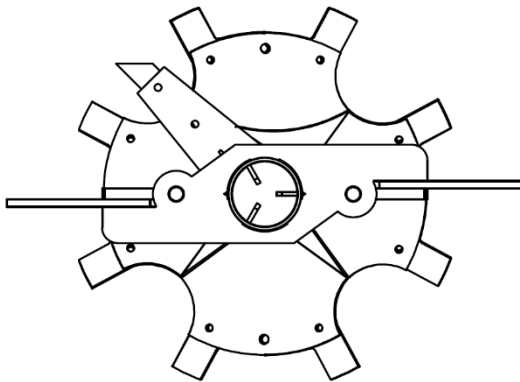
8. ROTORS

Check blades frequently for wear or damage and replace as required to maintain rotor balance using the correct blade bolts (grade 8.8). Remove bearing caps annually and clean and grease the thrust bearing. When re-fitting, lightly load the thrust bearing to pressure rotors onto the rubber coupling.

Check that there is no metal to metal contact between the two rotors, any contact would indicate that the rubber couplings should be replaced.

NOTE: The rear rotors mesh into each other to achieve effective spreading, it is important that the rotors are re-fitted correctly, note and mark their relative positions before removing. If the rotor relative positions are lost, follow this procedure:-

- i. Fit the new rubber coupling into the base of the rotor tubes, lightly greasing the coupling surfaces will assist fitting.



AUGER ASSEMBLY
BASE VIEW

- I. Rotate the gearboxes/drive adaptor plates so that the drive dogs locate in the rubber couplings.
- II. When the rotors are correctly fitted, the lower rotor will mesh.

9. CLEANING

Cold water pressure wash only, hot water wash or steam cleaning may damage the paintwork. Avoid directing a high pressure wash at bearings, bushes or gearbox seals after cleaning grease and lubricate all parts of the machine as previously described.

10. MACHINE LAY-UP

If the machine will be out of use for a prolonged period, check the tyre pressure and grease and lubricate all parts of the machine as previously described. Additionally brush waste oil onto the floor to prevent sticking from rust and frost then run the floor chain to ensure complete lubrication with waste oil. Also pour oil down hydraulic gate guide channels.

11. BRAKE ADJUSTMENT

- 1) Disconnect brake ram from brake lever.
- 2) Slacken lever clamp bolt and remove the spline.
- 3) Rotate lever towards brake ram and re-fit to spline.
- 4) Brake ram on 14m³ to be connected 178mm from cam centre.
Brake ram on 8m³ to be connected 203mm from cam centre.
- 5) Jack wheel clear of the ground and check with the brakes off, the wheel rotates freely.

TYRE/WHEELS: 580/70R38

14m³ Pressure = 4 Bar or 58 psi

8m³ Pressure = 2.4 Bar or 35 psi

RECOMMENDED GEARBOX OIL:

Lodexol 150 or equivalent

CONVEYOR TORQUE

68Nm or 50lbft

WHEEL NUT TORQUES

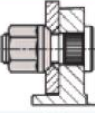
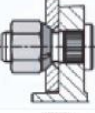
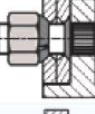
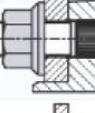
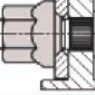
NUT TYPE	Spanner	Wheel stud	Tightening torque	Leverage (*L)	Force (*F)
	mm	mm	Nm	mm	Kg
DIN 	17	M12x1.5	90	300	30
	19	M14x1.5	130	300	40
	24	M18x1.5	270	450	60
Plain nut + washer 	24	M18x1.5	270	450	60
	27	M20x1.5	380	600	60
	30	M22x1.5	510	800	60
"Twin" 	24	M18x1.5	270	450	60
	27	M20x1.5	380	600	60
	30	M22x1.5	510	800	60
"M" 	-	-	-	-	-
	27	M20x1.5	450	800	55
"Bec" 	32	M22x1.5	650	1000	65
	28	M18x1.5	270	450	60
	30	M20x1.5	380	600	60
	32	M22x1.5	510	800	60

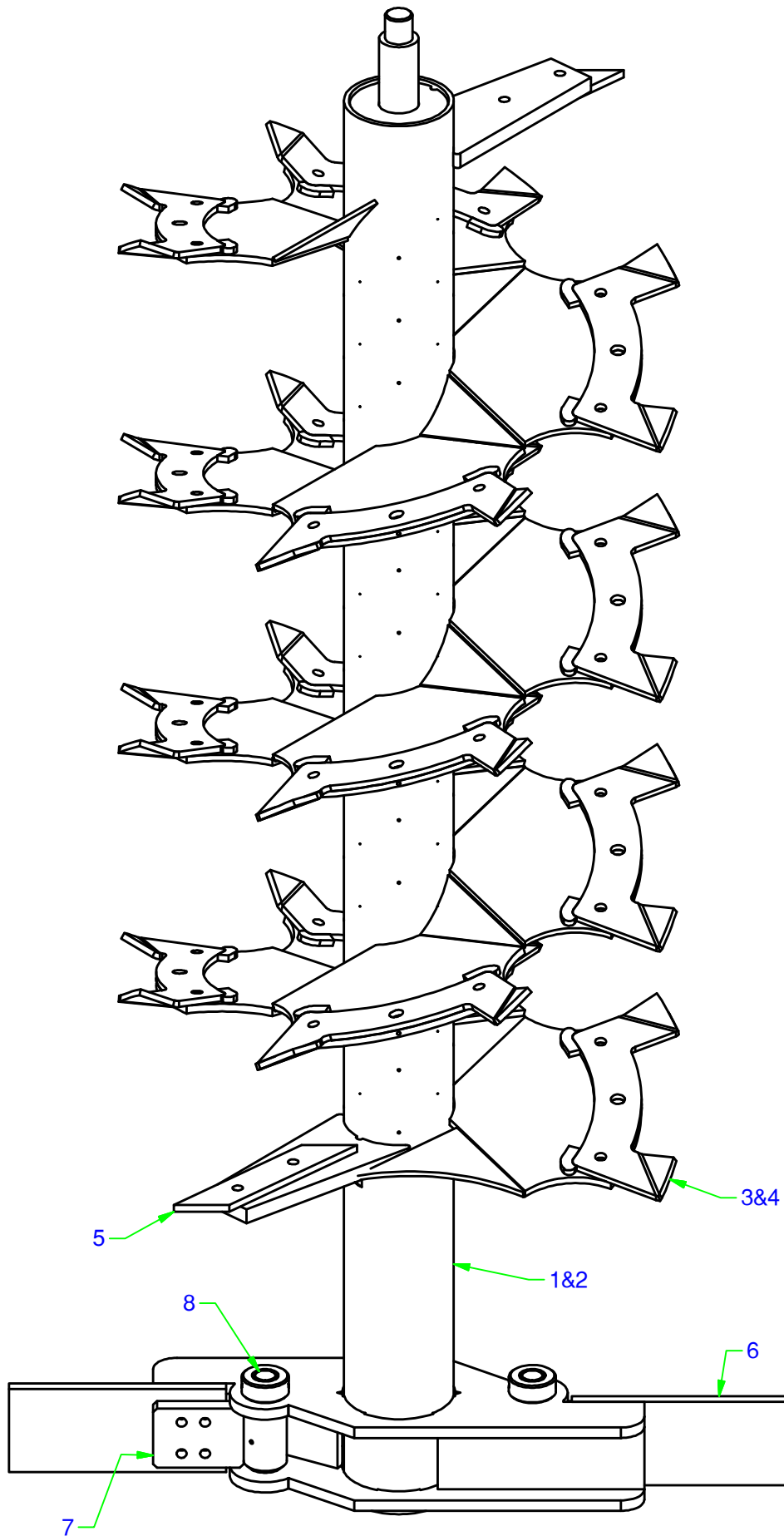
TABLE OF GENERAL TORQUE SETTINGS FOR MOUNTING NUTS AND BOLTS

Diameter/Pitch of thread mm	Material Bolt A 8.8 - Nut A 6S Brunite Zinc Plated		Material Bolt 10.9 - Nut A 8G Brunite Zinc Plated	
	Kgm	Kgm	Kgm	Kgm
M 6	1.2	0.9	1.45	1.35
M 8 x 1.25	2.5	2.1	3.5	2.9
M 8 x 1	2.7	2.3	3.8	3.2
M 10 x 1.5	5	4.1	7.0	5.8
M 10 x 1.25	5.5	4.4	7.5	6.2
M 12 x 1.75	8.6	6.7	12	9.6
M 12 x 1.25	9.7	7.6	13.5	10.8
M 14 x 2	14	10.5	19.5	15.1
M 14 x 1.5	15.3	11.7	21.5	16.8
M 16 x 2	21.5	16.0	30.8	23.1
M 16 x 1.5	23	17.4	32	25.2
M 18 x 2.5	29.5	21.8	41.5	31.5
M 18 x 1.5	33	25.5	47	36.8
M 20 x 2.5	41.5	30.5	58.5	44.4
M 20 x 1.5	46	34.9	66	50.8
M 22 x 2.5	56.5	41.6	80	60.6
M 22 x 1.5	52	46.8	88	68.2
M 24 x 3	72	52.8	100	76.9
M 24 x 2	79	59.1	110	86.1

NB: For torque settings of specific components please refer to the relevant workshop manuals.

Please note all torque settings are quoted for clean, lightly oiled threads.

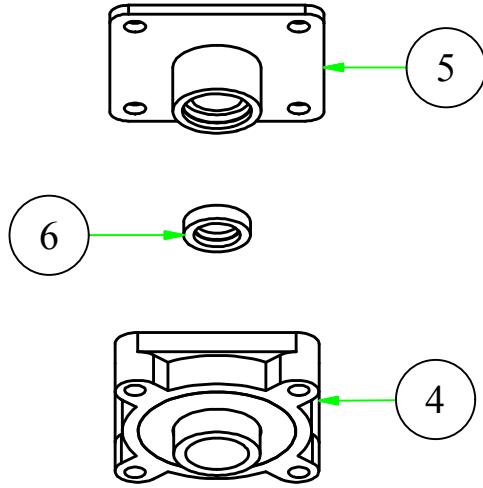
BLANK



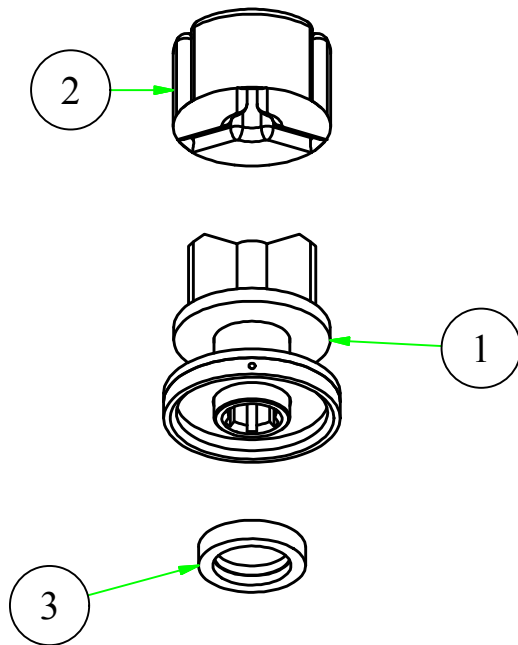
Nearside & Farside Rotor Complete Assy

Item	Qty	14m³ Part No.	8m³ Part No.	Description
8	2	70216700	70216700	Flail Pin
7	2	26545001	26545001	Flail Hinge W/A
6	2	26571500	26571500	Flail
5	2	26071200	26071200	Fixed Blade
4	12		70216600	Farside Hardox Blade
4	15	70216600		Farside Hardox Blade
3	12		70208300	Nearside Hardox Blade
3	15	70208300		Nearside Hardox Blade
2	1	70251900	74251900	Farside Auger W/A
1	1	70251700	74251700	Nearside Auger W/A

Rotor Top

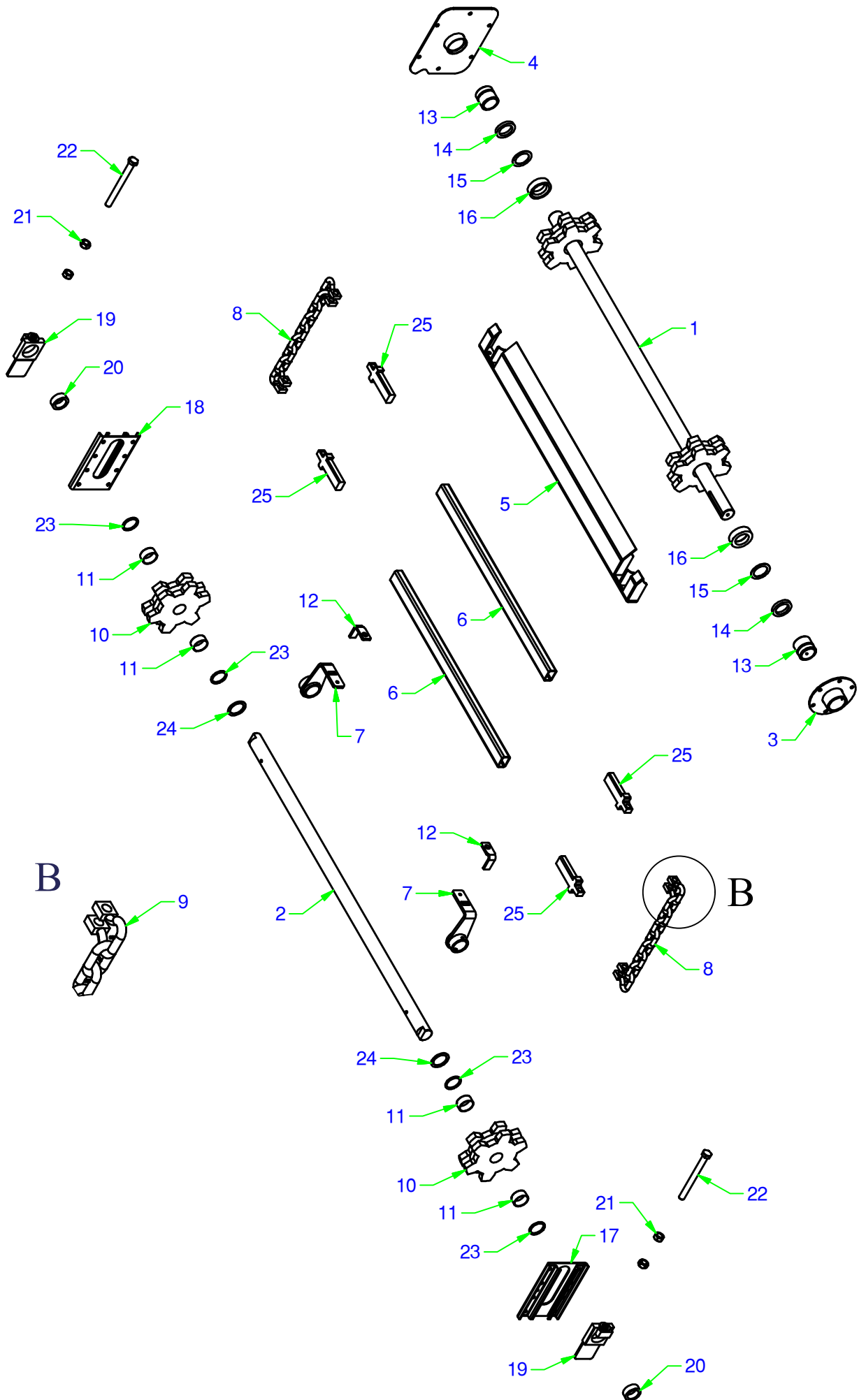


Rotor Bottom



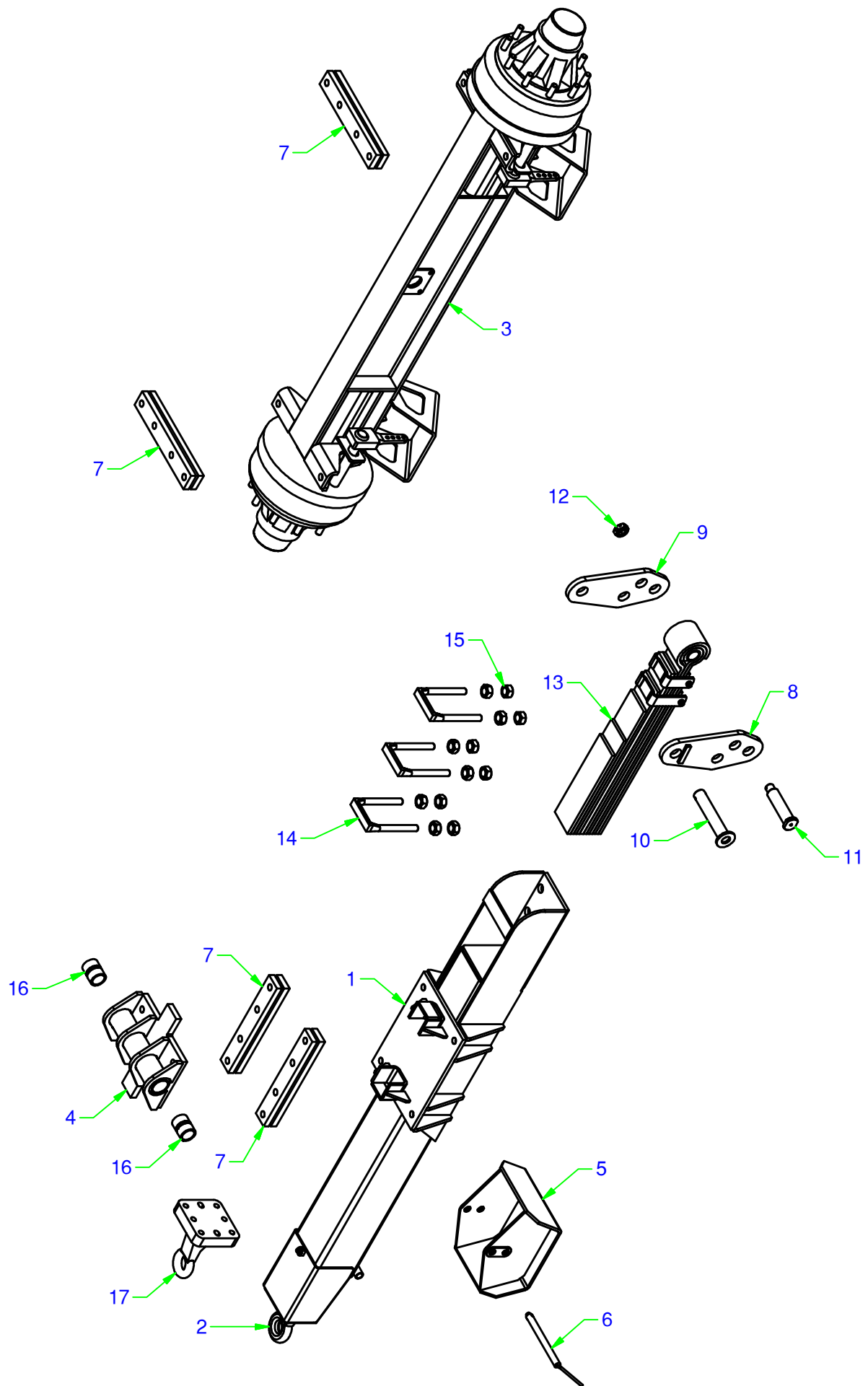
Rotor Mounting and Brgs Details

Item	Part No.	Description
1	26267000	Drive Adaptor W/Assy
2	26071900	Rubber Coupling
3	990127	Btm Thrust Brg
4	990116	Top Flange Brg
5	26072301	Thrust Bearing W/Assy
6	990117	Top Thrust Brg



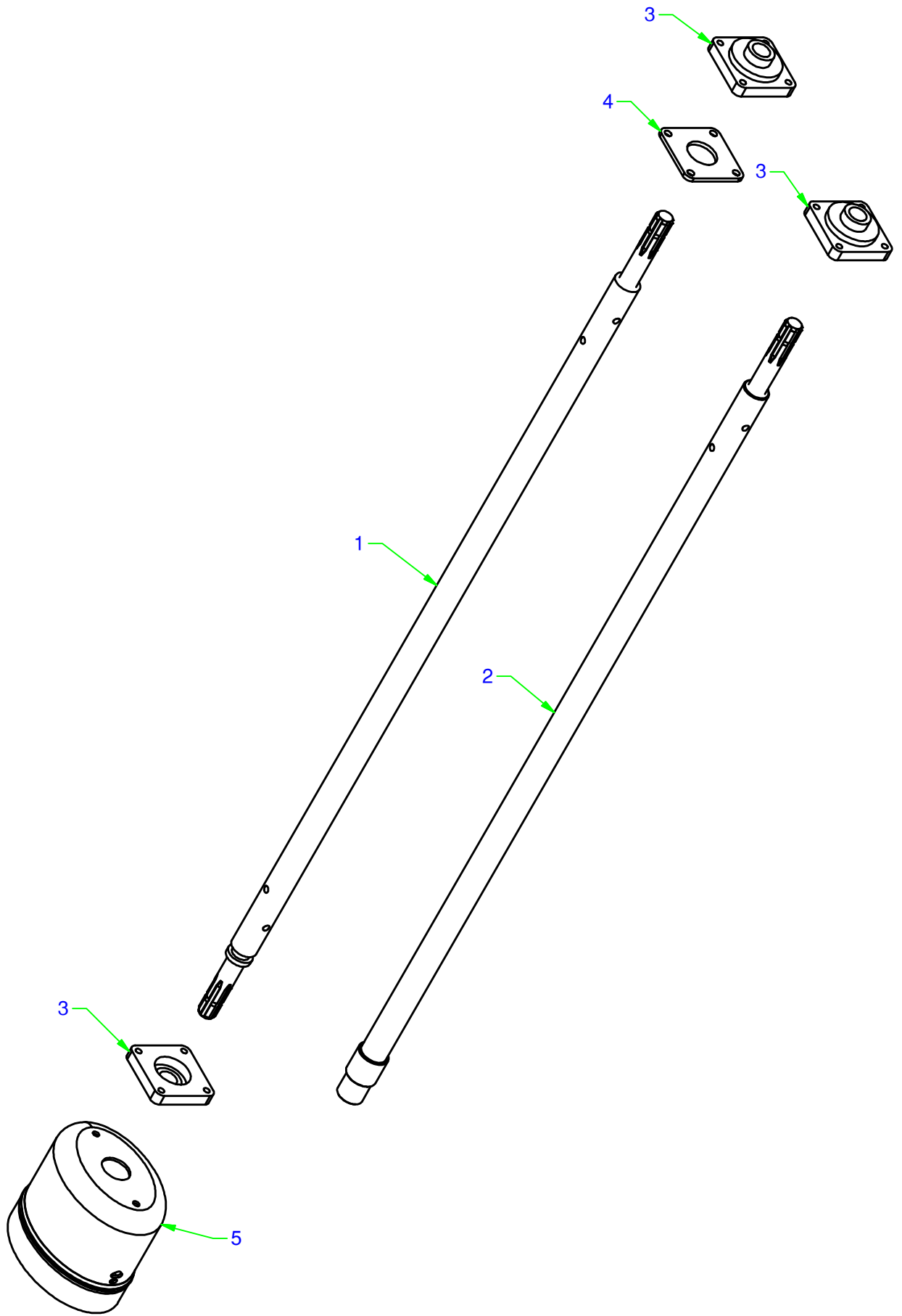
Conveyor Components

Item	Description	14m³ Part No.	8m³ Part No.
1	Floor Drive Shaft W/A	70252901	74252901
2	Front Conveyor Shaft	70212201	70212201
3	LH Brg Housing W/A	70252600	70252600
4	RH Brg Housing W/A	70252800	70252800
5	Floor Extension W/A	70253001	74253000
6	Conveyor Bar W/A	70212301	74212300
7	Sprocket Raker W/A	70254502	74254500
8	Conveyor Chain	70901900	74901900
9	Paddles Shackle Connector	70902000	74902000
10	Front Sprocket	70901700	74901700
11	Iglidur G Polymer Brg	70900402	70900402
12	Raker Plate	70214801	74214800
13	Nylon Bush	70900300	70900300
14	Felt Seal	26082301	26082301
15	Retaining Washer	26082002	26082002
16	Nylon Spacer	70215600	74215600
17	Tension Block Guide LH W/A	70254100	70254100
18	Tension Block Guide RH W/A	70254200	70254200
19	Tensioner Block W/A	70254300	70254300
20	Nylon Tensioner Block Bush	70213001	70213001
21	M24 Lock Nut		
22	M24 x 250 Adjuster Bolt		
23	Nylon Front Shaft Spacer	70214702	70214702
24	Front Shaft Ring	70217300	70217300
25	Slip Plate	70217600	74217600



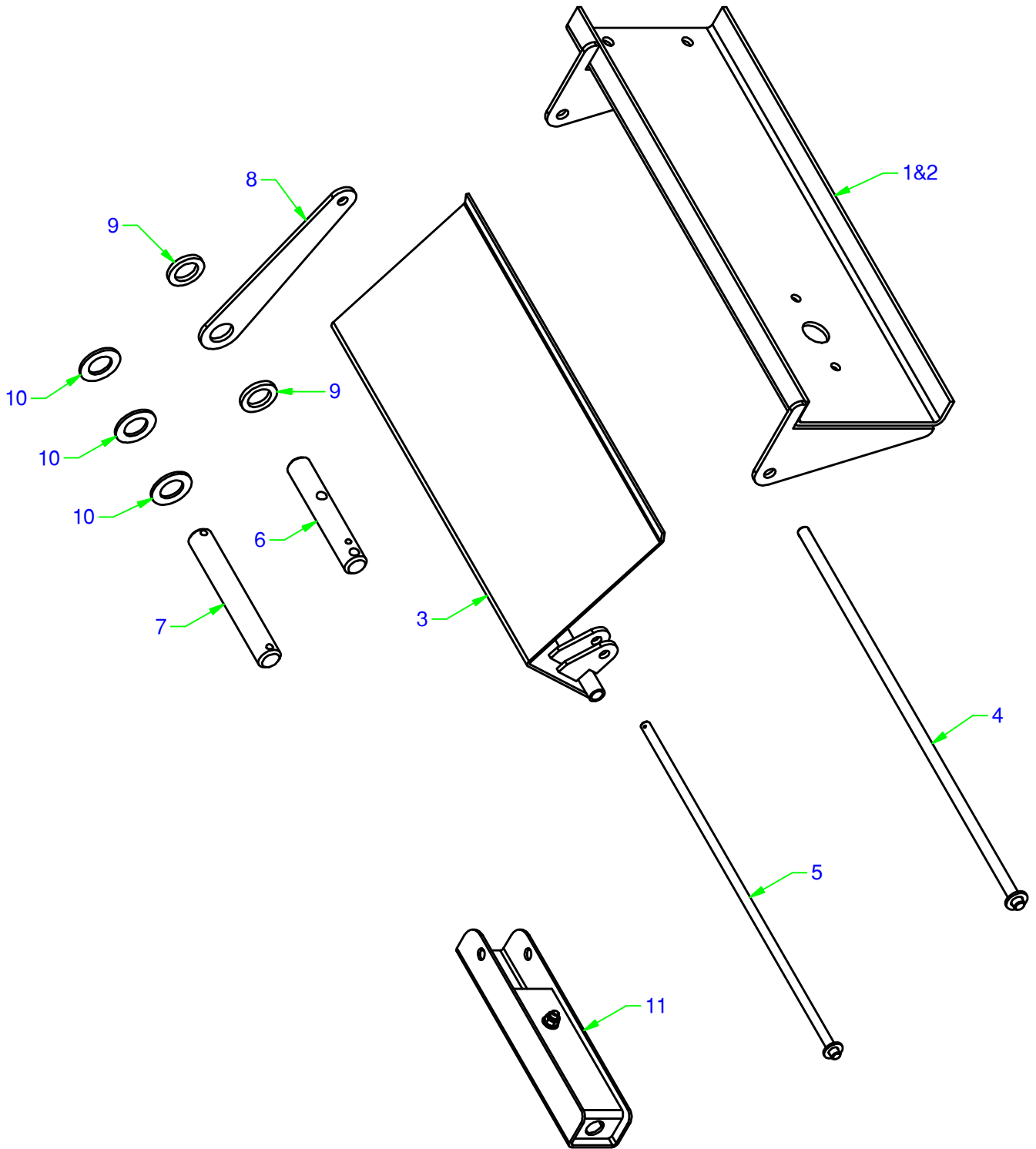
Drawbar & Axle

Item	Description	14m³ Part No.	8m³ Part No.
1	Drawbar W/A	70250700	N/A
2	Swivel Hitch	70900200	N/A
3	Axle W/A	70250600	74250600
4	Drawbar Rocker W/A	70250900	N/A
5	Skid W/A	70251100	74251100
6	Skid Pin W/A	70251200	74251200
7	Dummy Weigh Cell W/A	70251300	N/A
8	Drawbar Hanger Plate W/A	70250500	N/A
9	Drawbar Hanger Plate	70204100	N/A
10	Drawbar Hanger Pin	70251000	N/A
11 & 12	Spring Pin & Castle Nut	699010D	N/A
13	Drawbar Spring	699010A	N/A
14	U Bolt	699010B	N/A
15	U Bolt Nuts	699010C	N/A
16	Nylon Drawbar Pivot Brg	70900500	N/A
17	Bolt On Hitch	N/A	



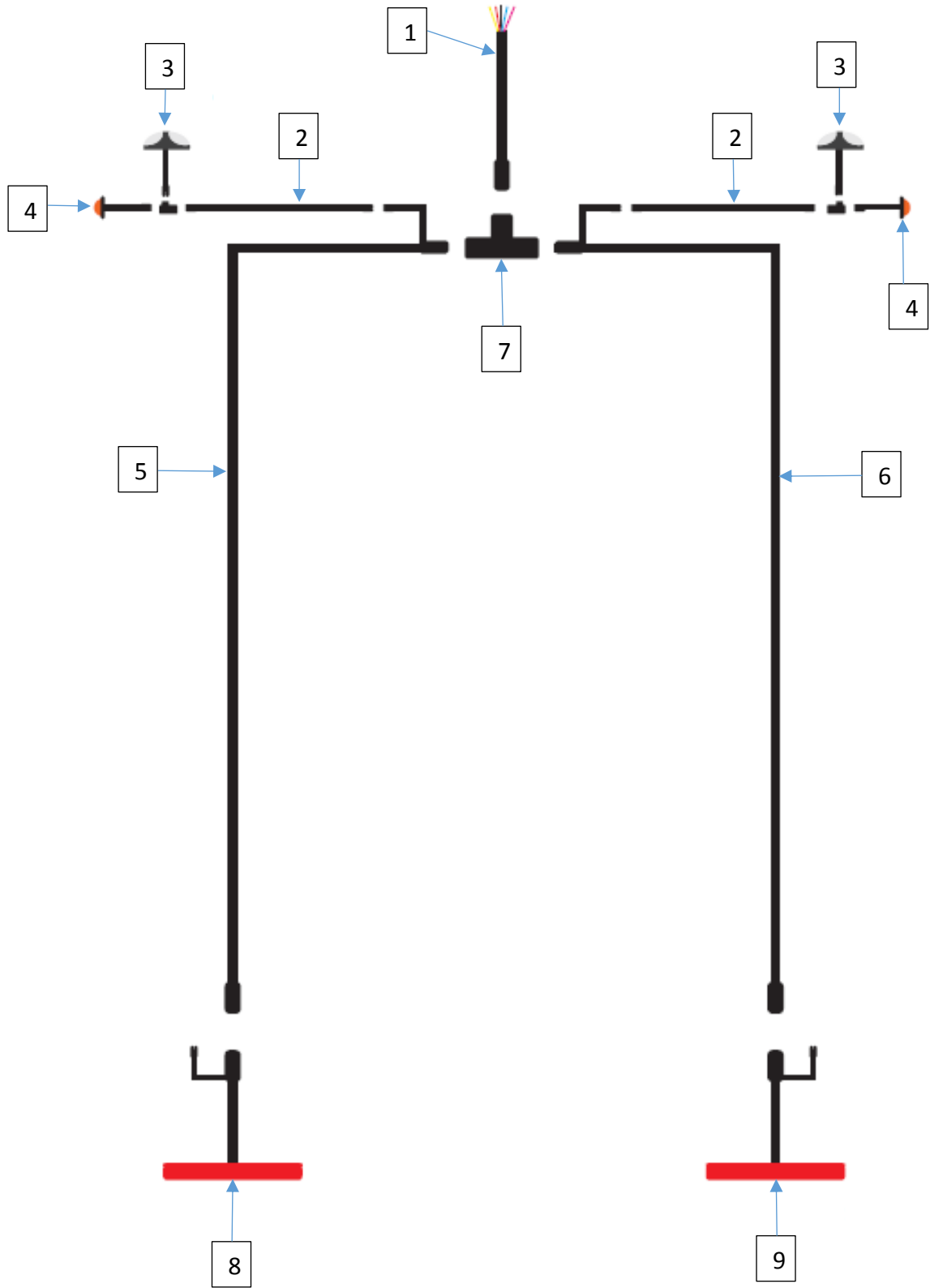
Driveline Components

Item	Description	14m³ Part No.	8m³ Part No.
1	Front Driveline Shaft W/A	70252300	70252300
2	Rear Driveline Shaft W/A	70252400	74252400
3	Flange Brg	99010800	99010800
4	Brg Flange Plate	70204500	70204500
5	Guard Cone c/w Extension	70902100	70902100



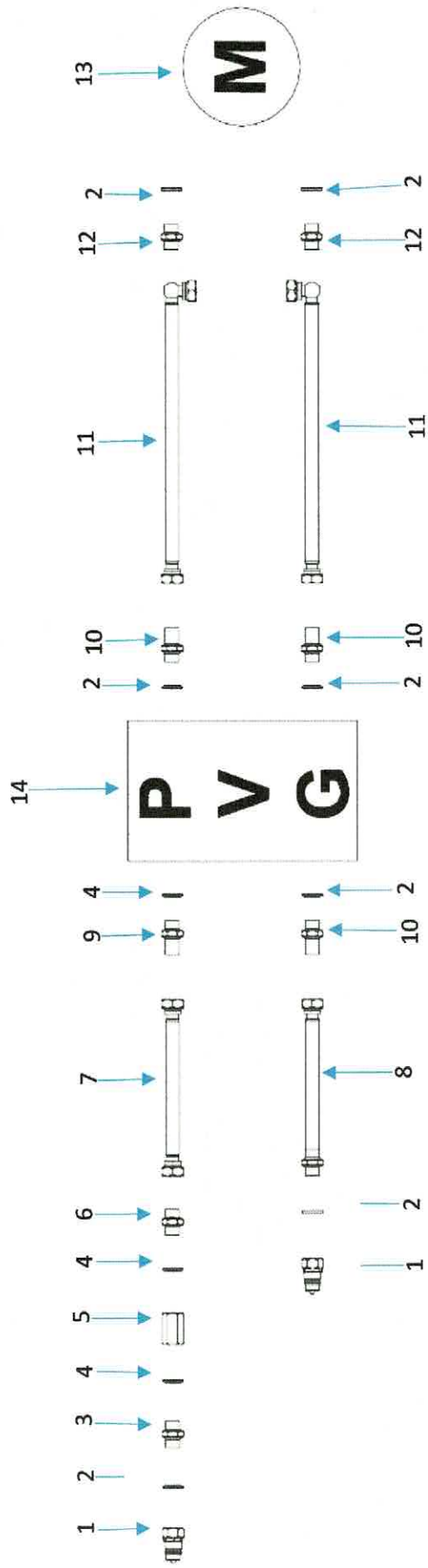
Light Brkts & Door Pins

Item	Description	14m³ Part No.	8m³ Part No.
1	LH Lamp Brkt W/A	70254800	74254800
2	RH Lamp Brkt W/A	70255200	74255200
3	Lamp Cover W/A	70254700	74254700
4	Lamp Pin 12mm W/A	70254900	74254900
5	Lamp Pin 10mm W/A	70255000	74255000
6	Bottom Cyl Pin	70214500	70214500
7	Lift Pin	70215300	70215300
8	Lamp Connector Plate	70214300	70214300
9	Cyl Pin Spacer	70214400	70214400
10	Washer	26111500	26111500
11	Front Light Brkt Assy	70255800	70255800



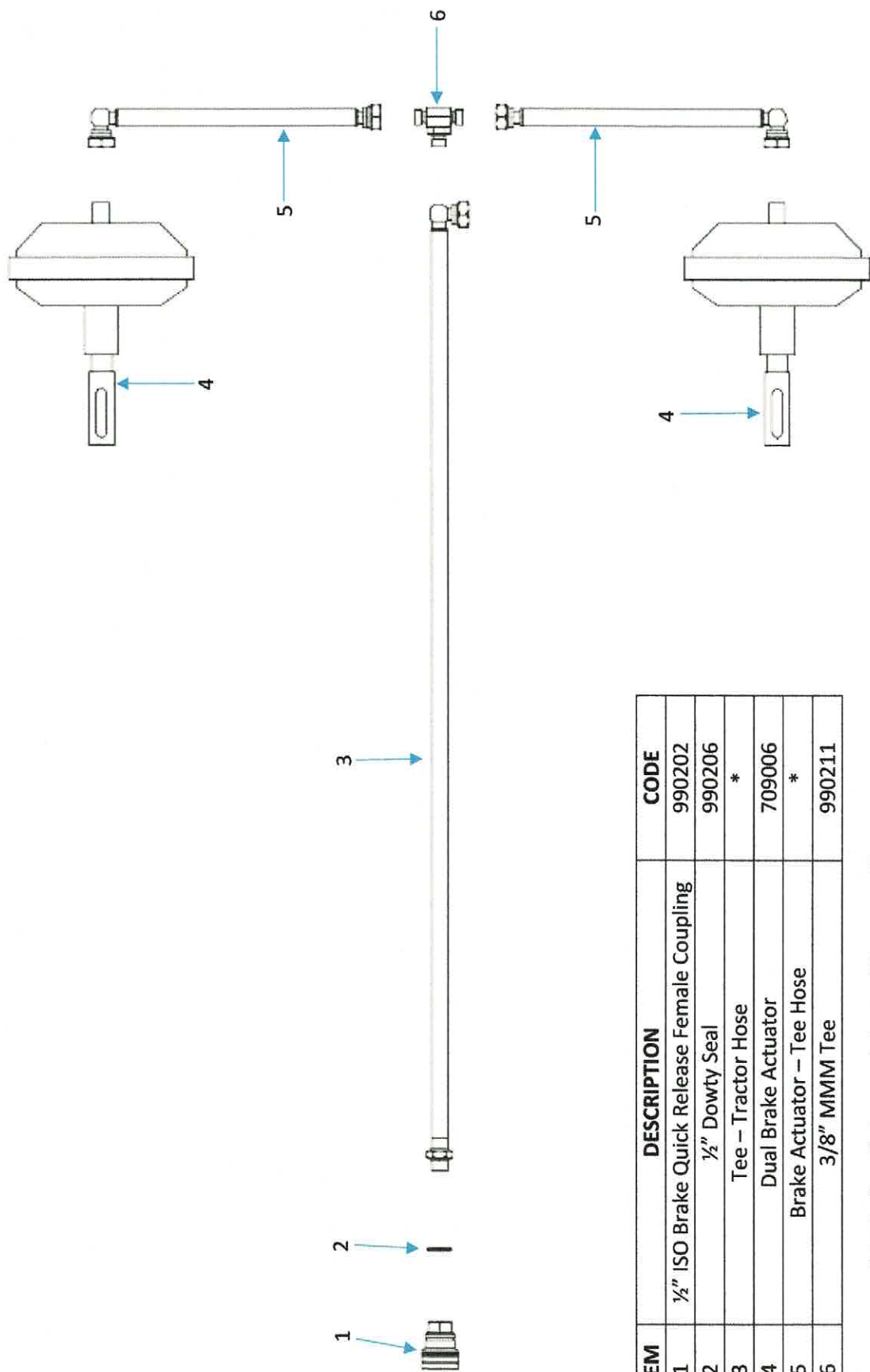
Light Circuit Details

Item	Description	Qty/ Assy	Part No.
1	Main Chassis Cable	1	IND-8P2.72
2	2mt Twin Core Connecting Lead	2	2C200B
3	White Front Outline Marker	2	37WM2P
4	Amber Side Marker	2	181AME2P
5	7mt Lamp to Lamp Cable (left)	1	IND-6PICL7.0
6	7mt Lamp to Lamp Cable (right)	1	IND6PICR7.0
8	Left Full Function Combination Lamp	1	EU200-6P1.2L
9	Right Full Function Combination Lamp	1	EU200-6P1.2R
10	6 Way T Piece Connector	1	8PTP



ITEM	DESCRIPTION	CODE
1	1/2" Male Quick Release Coupling	990201
2	1/2" Dowty Seal	990206
3	1/2" - 3/4" MM Adaptor	990208
4	3/4" Dowty Seal	990205
5	3/4" In Line None Return Valve	990233
6	3/4" MM Adaptor	990234
7	3/4" PVG - Tractor Hose	*
8	1/2" PVG - Tractor Hose	*
9	3/4" Bulkhead Adaptor	990235
10	1/2" Bulkhead Adaptor	990324
11	Motor - PVG Hose	*
12	1/2" MM Adaptor	990209
13	Hydraulic Motor	709009
14	Proportional Valve Assembly	990231

***For hydraulic hoses state machine capacity**

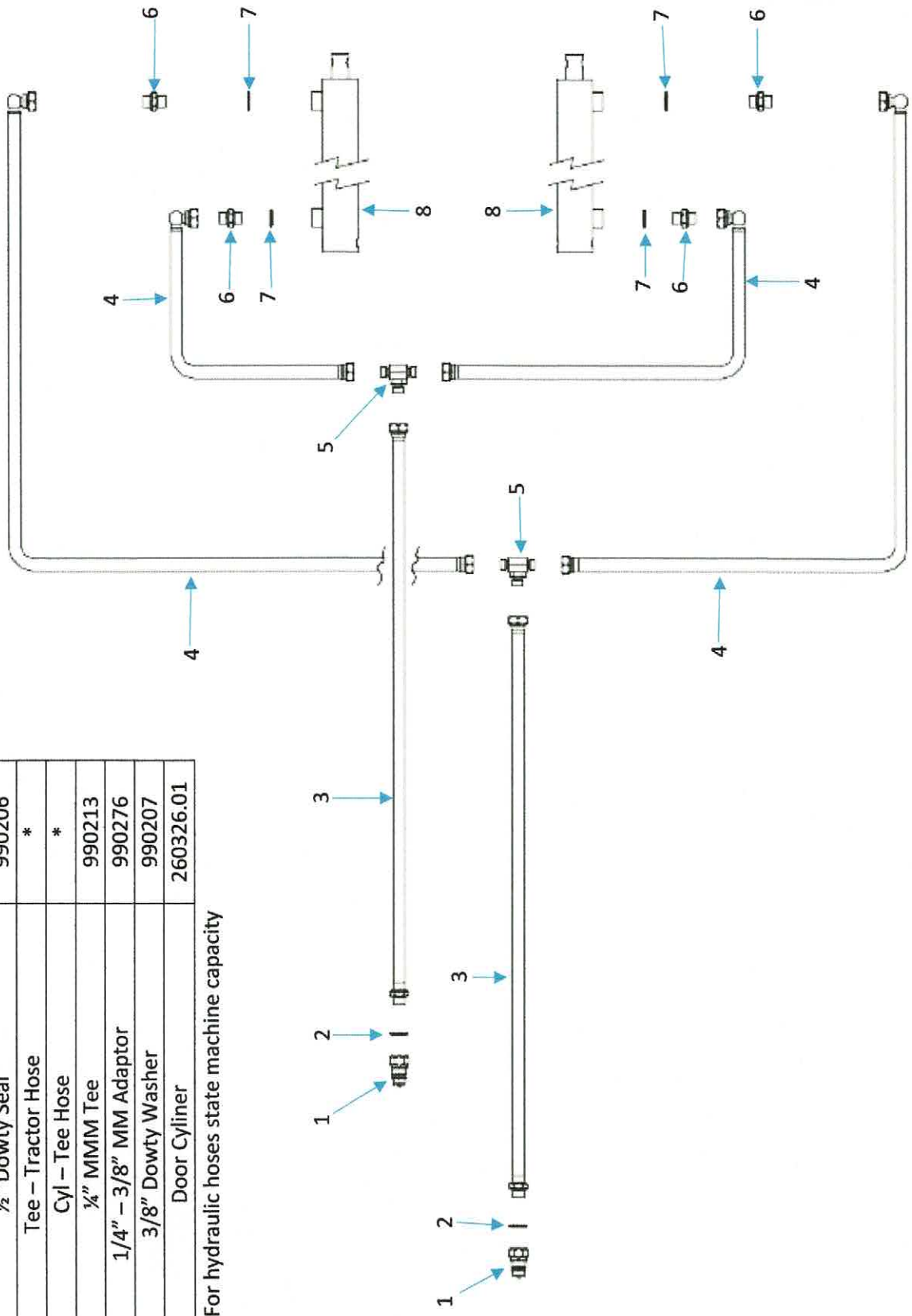


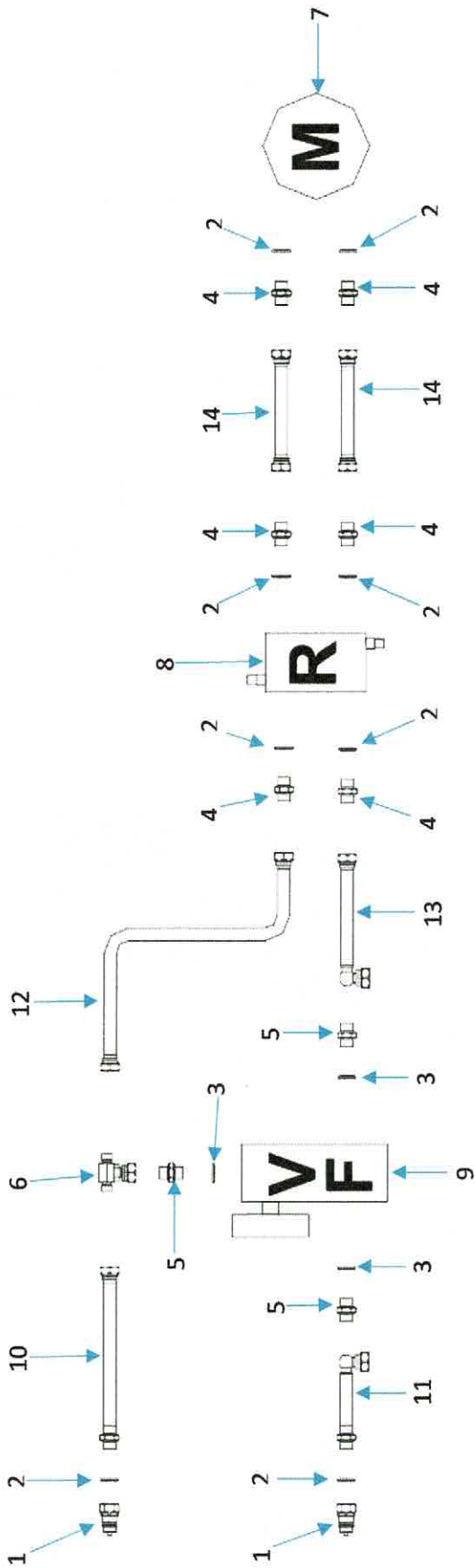
ITEM	DESCRIPTION	CODE
1	1/2" ISO Brake Quick Release Female Coupling	990202
2	1/2" Dowty Seal	990206
3	Tee - Tractor Hose	*
4	Dual Brake Actuator	709006
5	Brake Actuator - Tee Hose	*
6	3/8" MMM Tee	990211

***For hydraulic hoses state machine capacity**

ITEM	DESCRIPTION	CODE
1	1/2" Male Quick Release Coupling	990201
2	1/2" Dowty Seal	990206
3	Tee - Tractor Hose	*
4	Cyl - Tee Hose	*
5	1/4" MMM Tee	990213
6	1/4" - 3/8" MM Adaptor	990276
7	3/8" Dowty Washer	990207
8	Door Cyliner	260326.01

*For hydraulic hoses state machine capacity

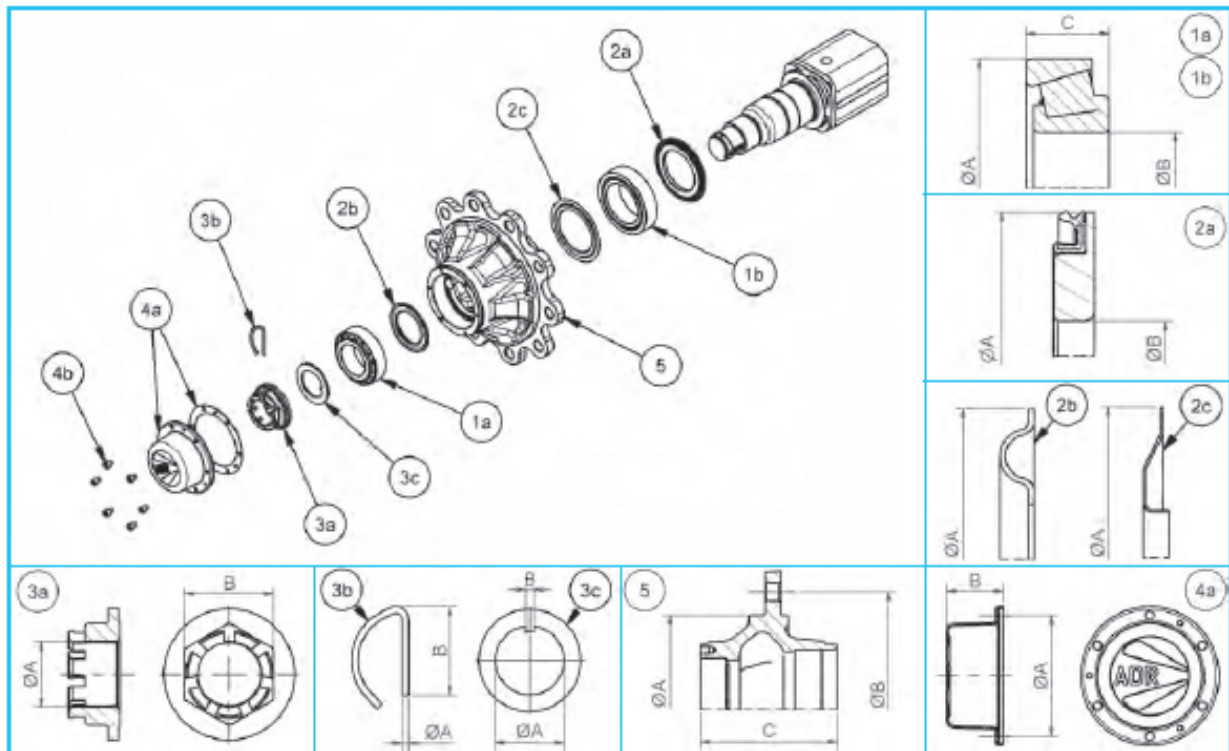




ITEM	DESCRIPTION	CODE
1	1/2" Male Quick Release Coupling	990201
2	1/2" Dowty Seal	990206
3	3/4" Dowty Seal	990205
4	1/2" MM Adaptor	990209
5	1/2" - 3/4" MM Adaptor	990208
6	1/2"M - 1/2"M - 3/4"FM TEE	990278
7	Hydraulic Motor	709009
8	Dual Line Relief Valve	
9	Variable Priority Flow Divider	
10	1/2" Tractor - Tee Hose	
11	1/2" Tractor - VF Valve Hose	
12	1/2" Tee - Relief Hose	
13	1/2" VF - Relief Hose	
14	1/2" Relief - Motor Hose	

***For hydraulic hoses state machine capacity**

14m³

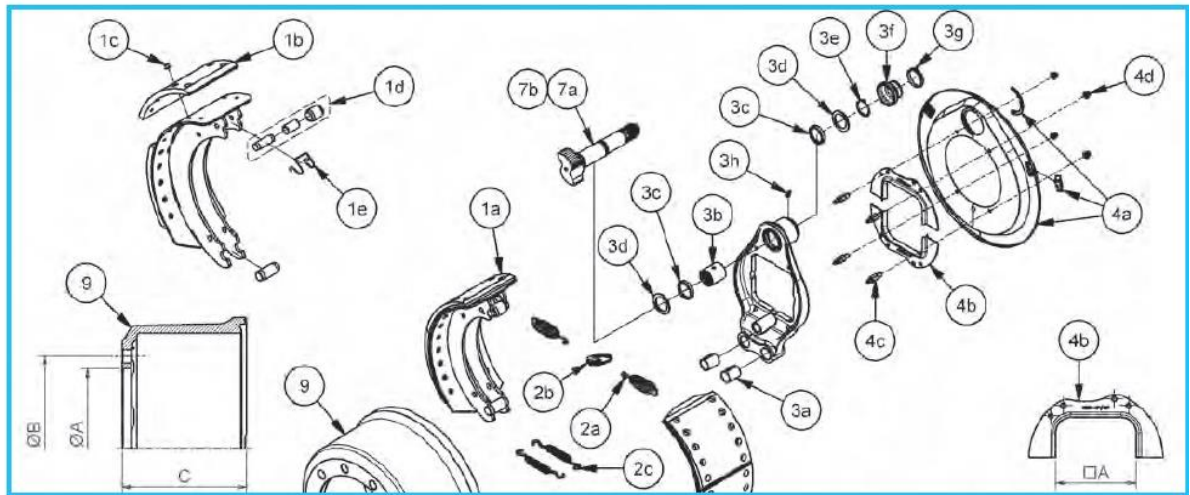


Item	Description	Code	A	B	C	Qty	Kit Code
1a	Bearing 33118	59133118	150	90	45	1	9RCZA
1b	Bearing 33122	59133122	180	110	56	1	9RCZA
2a	Oil Seal	5441801	180	112	-	1	9RNZA
2b	Nilos 33118	5531391	139	-	-	1	9RNZA
2c	Nilos 33122	5511801	180	-	-	1	9RNZA
3a	Crown Nut	57570D2	M70x2.0	90	-	2	9RP002
3b	Spring Pin	58214	7	76	-	2	9RP002
3c	Lock Washer	57B7002	70.5	8	-	2	9RP002
4a	Cap with Gasket	56115003	164	87	-	2	9RTZA01
4b	Screw M8 x 1.25	96308A0101	-	-	-	12	9RTZA01
5	Hub 10 holes for M22 x 1.5	61L1ZA001	280	335	247	1	61L1ZA001

WHEEL STUDS & NUTS COME IN PACKS OF 10

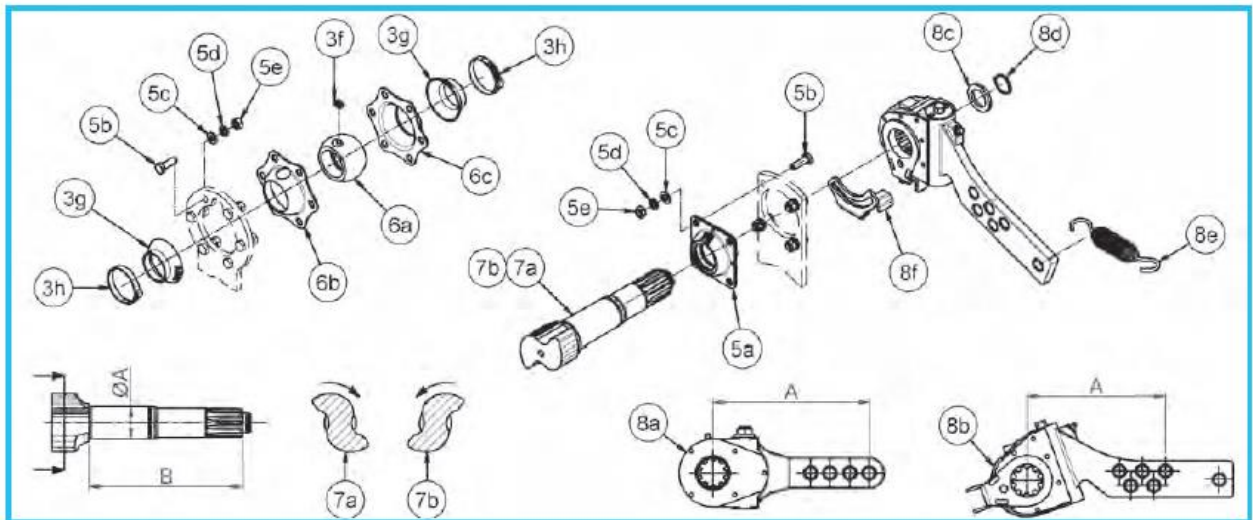
WHEEL STUD KIT IS 9RC22L2-10

WHEEL NUT KIT IS 9RD22BEC-10



Item	Description	Code	A	B	C	Qty	Kit Code	
1a	Brake Shoe Complete	732WC03	-	-	-	2	9RE0106	
2a	Spring Ø5.2 L106	738128	-	-	-	2		
2b	Twist Lock	736XC02	-	-	-	1		
2c	Spring Ø3.0 L138	738129	-	-	-	2		
3a	Bush Ø28/32 L40	771008	-	-	-	2	9RH0046	
1b	Brake Lining	734WC02	-	-	-	4		
2a	Spring Ø5.2 L106	738128	-	-	-	2		
2b	Twist Lock	736XC02	-	-	-	1		
2c	Spring Ø3.0 L138	738129	-	-	-	2	9RK0016	
1c	Rivet	96701	-	-	-	34		
2a	Spring Ø5.2 L106	738128	-	-	-	2		
2b	Twist Lock	736XC02	-	-	-	1		
2c	Spring Ø3.0 L138	738129	-	-	-	2	9RE0084	
1d	Roll Ø32	73BVC01	-	-	-	2		
1e	Spring	738127	-	-	-	2		
3a	Bush Ø28/32 L40	771008	-	-	-	2		9RL0026
3b	Camshaft Bush Ø42	771007	-	-	-	1		
3c	Seal Ø42	5490501	-	-	-	2		
3d	Washer Ø42	73G01	-	-	-	2		
3e	Retaining Ring Ø42	58514	-	-	-	1		
3f	Rubber Cover	53A09	-	-	-	1		
3g	Clamp	98E01	-	-	-	1	9RM056	
3h	Grease Nipple M8 x 1.25	98608A1	-	-	-	1		
4a	Protection Plate with Rubber Caps	743WC0002	-	-	-	1		
4b	Square Seal	747A542	150	-	-	2		
4c	Spacer L54	57708A6	-	-	-	4	9RL0026	
4d	Nut M8 x 1.25	97708A1	-	-	-	4		
9	Drum 8 holes for M20X1.5	66LWA0801	Ø220	Ø275	178	1		66LWA0801
	Drum 10 holes for M22X1.5	66LWA1005	Ø280	Ø335	180	1		66LWA1005

14m³

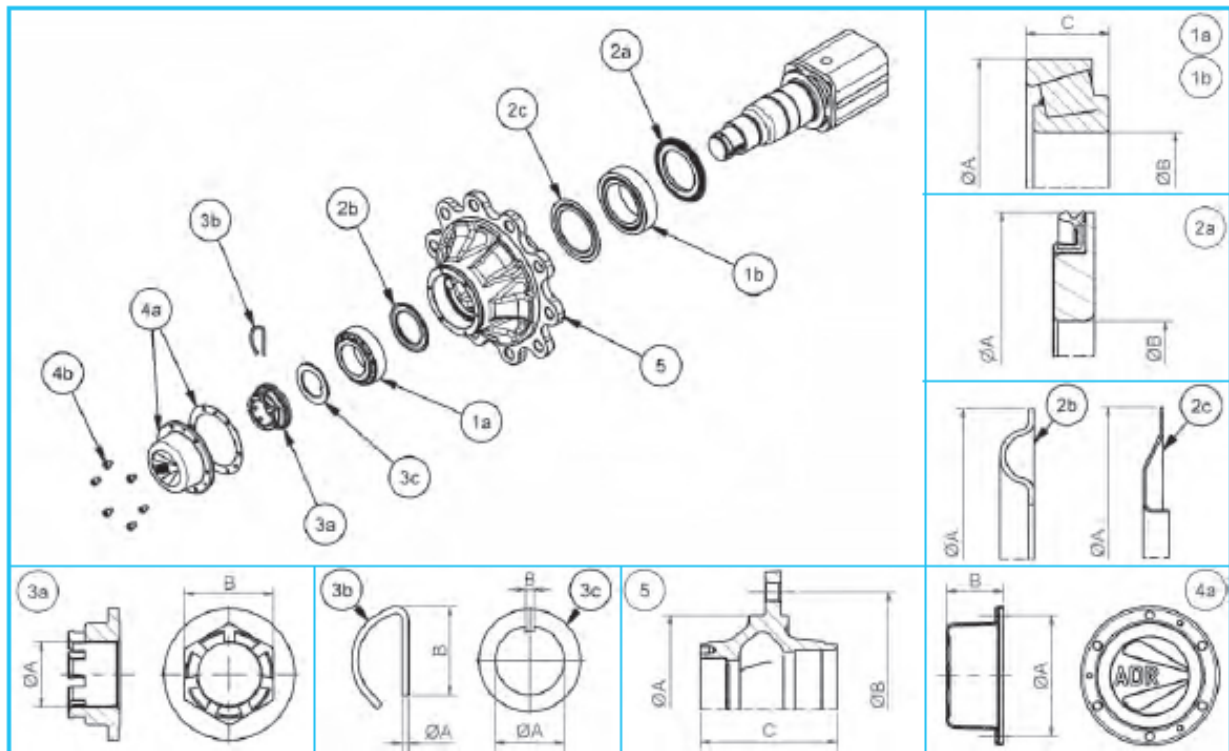


Item	Description	Code	A	B	C	Qty	Kit Code
5a	Camshaft Bush Assembled	74417U01	-	-	-	1	9RL010
5b	Screw M8 x 1.25 L25	96108A0251	-	-	-	4	
5c	Washer Ø8	9810081	-	-	-	4	
5d	Elastic Washer	9830081	-	-	-	4	
5e	Nut M8 x 1.25	97108A1	-	-	-	4	
6a	Camshaft Bush Ø39	772007	-	-	-	1	(2)9RL001
6b	Casing	7480401	-	-	-	1	
6c	Casing	7480402	-	-	-	1	
6d	Rubber Cover	56A10	-	-	-	2	
3g	Clamp	98E01	-	-	-	2	
3h	Grease Nipple M8 x 1.25	98608A1	-	-	-	1	
5b	Screw M8 x 1.25 L25	96108A0251	-	-	-	6	
5c	Washer Ø8	9810081	-	-	-	6	
5d	Elastic Washer Ø8	9830081	-	-	-	6	
5e	Nut M8 x 1.25	97108A1	-	-	-	6	
7a	Right Camshaft	75P4062...	Ø42	(1) ≤300	-	1	75P4062...
	Right Camshaft	75P4063...	Ø42	(1) >300	-	1	75P4063...
7b	Left Camshaft	75Q4062...	Ø42	(1) ≤300	-	1	75Q4062...
	Left Camshaft	75Q4063...	Ø42	(1) >300	-	1	75Q4063...
8a	Slack Adjuster	7621603	203	-	-	1	9RR0010
8b	Washer Ø26	9812601	-	-	-	1	
8d	Retaining Ring	58508	-	-	-	1	
8e	Spring Ø3.5 L173	738201	-	-	-	1	

(1)-From 200mm to 300mm step 25mm. From 300mm to 1200mm step 50mm

(2)-For axles produced till 2013

8m³



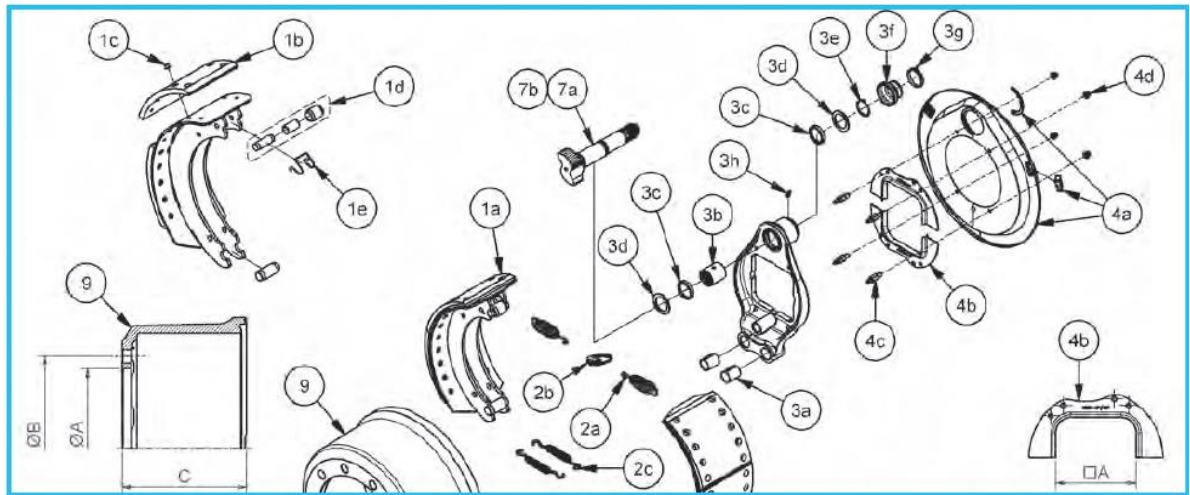
Item	Description	Code	A	B	C	Qty	Kit Code
1a	Bearing 33215	59133215	130	75	41	1	9RCVF
1b	Bearing 33020	59133020	150	100	39	1	
2a	Oil Seal	5441505	150	102	-	1	9RNVF
2b	Nilos 33215	5531191	119	-	-	1	
2c	Nilos 33020	5511501	150	-	-	1	
3a	Crown Nut	57570D1	M70X2.0	90	-	2	*9RDF7090
3b	Spring Pin	58207	7	106	-	2	
3a	Crown Nut	57570D2	70.5X2.0	90	-	2	9RP002
3b	Spring Pin	58214	7	76	-	2	
3c	Lock Washer	57B7002	70.5	8	-	2	
4a	Cap With Gasket	56113018	144	80	-	2	9RT130L
4b	Screw M8 X 1.25	96308A0101	-	-	-	12	
5	Hub 10 holes for M22 X 1.5	61L1VI001	280	335	204	1	61L1VI001

*For axles produced till 2013, without lock washer

WHEEL STUDS & NUTS COME IN PACKS OF 10

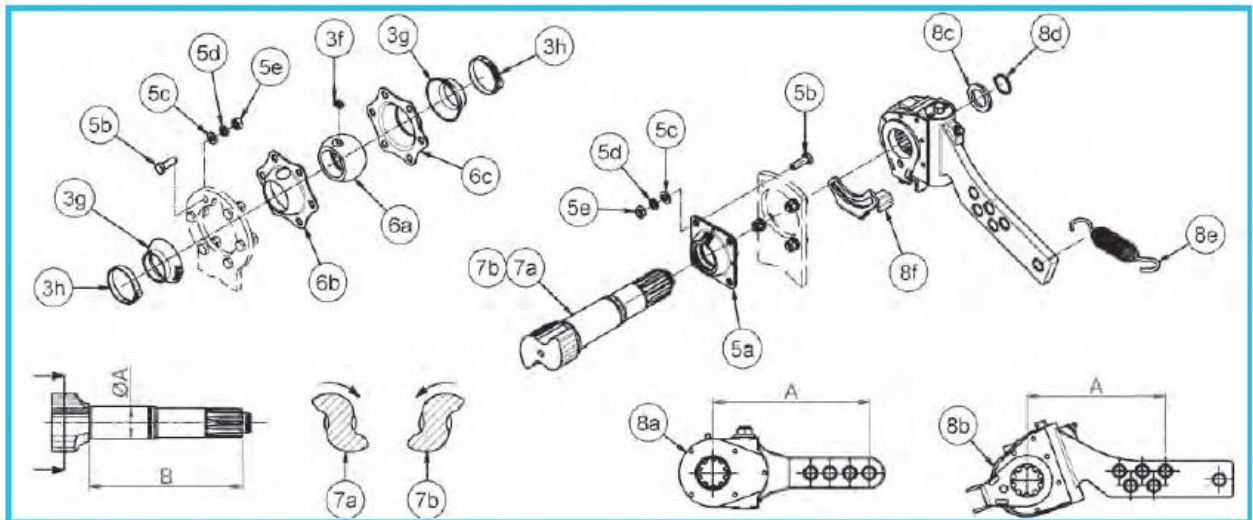
WHEEL STUD KIT IS 9RC22L2-10

WHEEL NUT KIT IS 9RD22BEC-10



Item	Description	Code	A	B	C	Qty	Kit Code
1a	Brake Shoe Complete	732WC03	-	-	-	2	9RE0092
2a	Spring Ø5.2 L106	738128	-	-	-	2	
2b	Twist Lock	736XC02	-	-	-	1	
2c	Spring Ø3.0 L138	738129	-	-	-	2	
3a	Bush Ø28/32 L40	771008	-	-	-	2	9RH0034
1b	Brake Lining	734WC02	-	-	-	4	
2a	Spring Ø5.2 L106	738128	-	-	-	2	
2b	Twist Lock	736XC02	-	-	-	1	
2c	Spring Ø3.0 L138	738129	-	-	-	2	
1c	Rivet	96701	-	-	-	34	9RE0084
2a	Spring Ø5.2 L106	738128	-	-	-	2	
2b	Twist Lock	736XC02	-	-	-	1	
2c	Spring Ø3.0 L138	738129	-	-	-	2	
1d	Roll Ø32	73BVC01	-	-	-	2	9RL0026
1e	Spring	738127	-	-	-	2	
3a	Bush Ø28/32 L40	771008	-	-	-	2	
3b	Camshaft Bush Ø42	771007	-	-	-	1	
3c	Seal Ø42	5490501	-	-	-	2	
3d	Washer Ø42	73G01	-	-	-	2	
3e	Retaining Ring Ø42	58514	-	-	-	1	
3f	Rubber Cover	53A11	-	-	-	1	
3g	Clamp	98E01	-	-	-	1	
3h	Grease Nipple M8 x 1.25	98608A1	-	-	-	1	9RM042
4a	Protection Plate with Rubber Caps	743WC0006	-	-	-	1	
4b	Square Seal	747A342	130	-	-	2	
4c	Spacer L51	57708A1	-	-	-	4	
4d	Nut M8 x 1.25	97708A1	-	-	-	4	66LVA1006
9	Drum 10 holes for M22X1.5	66LVA1006	280	335	165	1	

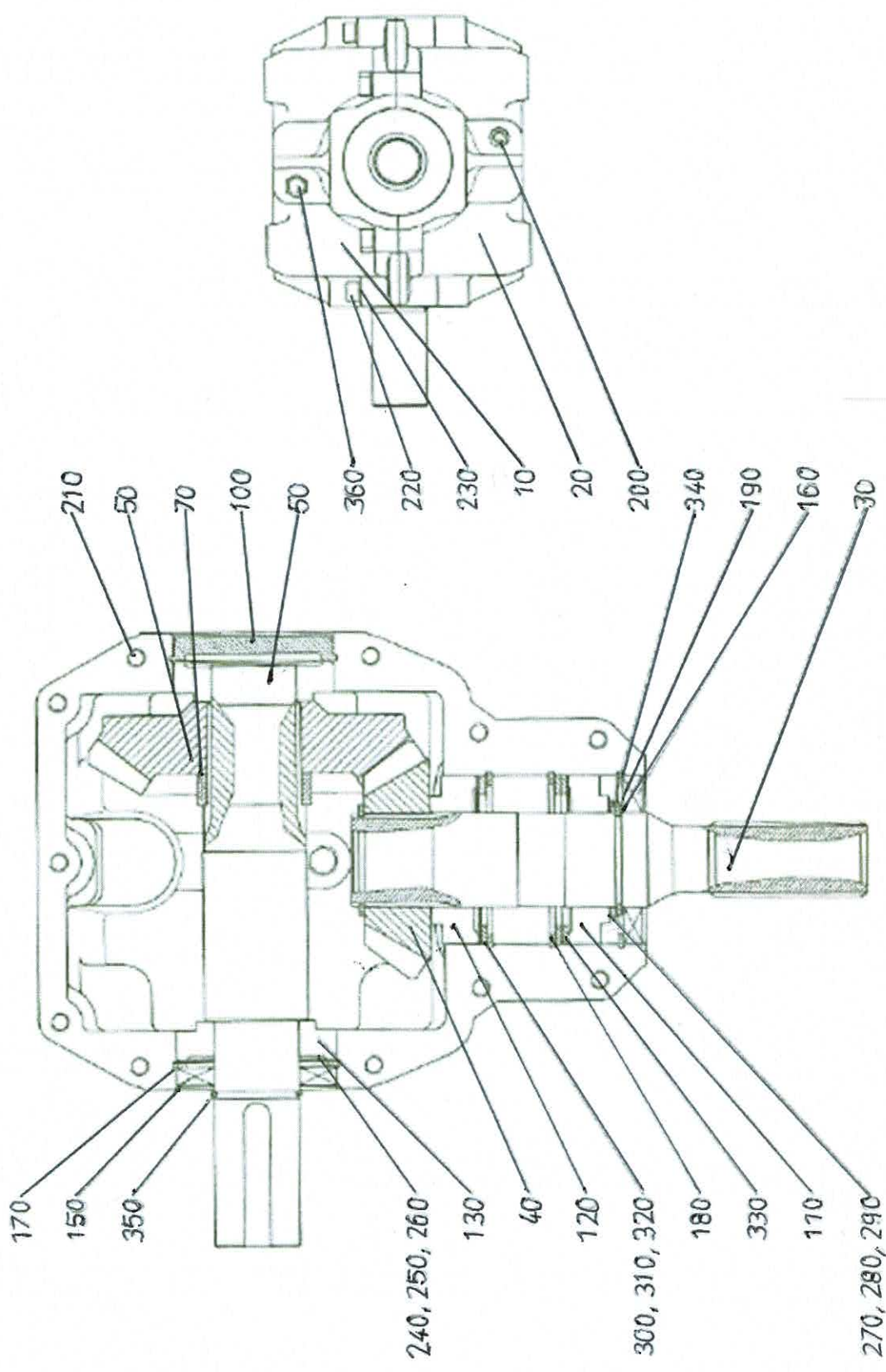
8m³



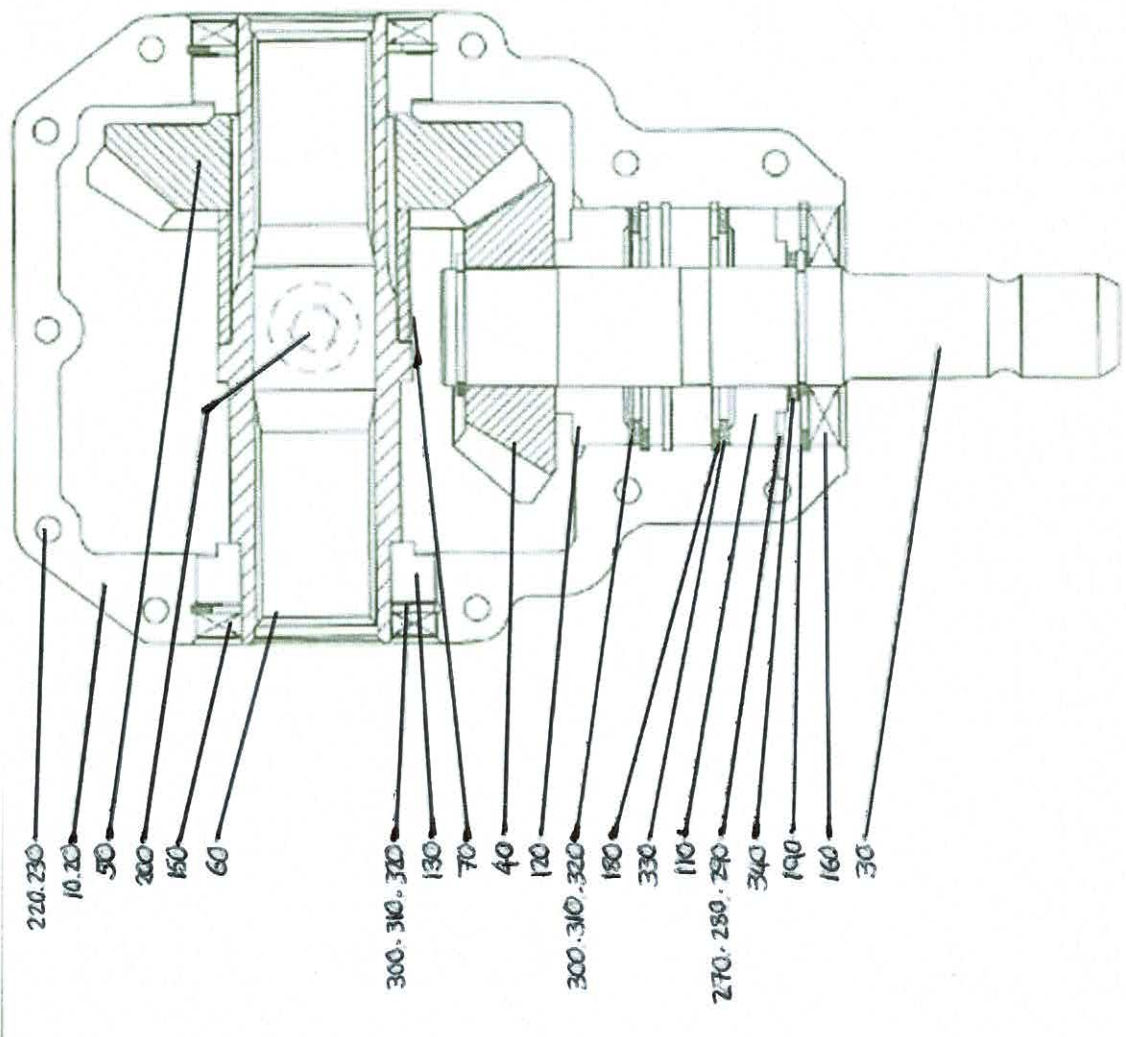
Item	Description	Code	A	B	C	Qty	Kit Code
5a	Camshaft Bush Assembled	74417U01	-	-	-	1	9RL010
5b	Screw M8 x 1.25 L25	96108A0251	-	-	-	4	
5c	Washer Ø8	9810081	-	-	-	4	
5d	Elastic Washer Ø8	9830081	-	-	-	4	
5e	Nut M8 x 1.25	97108A1	-	-	-	4	
6a	Camshaft Bush Ø39	772007	-	-	-	1	(2)9RL001
6b	Casing	7480401	-	-	-	1	
6c	Casing	7480402	-	-	-	1	
6d	Rubber Cover	56A10	-	-	-	2	
3g	Clamp	98E01	-	-	-	2	
3h	Grease Nipple M8 x 1.25	98608A1	-	-	-	1	
5b	Screw M8 x 1.25 L25	96108A0251	-	-	-	6	
5c	Washer Ø8	9810081	-	-	-	6	
5d	Elastic Washer Ø8	9830081	-	-	-	6	
5e	Nut M8 x 1.25	97108A1	-	-	-	6	
7a	Right Camshaft	75P4062...	Ø42	(1) ≤300	-	1	75P4062...
	Right Camshaft	75P4063...	Ø42	(1) >300	-	1	75P4063...
7b	Left Camshaft	75Q4062...	Ø42	(1) ≤300	-	1	75Q4062...
	Left Camshaft	75Q4063...	Ø42	(1) >300	-	1	75Q4063...
8a	Slack Adjuster	7621603	203	-	-	1	9RR0010
8b	Washer Ø26	9812601	-	-	-	1	
8d	Retaining Ring	58508	-	-	-	1	
8e	Spring Ø3.5 L173	738201	-	-	-	1	

(1)-From 200mm to 300mm step 25mm. From 300mm to 1200mm step 50mm.

(2)-For axles produced till 2013.



Cutter Gearbox 5714-A-G150-3B-220300



Centre Gearbox 5713-G135-4B-010021

Proportional Valve.

990231 - Complete Proportional Valve Assembly

990259 - Solenoid Assy - PVEM

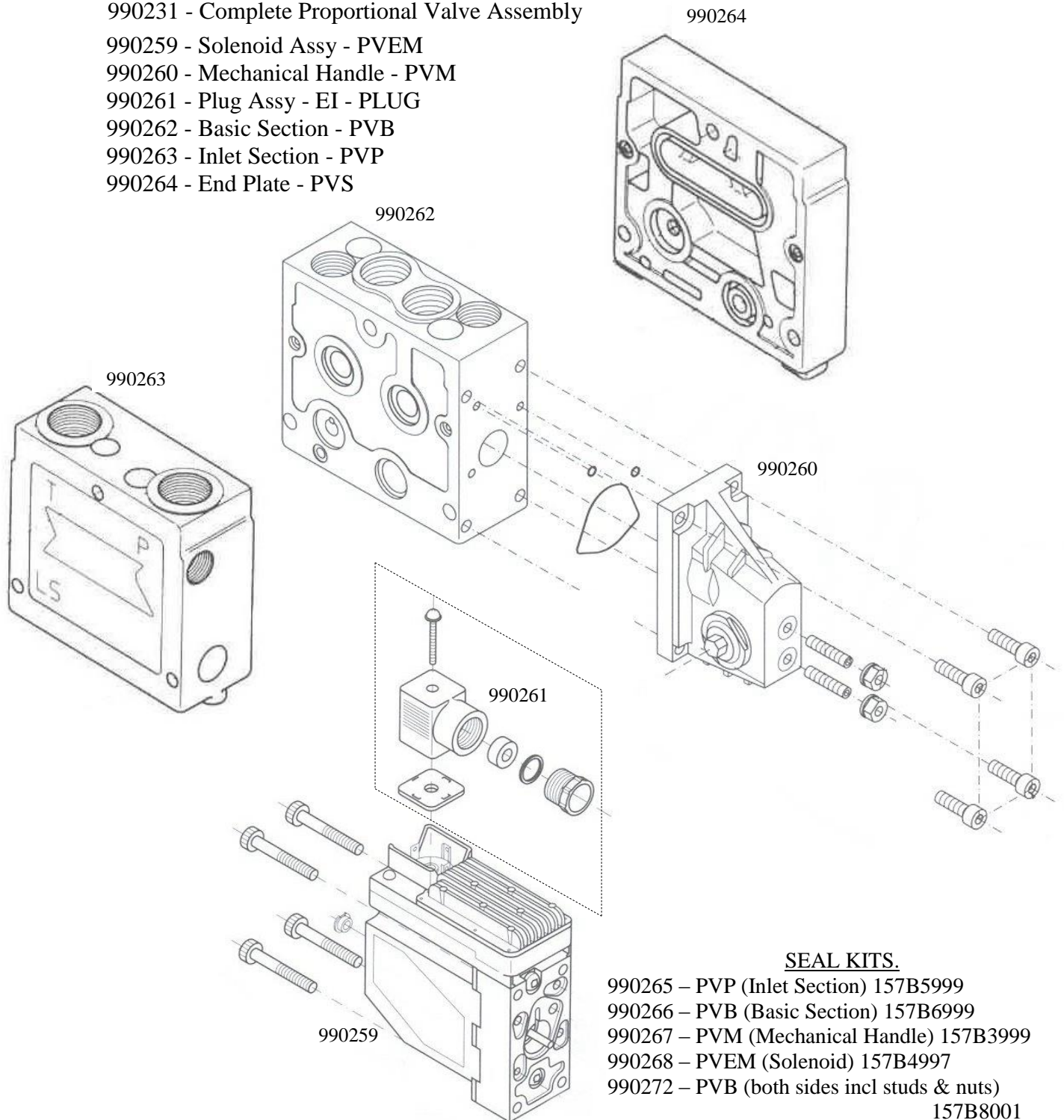
990260 - Mechanical Handle - PVM

990261 - Plug Assy - EI - PLUG

990262 - Basic Section - PVB

990263 - Inlet Section - PVP

990264 - End Plate - PVS



The proportional valve is enclosed in a factory fitted cover, this cover is sealed with a security tab. Removal of this tab will invalidate any warranty of the machine. If a problem occurs contact your dealer or Harry West (Prees) Ltd. direct stating the machines serial number and the number found on the security tab.



INSPECTION REF: _____

THE TILLY TRAILER INSPECTION MAINTENANCE SERVICE CERTIFICATE

This check sheet is designed to help ensure this trailer/rolling stock is correctly maintained.
All safety critical items should always be serviced and maintained by a qualified mechanic.

THE RESPONSIBILITY FOR THE PROVISION OF A SAFE VEHICLE REMAINS WITH THE OWNER

Name:	
Address:	
Post Code:	
Make:	
Chassis No.:	
Tilly Certificate No.:	ISSUED AFTER A FULLY PASSED TILLY INSPECTION.

KEY	
Adjusted	A
Not Applicable	NA
Needs Attention	ATT

Record the result of each check using the appropriate abbreviation in the **RESULT** column below or tick the relevant **TILLY PASS** column.

MECHANIC CHECK LIST	RESULT	TILLY PASS
1. Check TRAILER lights are functioning correctly.		<input type="checkbox"/>
2. Check tyres have legal tread depth, no cuts, bulges, or cord/thread showing.		<input type="checkbox"/>
3. Check towing eye thickness.		<input type="checkbox"/>
4. Check suspended draw bar U bolts & springs if applicable		<input type="checkbox"/>
5. Check drawbar & chassis for cracks.		<input type="checkbox"/>
6. Check Axle springs and U bolts including rocking beams if applicable.		<input type="checkbox"/>
7. Check all pins & bushes.		<input type="checkbox"/>
8. Check the ram seals.		<input type="checkbox"/>
9. Check all hydraulic pipes, connectors & air lines for cuts, chafing & leaks.		<input type="checkbox"/>
10. Check brake shoes and shoe springs for adjustment.		<input type="checkbox"/>
11. Check brake drums for excessive wear, grooves and thickness.		<input type="checkbox"/>
12. Check wheels studs & nuts.		<input type="checkbox"/>
13. Check there are no structural cracks or holes by raising the tipping bed if applicable.		<input type="checkbox"/>
14. Check the tailgate is secure & is not leaking.		<input type="checkbox"/>
15. Check the hand/park brake and cable.		<input type="checkbox"/>
16. Check the appropriate stand is in good working order.		<input type="checkbox"/>
17. Check wheel bearings for wear if necessary clean and re-pack.		<input type="checkbox"/>
18. Check all grease points are made serviceable.		<input type="checkbox"/>

COMMENTS/NOTES
Please make notes on specific items using the relevant key code or any other comments on this trailer inspection.

MECHANICS NAME
COMPANY NAME
DATE

FULL DAILY AND PRE-SEASONAL CHECKS MUST BE CARRIED OUT BY A FULLY TRAINED OPERATOR/OWNER

email: tillypass@gmail.com | www.tillypass.co.uk

White Copy to be retained by Owner | Green Copy to be retained by Mechanical Engineer | Blue Copy to be sent to Tilly Organisation