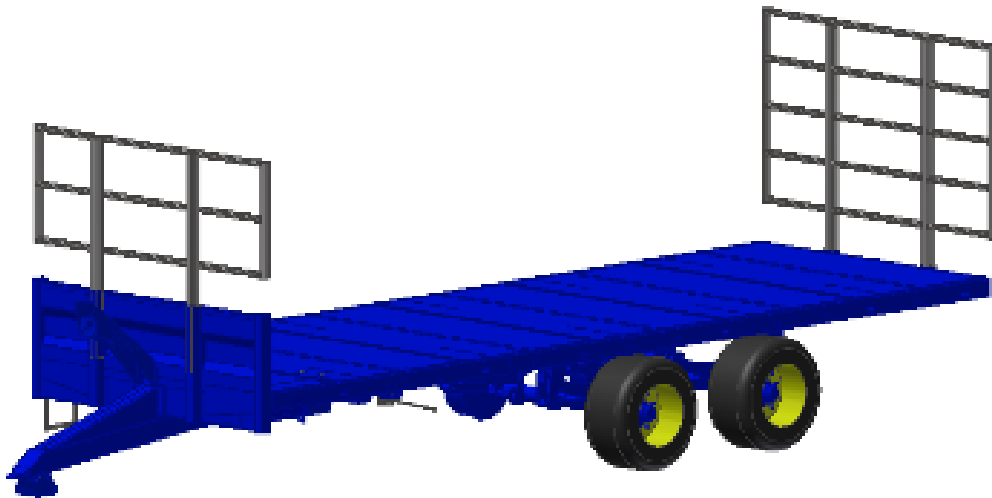




FLATBED TRAILERS



HARRY WEST (PREES) LTD
LOWER HEATH, PREES, WHITCHURCH, SHROPSHIRE
SY13 2BT

TEL: 01948 840 465 FAX: 01948 841 055

WWW.HARRYWEST.CO.UK

EMAIL: SALES@HARRYWEST.CO.UK

22750012-22750017
22770001-22770006

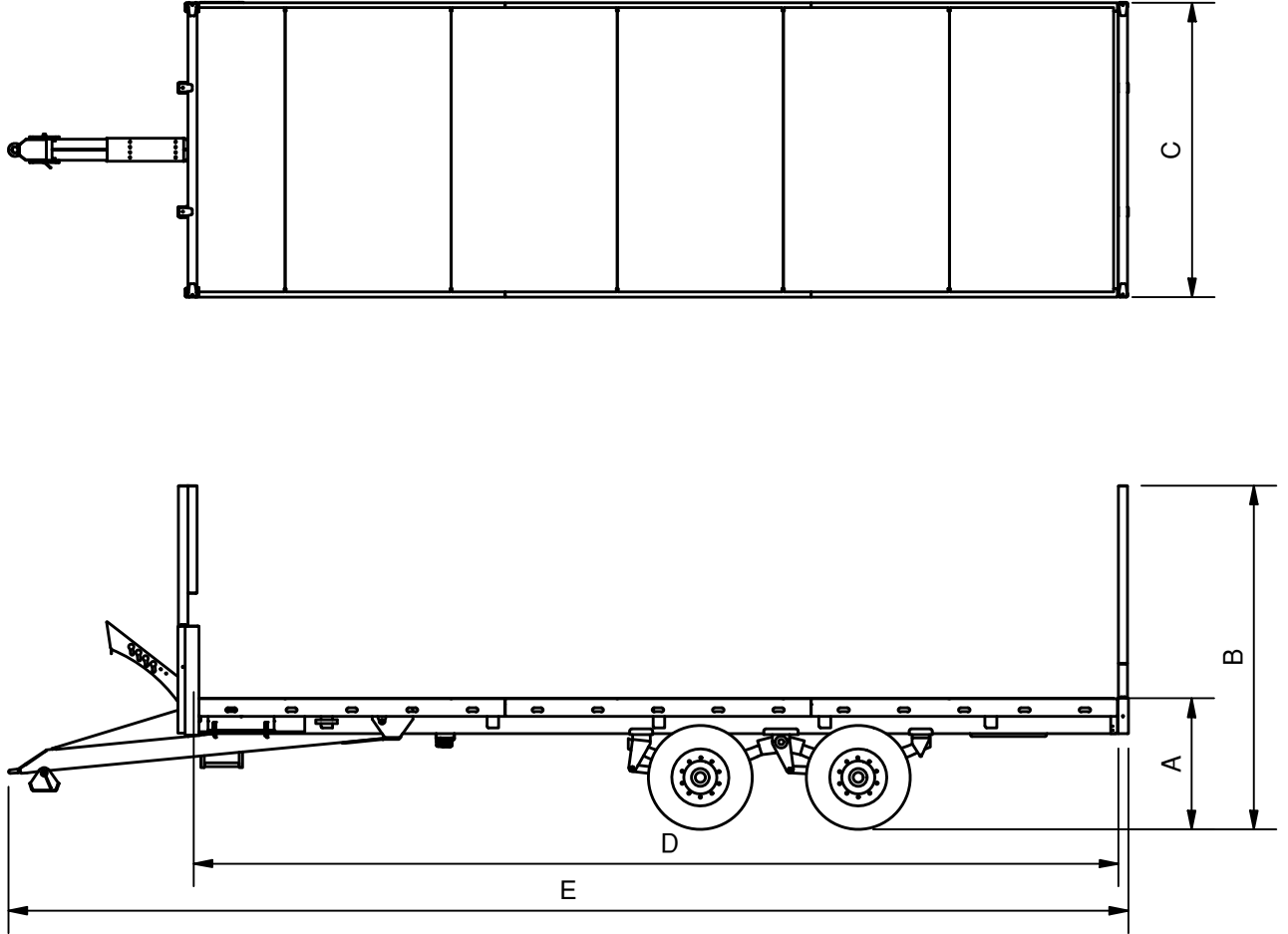
Index

1. Trailer Specification
2. Trailer Specification / Dims
3. Safety Procedures
4. Operating Instructions
5. Maintenance Specifications
6. Maintenance Specifications
7. Blank Page
8. General Spares List
9. General Spares Illustration
10. Hyd Brake Circuit List
11. Hyd Brake Circuit Illustration
12. Blank Page
13. Air Brake Components
14. Axle Breakdown A List
15. Axle Breakdown A Illustration
16. Axle Breakdown B List
17. Axle Breakdown B Illustration
18. Tandem Spring Set List
19. Tandem Spring Set Illustration
20. Light Circuit List
21. Light Circuit Illustration
22. Blank Page
23. Tilley Service Sheet

TRAILER SPECIFICATION.

Standard Trailer (Capacities)	26ft	32ft
Bed Width	2.54 m (8' 4")	
Bed Length	7.974m (26')	9.754m (32'")
Headboard Height (when body level)	1.755m (4' 10")	1.755m (4' 10")
Overall Height (incl ladders)	2.967m (9' 9")	2.967m (9' 9")
Overall Length of Trailer	9.657 m (31' 8")	11.413m (37' 5")
Height of Floor from Ground	1.132m (3' 8½")	1.132m (3' 8½")
Materials Floor	4.5mm over plain checker plate	4.5mm over plain checker plate
Axle Wheel Track	1.9 m (6' 3")	
Axle Beam Size	Ø127 Beam	
Brakes	420 x 180 mm 421E	
Unladen Weight	4600kg	5240kg

Trailer Dimensions



	A	B	C	D	E
26 FT	1.132m (3'8")	2.967m (9'9")	2.54m (8'4")	7.975m (26')	9.657m (31'8")
32 FT	1.132m (3'8")	2.967m (9'9")	2.54m (8'4")	9.775m (32')	11.413m (37'5")

Safety

- Keep all personnel clear of the machine when operating or manoeuvring.
- Do not permit anyone to ride on the machine.
- Do not overload.
- Do not exceed speed rating of tyres, axles and braking system.
- Check that the towing tractor is suitable for the trailer gross weight. A suitable tractor will provide safe braking, stability, and sufficient power for comfortable towing.
- Check that lights are connected and working before using on the road.
- Check hydraulic hoses and air lines for chafing or damage, replace if necessary.
- Check condition of towing eye for signs of wear or damage.
- Check tyre pressure regularly and examine tyres and wheels for damage. Check also that wheel nuts are secure.
- Make a thorough check before using the trailer that all parts are secure.
- Keep hydraulic couplings clean.

Before setting off:

- Ensure all hydraulic connections are made and that services are functioning correctly.
- Ensure all air connections are made and that the brakes are functioning correctly.
- Ensure all electrical connections are made and that lighting system functions correctly.
- With Air Braking system allow air pressure from the towing vehicle to build to the required level.
- Release the manual parking brake lever.
- If only using the hydraulic brakes or when shunting the trailer push the air release valve before moving off.
- It is not necessary to connect both the air and the hydraulic brake systems simultaneously.

Trailer Operating Instructions

Coupling to the Towing Vehicle Air Brake Connections

- Connect ABS electrical connector to towing vehicle ABS socket.
- Connect yellow control line braking connector to the relevant connection on the towing vehicle.
- Connect red air service line braking connector to the relevant connections on the towing vehicle.

Always connect the yellow line first when coupling and disconnect the red line first when uncoupling.

Coupling to the Towing Vehicle Hydraulic Brake Connections

- Connect the hydraulic service line to the correct connection on the towing vehicle.
- Connect emergency brake cable to towing vehicle (only on emergency brake system).
- Couple tractor and trailer on pick-up hook/ring hitch, NOT tractor drawbar.
- Connect body raise and tailgate hydraulics to towing vehicle.
- The body is raised by single acting, multi stage hydraulic cylinders.
- The brakes operate simultaneously with the tractor brakes.
- Hydraulic grain gates are operated with double-acting hydraulic cylinders.
- Before loading the trailer, check that these services function correctly.
- The trailer should be uniformly loaded at all times to maintain stability and correct draw bar loadings.
- Operators should be aware of the widely varying densities of commodities. Trailer cubic capacities relate to cereal crops.
- Tip only on firm level ground. Beware of overhead power cables. If tipping inside building ensure there is adequate height.
- Do not leave silage loaded 'overnight'. Silage and similar crops will settle if left forming a solid mass. Always unload silage while it is still free flowing.

Relieving the Residual Pressure in the Trailer Brake Hose

In normal service, a build-up of pressure may be apparent in the trailer brake hose when attempting to recouple to the tractor after the trailer has been disconnected for some time. The high pressure in the emergency accumulator can cause seepage of fluid the emergency brake valve and into the trailer brake hose, via port C. Manufacturing tolerances are such that it impossible to prevent this happening. After some time, this residual pressure can make recoupling more difficult, and it is advisable to relieve this pressure before attempting to couple up to the tractor again, especially if the trailer has been standing for more than a few days.

To relieve the residual pressure in the hose, rotate the valve spindle to the intermediate position and then pump the pressure-relief button several times. This will transfer fluid from the hose back into the accumulator through a non-return valve, lowering the residual pressure in the hose and allowing it to be recoupled to the tractor more easily.

NOTE:

This is an emergency braking device only, and must not be used as a parking brake.

Maintenance Specifications

Tyres and Wheelnuts

Every 8 hours

- Check nut torque
- Check tyre pressures

Sprung Axles Nuts

After a short period of use (2 hours)

- Check thereafter every 100 hours.

All pivot and hinge pins

- Oil every 200 hours.

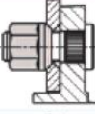
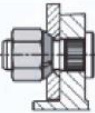
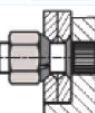
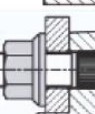
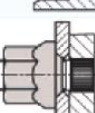
Wheel Bearings

- Grease every 400 hours.
- Adjust wheel bearings if necessary.
- Check and adjust brakes.
- Inspect drawbar ring hitch for wear.

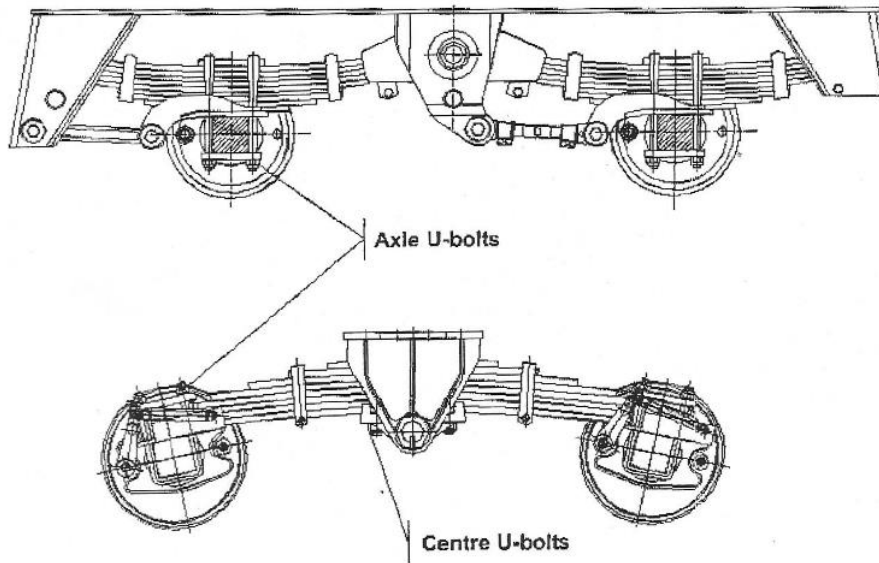
If trailer is laid up for a period of time, lubricate as above, remove drain plugs from inside of body.

Wheels, Axles and Drawbar Torques

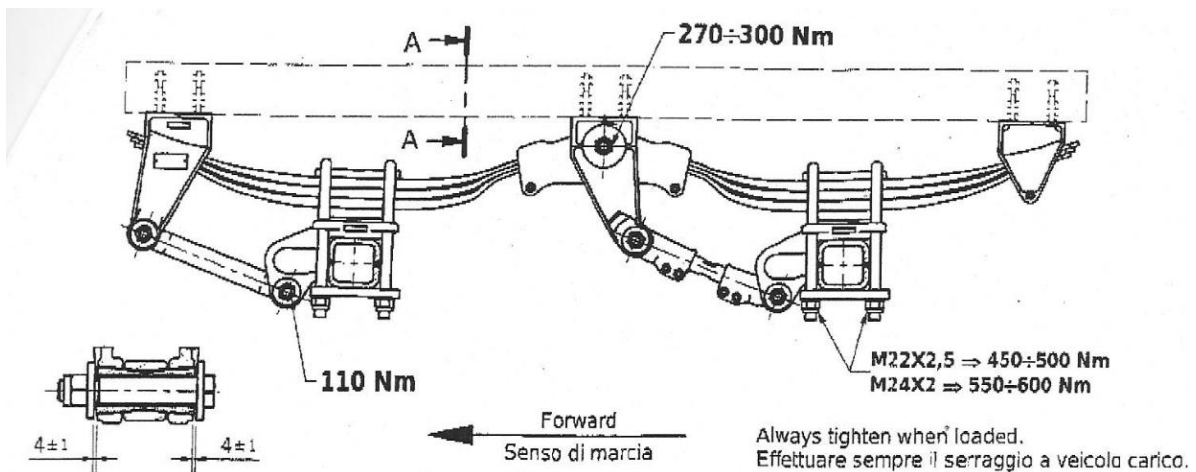
	Wheel	Sprung Axle
26 ft	See Diagram	See Diagram
32 ft	See Diagram	See Diagram

NUT TYPE	Spanner	Wheel stud	Tightening torque	Leverage (*L)	Force (*F)
	mm	mm	Nm	mm	Kg
DIN 	17	M12x1.5	90	300	30
	19	M14x1.5	130	300	40
	24	M18x1.5	270	450	60
Plain nut + washer 	24	M18x1.5	270	450	60
	27	M20x1.5	380	600	60
	30	M22x1.5	510	800	60
"Twin" 	24	M18x1.5	270	450	60
	27	M20x1.5	380	600	60
	30	M22x1.5	510	800	60
"M" 	-	-	-	-	-
	27	M20x1.5	450	800	55
"Bec" 	32	M22x1.5	650	1000	65
	28	M18x1.5	270	450	60
	30	M20x1.5	380	600	60
	32	M22x1.5	510	800	60

Maintenance Specifications



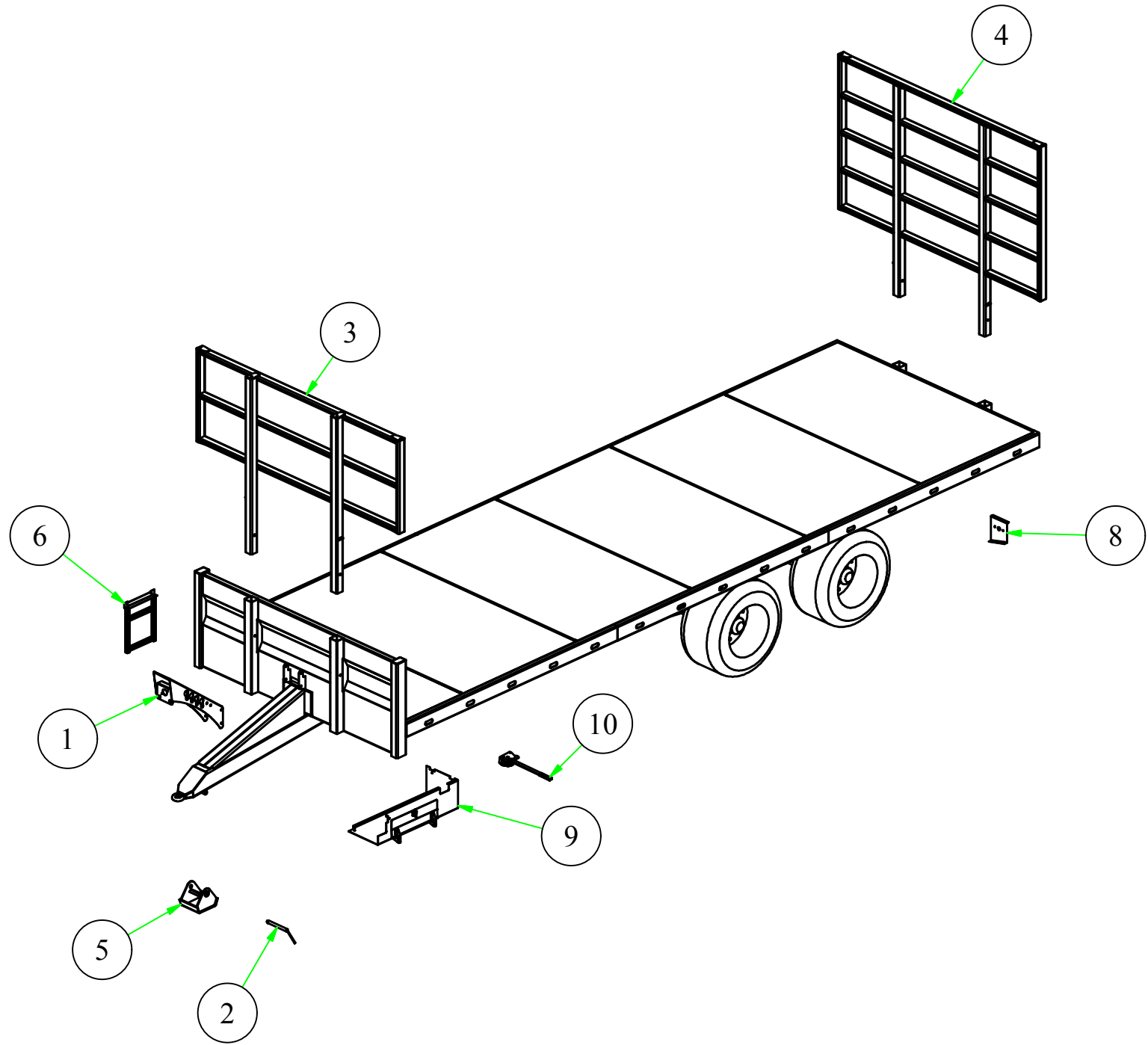
U-bolt	Torque		
mm	mKg	N/M	LB/FT
Ø18	23	225.5	166.4
Ø22	45	440.3	325.5
Ø24	50	490.3	361.7
Ø27	60	588.4	434.0



**BLANK
PAGE**

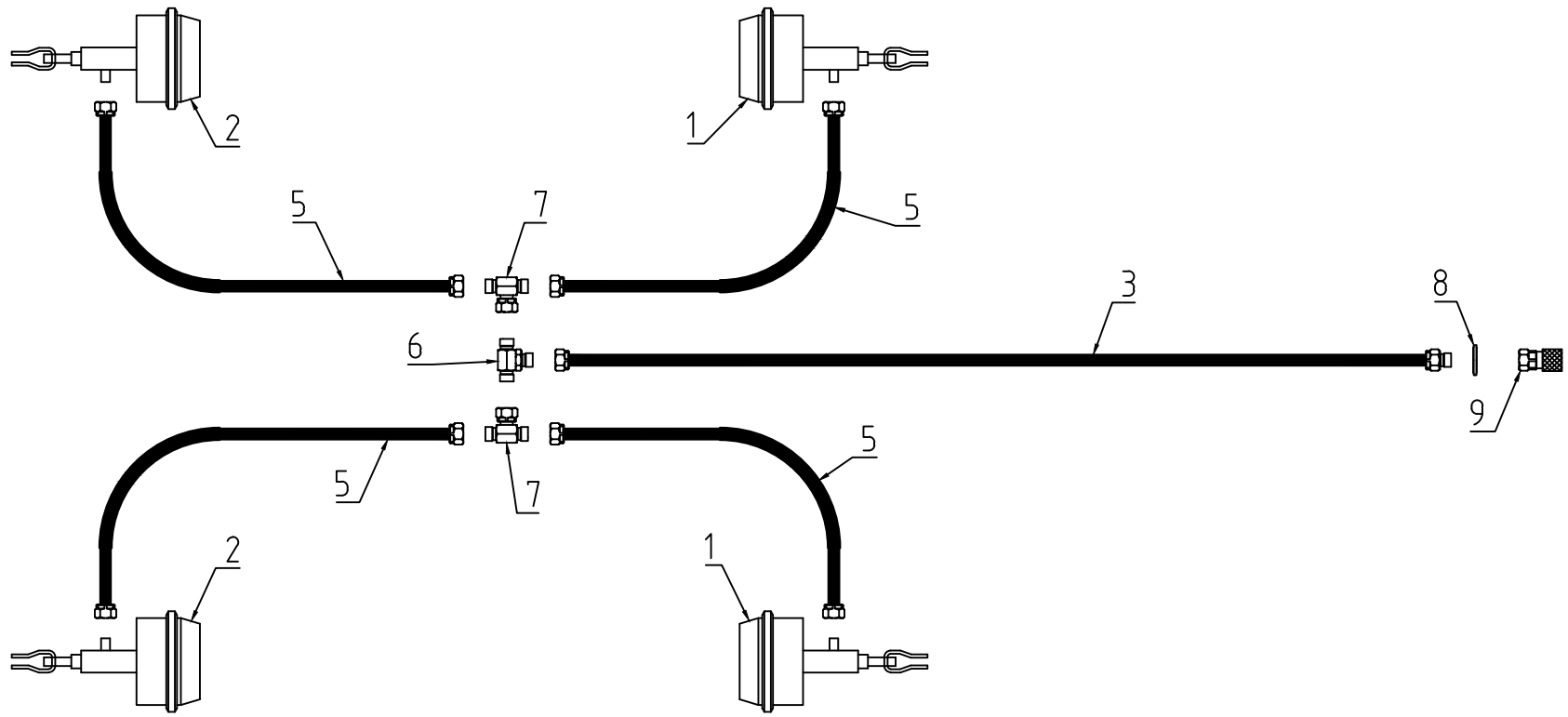
General Spares List

Ref	Description	26ft	32ft
1	Hose Carrier	69121201	69121201
2	Skid Pin	10014401	691210
3	Front Ladder	75109000	75109000
4	Rear Ladder	75110000	75110000
5	Skid	75108000	691209
6	Step	75107000	75107000
7	Offside Rear Light Brkt	75007200	75007200
8	Nearside Rear Light Brkt	75007400	75007400
9	Strap Box	75112000	77118000
10	Handbrake	20054801	20054801

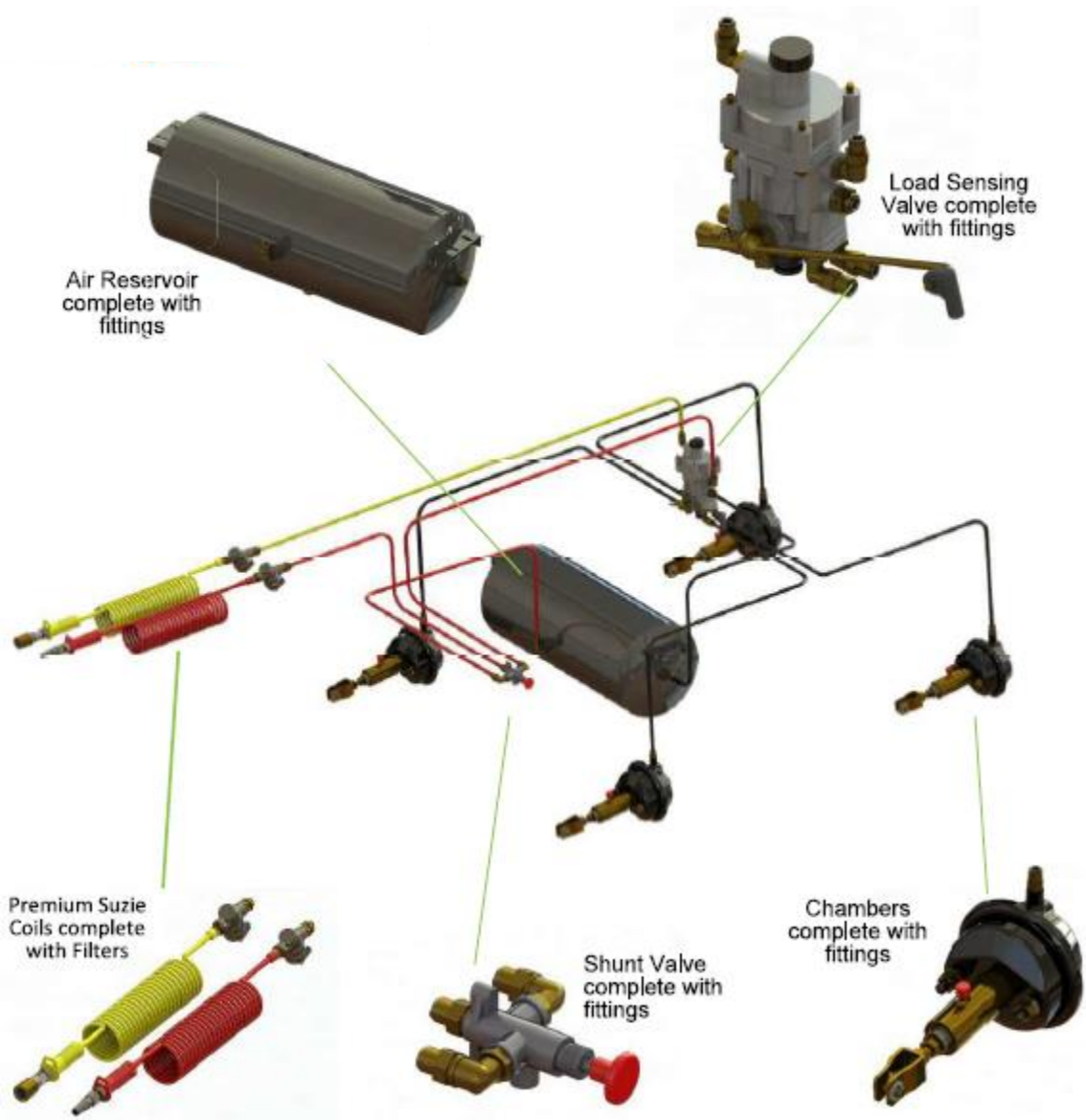


Std Hyd Brake Circuit

Ref	Description	26 ft	32 ft
1	Brake Actuator (slotted clevis)	699007	699007
2	Brake Actuator (std clevis)	699008	699008
3	Tractor – Tee Hose	75900100	77900100
5	Tee – Cyl Hose	75900200	75900200
6	3/8” MMM Tee	990211	990211
7	3/8” MMF Tee	990275	990275
8	½” Dowty Seal	990206	990206
9	½” ISO Quick Release Brake Coupling	990202	990202

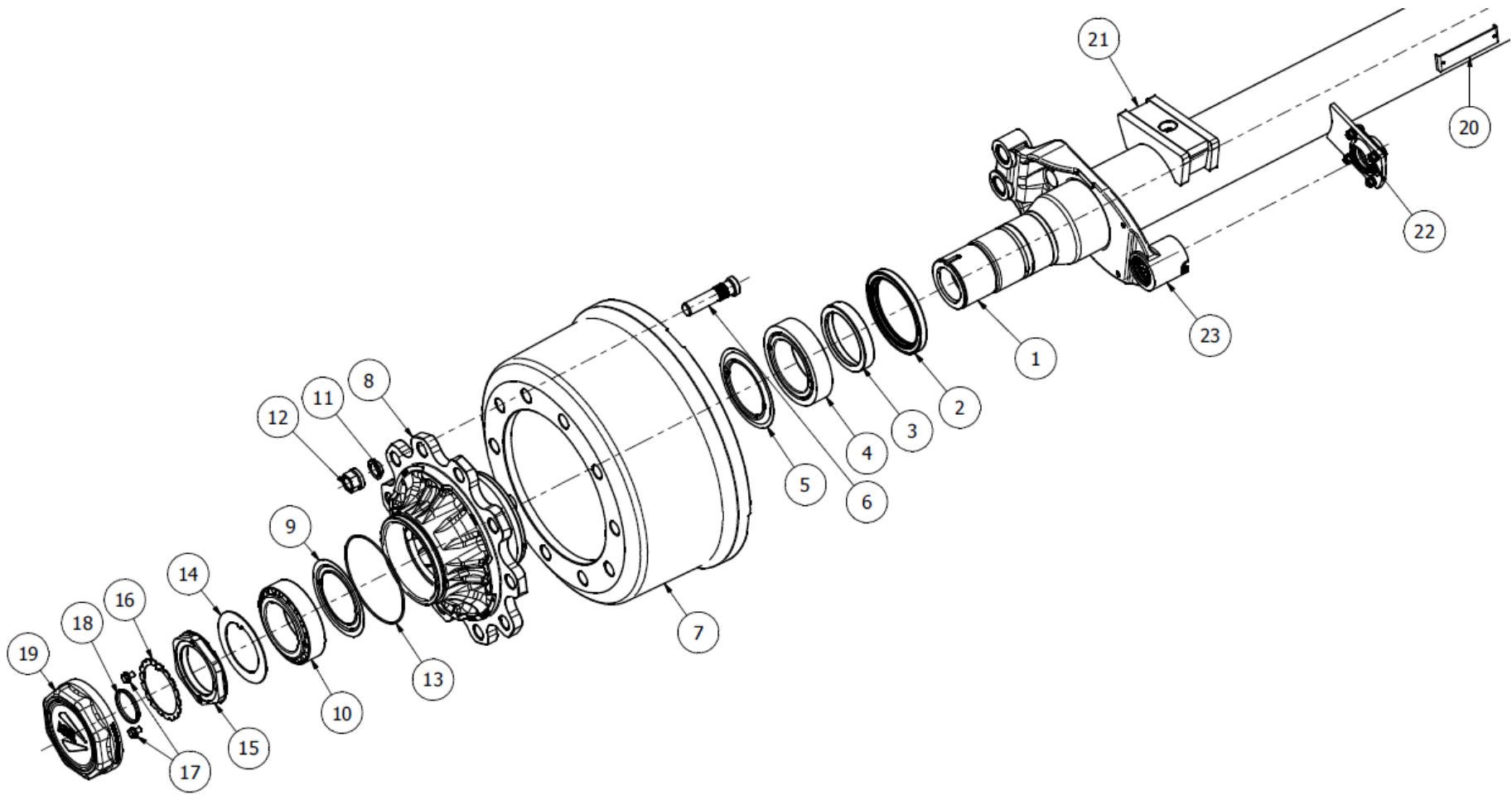


**BLANK
PAGE**

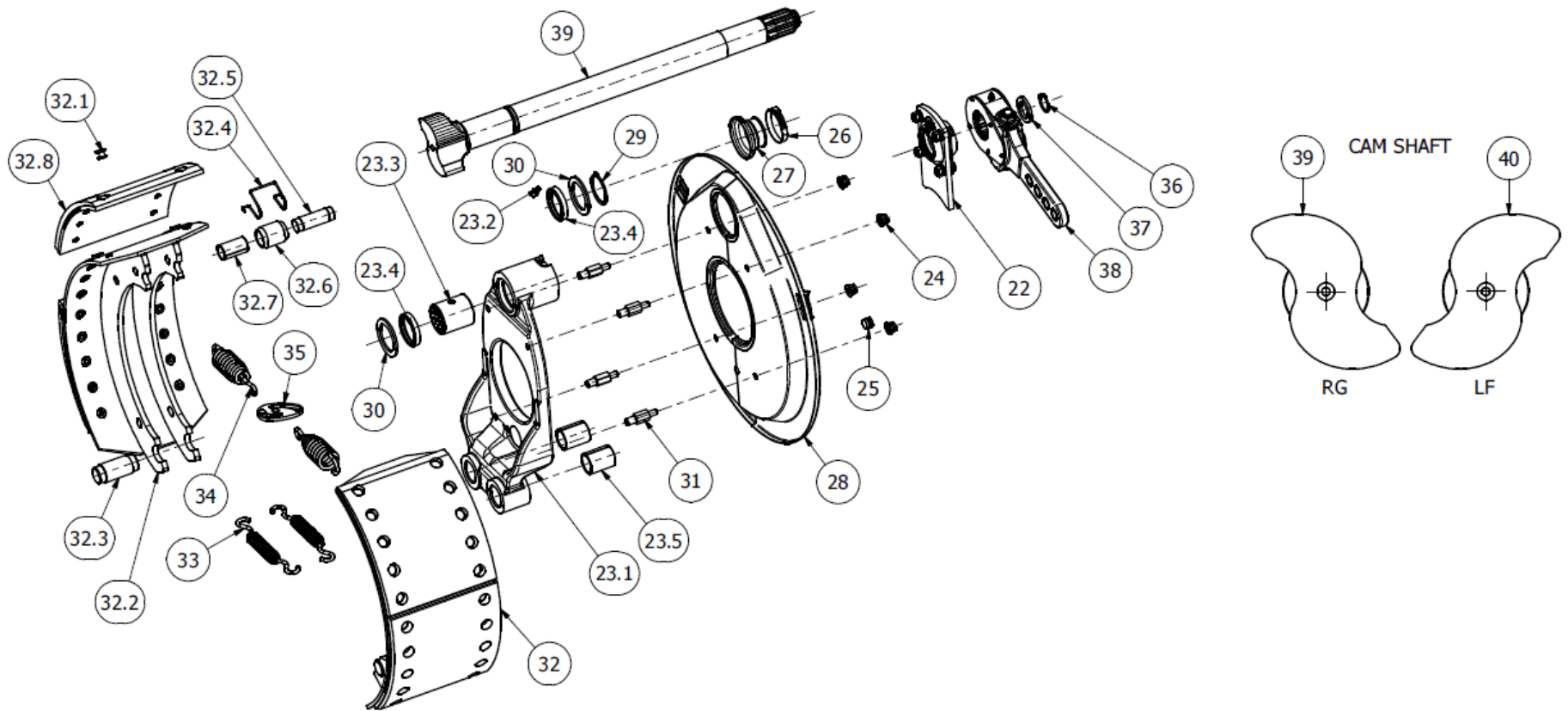


Description	Part No
Load Sensing Valve c/w fittings	75-LSV-F-00
Air Reservoir c/w fittings	75-50LRES-F-00
Premium Suzie Coils c/w Filters	75-SUZ-FIL-00
Shunt Valve c/w fittings	75-SHU-F-00
Brake Actuators c/w fittings	75-HT24-25-F-00

Parts List			
Item	Qty.	Part No.	Description
1	1	681TRAM000-1850	Body Axle R127X16 TRACK0000 1T 090-095 L1=0000 L3=0000
2	2	5491451	Special Grease Seal 119/150 Teknoax
3	2	54S1451	Ring For Periferia 1T Special Grease Seal 5491451
4	2	59133019	33019 095 145 93 Taper Roller Bearing
5	2	5511452	Nilos For Bearing 3301-32019X
6	20	57122B16	Stud M22X1,50 L102 Hub And Drum Twin Wheel
7	2	66LXA1002	Drum 420X180 H10 22 335-280
8	2	61L11T001	Hub H10 22 140-145 280-335
9	2	5511402	Nilos For Bearing 33018
10	2	59133018	33018 090 140 39
11	20	574221	Limes Washer Ø22.5
12	20	57322B1	Stud Nut M22 x 1,50 CH30 German Type
13	2	53115201	Or 3600D152.07 Wire 2.62 Periferia 1T
14	2	57B9004	Lock Washer For M90 Perferia 1T
15	2	57G90B3	Ring Nut M90X1.50 WR120 H16 Periferia 1T
16	2	98809003	Washer M90 For Ring Nut
17	4	96608A0121	Screw HHF M0090X1.25 L012 CS08.8 DIN 6921 Knurled Zinc Plated
18	2	56K0601	Cap TEKNOAX For M90 For Body Axle and Stub Axle
19	2	56314002	Cap 110 M160X2,00 ADR
20	1	94200	Support For Aluminium ID Plate 115X045
21	2	468030	Assembly Support Plate H8 Axle R127
22	2	74417501	Cam Shaft SUPP R127 Round 40-42 D40 L068
23	2	742WCR225	Spyder 42-40 R127 Round Turned D125

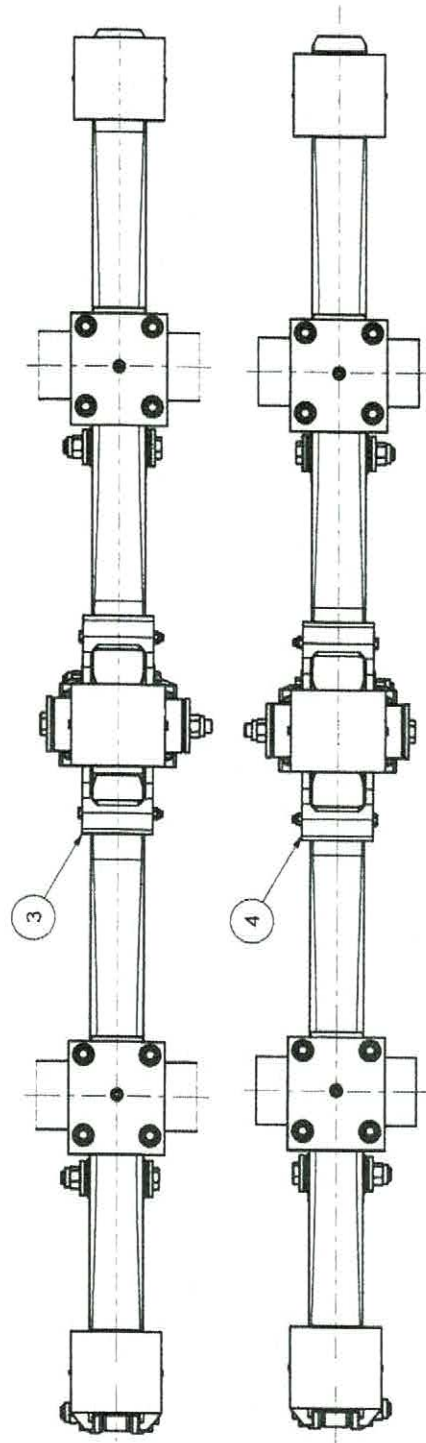
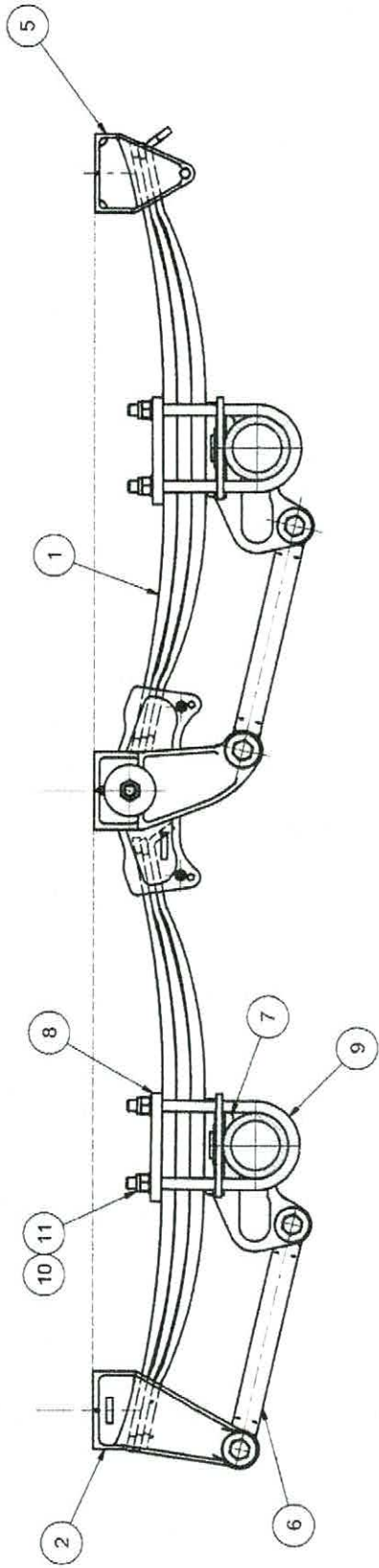


Item	Qty.	Part No.	Description
22	2	74417501	Cam Shaft SUPP R127 Round 40-42 D40 L068
23.1	2	742WCR224	Spyder 42-40 R127 Round Bare Tuned D125
23.2	2	98608A1	Grease Nipple Straight M08X1,25
23.3	2	771007	Bush BMT-3 P424650 With Type 2 Lozange
23.4	4	5490501	Special Grease Seal 041/050 Cam Shaft 412E 4218E
23.5	4	771008	Bush MU-B P2832 L 40
24	8	97708A1	Self-Locking Nut M08x1,25 Thin With Flange ISO 7043 Zinc Plated
25	2	73A01	Rubber Fairlead D15
26	2	98E01	Hose Clamp For Rubber Caps Brake 4218S 4220S
27	2	53A11	Rubber Cap For Cam Shaft Ø40 Brake 412E 414E 4218E 4220E
28	2	743XCR221	Protection Plate 4218E 4220E All Purpose Bare
29	2	58514	Seeger D042 DIN471 For Shaft
30	4	73G01	Washer Brake 412E 4218E
31	8	57708A1	Spacer Spyder 4218E
32	4	732XC04	Brake Shoe 420X10 4218E
32.1	20	96701	Rivet 8 x 15 For Lining DIN7338-3 B Shape
32.2	1	733XC05	Shoe Bare Machin 420X180 4218E
32.3	1	83502801	Pin For Brake Shoe 412E 4218E
32.4	1	738127	Spring For Roll Brake 412E 414E 4218E 4220E 5218E
32.5	1	83302003	Pin For Role Brake 412E 414E 4218E 4220E 5218E
32.6	1	737VC01	Roll For Brake Shoe 412E 4218E
32.7	1	771006	Bush MU-B P2023 L40
32.8	2	734XA01	Lining 420 x 180 Brake 4218S
33	4	738129	Spring Brake 412E 4218E
34	4	738128	Spring Brake 412E 4218E
35	2	736XC02	Spring Extender 412E 414E 4218E 5218S
36	2	58508	Seeger D025 DIN471 For Shaft
37	2	9812601	Washer M26 D026 D039 TK 4.0 UNI 1749 Zinc Plated
38	2	7621603	Slack Adjuster SAE 1,5" Z=10
39	1	75P4063000-0550	CAM Shaft D40 B>300 S Right SAE 1,5" Z=10 412E 4218E
40	1	75Q4063000-0550	CAM Shaft D40 B=300 S LEFT SAE 1,5" Z=10 412E 4218E



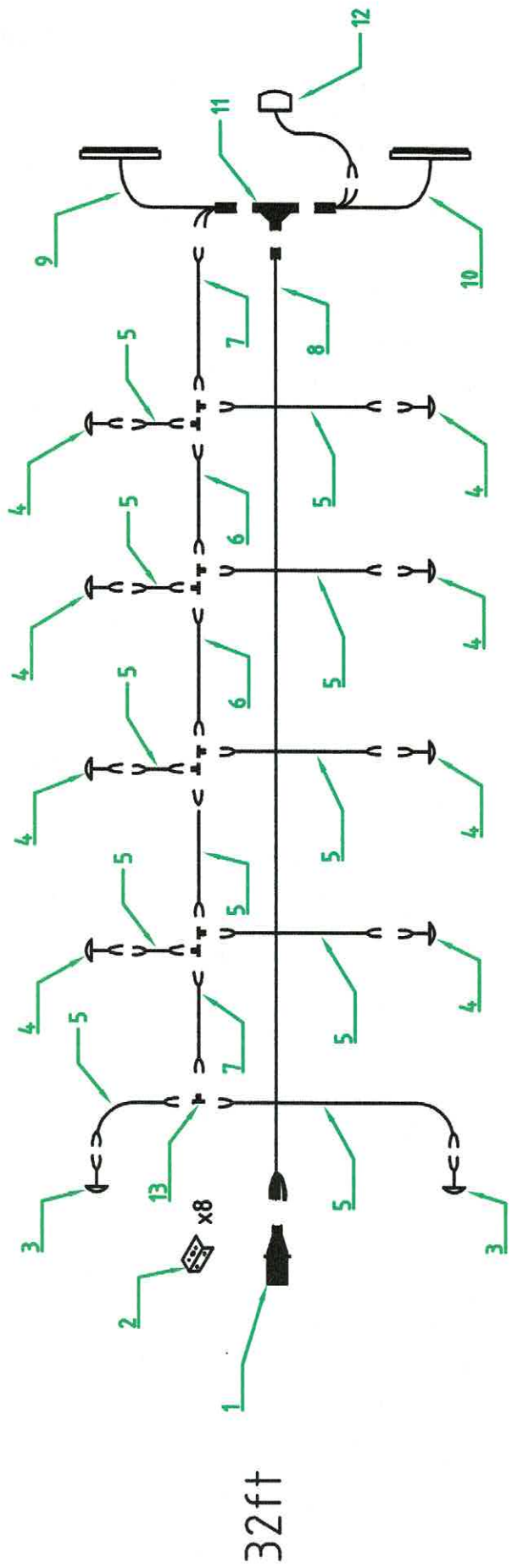
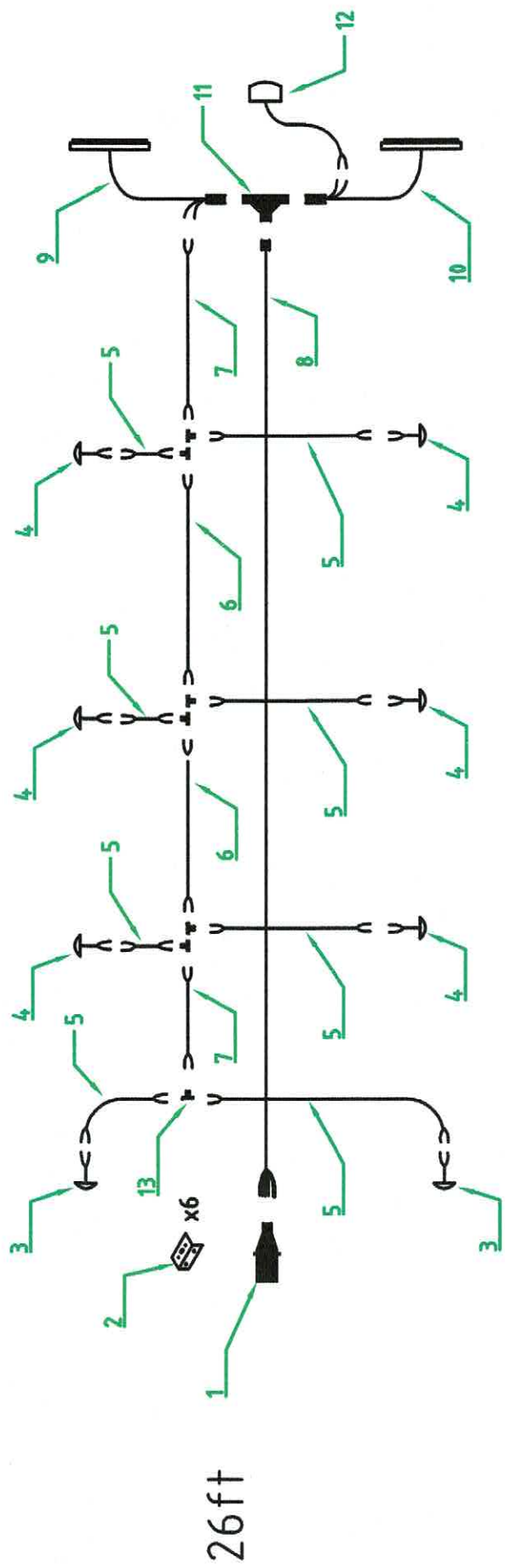
26ft & 32ft Tandem

Part No.	Description	26ft & 32ft	Quantity
1	Spring RP100P131	4171006	4
2	Front Support	939SAA1	2
3	Rocker (R/H)	938ARU01DX	1
4	Rocker (L/H)	938ARU01SX	1
5	Rear Support	938SPA1	2
6	Fixed Rod L450	938ABF450	4
6a	Adjuster Rod	KA9388ABR466	
7	Axle Support	4381R201	4
8	Plate	430R2001	4
9	U Bolt	42122006	8
10	Washer	9812201	16
11	Nut	97422F1	16



Complete Light Circuit

Ref	Description	Part Code
1	7 Pin Plug	75-CSTP700
2	Horizontal Mounting Brkt	75-EU38BKT
3	Front Marker Lamp	75-37WM2P
4	Low Profile Side Marker Lamp	75-EU38AM2P
5	Twin Core Marker Cable – 2m	75-2C200B
6	Twin Core Marker Cable – 3m	75-2C300B
7	Twin Core Marker Cable – 1m	75-2C100B
8	8 Core Main Chassis Cable	75-8P12
9	Low Profile Trailer Lamp - Right	75-EU200-6P1.2R
10	Low Profile Trailer Lamp - Left	75-EU200-6P1.2L
11	7 Pin Connector	75-8PTP
12	Number Plate Lamp	75-41BLM2P
13	Twin Core T- Piece	75-2PTP



**BLANK
PAGE**



INSPECTION REF: _____

THE TILLY TRAILER INSPECTION MAINTENANCE SERVICE CERTIFICATE

This check sheet is designed to help ensure this trailer/rolling stock is correctly maintained.
All safety critical items should always be serviced and maintained by a qualified mechanic.

THE RESPONSIBILITY FOR THE PROVISION OF A SAFE VEHICLE REMAINS WITH THE OWNER

Name:	
Address:	
Post Code:	
Make:	
Chassis No.:	
Tilly Certificate No.:	ISSUED AFTER A FULLY PASSED TILLY INSPECTION.

KEY	
Adjusted	A
Not Applicable	NA
Needs Attention	ATT

Record the result of each check using the appropriate abbreviation in the **RESULT** column below or tick the relevant **TILLY PASS** column.

MECHANIC CHECK LIST	RESULT	TILLY PASS
1. Check TRAILER lights are functioning correctly.		<input type="checkbox"/>
2. Check tyres have legal tread depth, no cuts, bulges, or cord/thread showing.		<input type="checkbox"/>
3. Check towing eye thickness.		<input type="checkbox"/>
4. Check suspended draw bar U bolts & springs if applicable		<input type="checkbox"/>
5. Check drawbar & chassis for cracks.		<input type="checkbox"/>
6. Check Axle springs and U bolts including rocking beams if applicable.		<input type="checkbox"/>
7. Check all pins & bushes.		<input type="checkbox"/>
8. Check the ram seals.		<input type="checkbox"/>
9. Check all hydraulic pipes, connectors & air lines for cuts, chafing & leaks.		<input type="checkbox"/>
10. Check brake shoes and shoe springs for adjustment.		<input type="checkbox"/>
11. Check brake drums for excessive wear, grooves and thickness.		<input type="checkbox"/>
12. Check wheels studs & nuts.		<input type="checkbox"/>
13. Check there are no structural cracks or holes by raising the tipping bed if applicable.		<input type="checkbox"/>
14. Check the tailgate is secure & is not leaking.		<input type="checkbox"/>
15. Check the hand/park brake and cable.		<input type="checkbox"/>
16. Check the appropriate stand is in good working order.		<input type="checkbox"/>
17. Check wheel bearings for wear if necessary clean and re-pack.		<input type="checkbox"/>
18. Check all grease points are made serviceable.		<input type="checkbox"/>

COMMENTS/NOTES
Please make notes on specific items using the relevant key code or any other comments on this trailer inspection.

MECHANICS NAME
COMPANY NAME
DATE

FULL DAILY AND PRE-SEASONAL CHECKS MUST BE CARRIED OUT BY A FULLY TRAINED OPERATOR/OWNER

email: tillypass@gmail.com | www.tillypass.co.uk

White Copy to be retained by Owner | Green Copy to be retained by Mechanical Engineer | Blue Copy to be sent to Tilly Organisation